

Midpoint P7/P8 | Suspended



DE LED-Strahler für Pendelmontage. Direktstrahlend. Konverter in Leuchtenkörper integriert, wahlweise einfach schaltbar oder stufenlos dimmbar (DALI). Gehäuse aus Aluminium in weiß, silber, schwarz oder champagnerfarben lackiert. Weitere Oberflächenoptionen siehe Lightnet Surface Collection oder RAL nach Wahl. LED Engine wahlweise XICATO ARTIST für höchste Lichtqualität mit bester Farbwiedergabe und 5 Jahre Garantie für Farbkonstanz (MacAdam \leq 3) oder ECO für höchste Energieeffizienz bei optimalem Preis-Leistungsverhältnis und CRI $>$ 90. Farbtemperaturen 2700K, 3000K oder 4000K. Austauschbare Linsen-Reflektoroptiken mit sphärischer Facettenoptik. Ausstrahlwinkel: 10° (Spot), 20° (Medium), 35° (Flood) oder 50° (Wide Flood). Reflektorring in verschiedenen Farbausführungen erhältlich. Standardmäßig klare Abdeckung. Optional zusätzliche Filter oder Wabenraster. Zuleitungskabel wahlweise transparent, rot oder schwarz.

EN LED spotlight for pendant mounting. Direct only light distribution. Driver integrated into luminaire body, optionally switchable or dimmable (DALI). Housing made of white, silver, black or champagne coated aluminum. Further surface options see Lightnet-Surface-Collection or RAL of your choice. LED Engine with XICATO ARTIST for highest light quality and colour rendering, including 5-year warranty for colour consistency (MacAdams 3) or ECO for highest energy efficiency with optimal price-performance ratio and CRI $>$ 90. Colour temperature 2700K, 3000K or 4000K. Replaceable lens reflector optic with spherical faceted optic. Beam angle: 10° (Spot), 20° (Medium), 35° (Flood) or 50° (Wide Flood). Reflector ring available in different colour versions. Standard clear cover. Optional additional filters or honeycomb louvre. Option of transparent, red or black power supply cable.

PP7 BSE-927FM-BKR

| | |
|--------------------|----------------------------------------------------------------------------------------------------------------------------------------------------------------------|
| Product Family | P: Midpoint |
| Type | P7: Direct [Tube: 215mm], P8: Direct [Tube: 500mm] |
| Beam Angle | A: Spot 10°, B: Medium 20°, C: Flood 35°, D: Wide Flood 50° |
| Surface Finish | W: Snow White, V: Ivory White, S: Radiant Silver, B: Jet Black, H: Anodic Champagne |
| Control Gear | E: On/Off, L: DALI, H: Touch-Dim |
| Colour Rendering | 9: CRI>90 |
| Colour Temperature | 27: 2700K, 30: 3000K, 40: 4000K |
| Led-Engine | F: Eco [Ra> 90], A: Artist [Ra> 97, Xicato] |
| Power | E: Low Power M: Medium Power |
| Optic Ring | W: Snow White, V: Ivory White, S: Radiant Silver, B: Jet Black, H: Anodic Champagne, G: Satin Gold, K: Satin Copper |
| Cover | K: Clear Cover [Standard], P: Prismatic Lens, H: Honeycomb Louvre |
| Cable Colour | T: Transparent, R: Red, B: Black |
| On Request | Optic Removal Tool for clear cover |



Spot 10° Led Engine Eco, Medium Power

| Mounting Height | Illuminance [Lux] center/side | Beam Diameter |
|-----------------|-------------------------------|---------------|
| 1 m | 25250/12700 | 0.24 m |
| 2 m | 6312/3175 | 0.48 m |
| 3 m | 2806/1411 | 0.72 m |
| 4 m | 1578/794 | 0.95 m |

| LED Engine | 2700K | 3000K | 4000K |
|---------------|---------|---------|---------|
| Eco Low | | | |
| Power [19W] | 1230 lm | 1350 lm | 1440 lm |
| Eco Medium | | | |
| Power [31W] | 1660 lm | 1860 lm | 2020 lm |
| Artist Low | | | |
| Power [19W] | 1040 lm | 1090 lm | 1190 lm |
| Artist Medium | | | |
| Power [31W] | 1400 lm | 1480 lm | 1560 lm |

Medium 20° Led Engine Eco, Medium Power

| Mounting Height | Illuminance [Lux] center/side | Beam Diameter |
|-----------------|-------------------------------|---------------|
| 1 m | 17447/8455 | 0.32 m |
| 2 m | 4362/2114 | 0.64 m |
| 3 m | 1939/939 | 0.96 m |
| 4 m | 1090/528 | 1.30 m |

| LED Engine | 2700K | 3000K | 4000K |
|---------------|---------|---------|---------|
| Eco Low | | | |
| Power [19W] | 1580 lm | 1740 lm | 1850 lm |
| Eco Medium | | | |
| Power [31W] | 2360 lm | 2640 lm | 2870 lm |
| Artist Low | | | |
| Power [19W] | 1330 lm | 1390 lm | 1510 lm |
| Artist Medium | | | |
| Power [31W] | 1980 lm | 2110 lm | 2220 lm |

Flood 35° Led Engine Eco, Medium Power

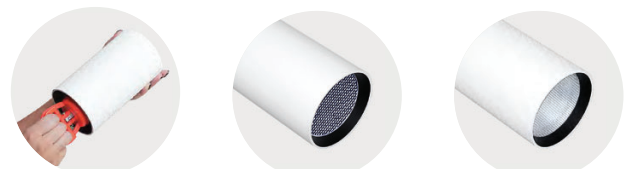
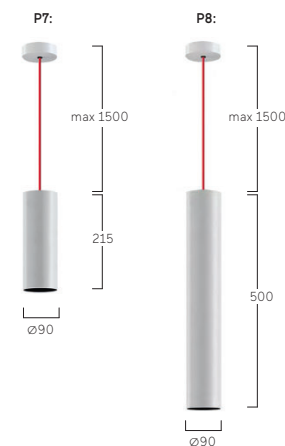
| Mounting Height | Illuminance [Lux] center/side | Beam Diameter |
|-----------------|-------------------------------|---------------|
| 1 m | 6251/2731 | 0.63 m |
| 2 m | 1563/683 | 1.30 m |
| 3 m | 695/303 | 1.90 m |
| 4 m | 391/171 | 2.50 m |

| LED Engine | 2700K | 3000K | 4000K |
|---------------|---------|---------|---------|
| Eco Low | | | |
| Power [19W] | 1530 lm | 1680 lm | 1790 lm |
| Eco Medium | | | |
| Power [31W] | 2280 lm | 2550 lm | 2780 lm |
| Artist Low | | | |
| Power [19W] | 1290 lm | 1350 lm | 1470 lm |
| Artist Medium | | | |
| Power [31W] | 1930 lm | 2060 lm | 2160 lm |

Wide Flood 50° Led Engine Eco, Medium Power

| Mounting Height | Illuminance [Lux] center/side | Beam Diameter |
|-----------------|-------------------------------|---------------|
| 1 m | 3550/1319 | 0.94 m |
| 2 m | 887/330 | 1.90 m |
| 3 m | 394/147 | 2.80 m |
| 4 m | 222/82 | 3.80 m |

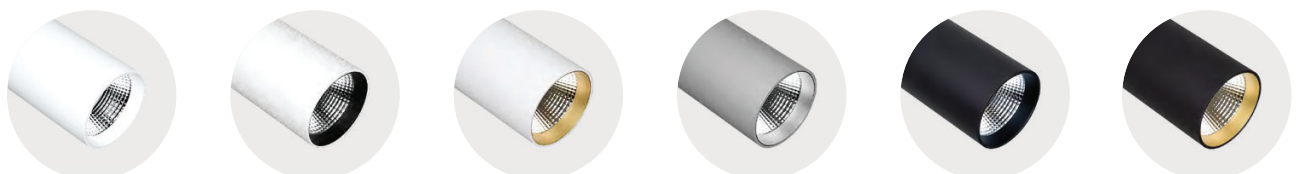
| LED Engine | 2700K | 3000K | 4000K |
|---------------|---------|---------|---------|
| Eco Low | | | |
| Power [19W] | 1440 lm | 1580 lm | 1680 lm |
| Eco Medium | | | |
| Power [31W] | 2230 lm | 2490 lm | 2710 lm |
| Artist Low | | | |
| Power [19W] | 1250 lm | 1310 lm | 1430 lm |
| Artist Medium | | | |
| Power [31W] | 1910 lm | 2040 lm | 2140 lm |



Optic Removal Tool for clear cover

Honeycomb Louvre

Prismatic Lens



W Snow White
W Snow White

W Snow White
B Jet Black

W Snow White
G Satin Gold

S Radiant Silver
S Radiant Silver

B Jet Black
B Jet Black

B Jet Black
G Satin Gold