

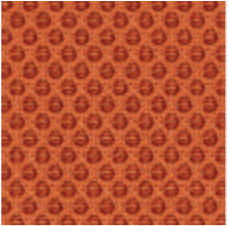
RR
Gabriel, Runner



RR01_Runner 60999

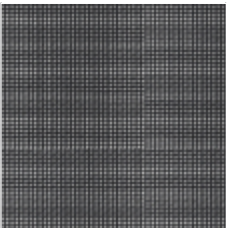


RR12_Runner 66140



RR06_Runner 63034

RP
Plastitex, Net Medium

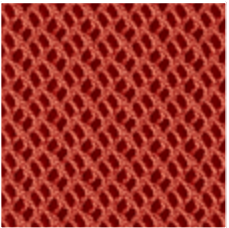


RP10

RY
Gabriel, Rhythm

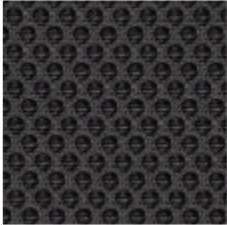


RY01_Rhythm 60999

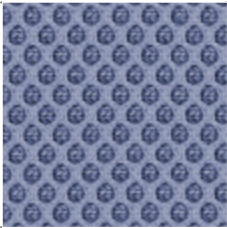


RY12_Rhythm 63067

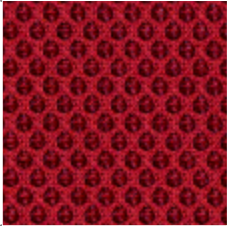
Designer Inger Mosholt Nielsen
100% PL
70.000 Martindale



RR02_Runner 60025



RR09_Runner 65078



RR07_Runner 64089

70% PVC, 30% PL
100.000 Martindale

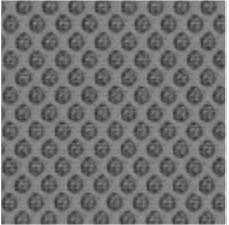


RP11

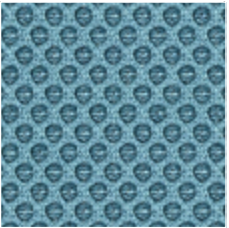
100% PL Fr
100.000 Martindale



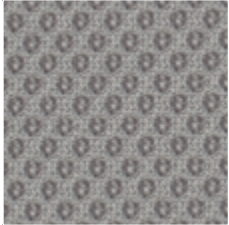
RY02_Rhythm 60025



RR03_Runner 60011



RR15_Runner 66063



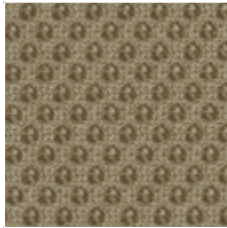
RR14_Runner 60165



RR05_Runner 68056



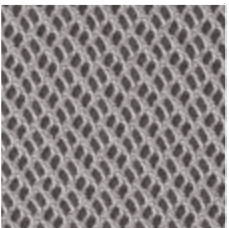
RR08_Runner 66064



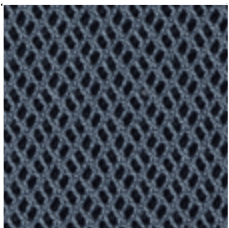
RR13_Runner 61110



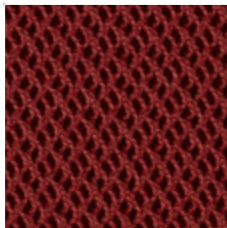
RP20



RY03_Rhythm 60165



RY09_Rhythm 66152



RY06_Rhythm 63068

	Composizione	Composition
PA	Poliammidica	Polyamide
PL	Poliestere	Polyester
PL Fr	Poliestere ignifugo	Flame retardant polyester
Tr Cs	Trevira CS	Trevira CS
W	Lana	Wool
WV	Lana Vergine	Virgin Wool

	Caratteristiche	Features
	Ignifugo	Flame retardant
	Riciclabile	Recyclable
	Riciclato	Recycled

	Certificazioni	Certifications
	Non contiene metalli pesanti	No heavy metals
	EU Ecolabel è un marchio europeo che certifica il ridotto impatto ambientale del prodotto	EU Ecolabel is a European brand that certifies the reduced environmental impact of the product
	GREENGUARD Certification è un marchio europeo che certifica il basso livello di emissioni chimiche	GREENGUARD Certification is a brand that certifies the low level of chemical emissions
	L'etichetta Oeko-Tex® STANDARD 100 garantisce che si può essere certi che ogni componente di questo articolo è stato testato per le sostanze nocive e che l'articolo è quindi innocuo in termini ecologici umani	The Oeko-Tex® STANDARD 100 label guarantees that every component of the article, has been tested for harmful substances and that the article therefore is harmless in human ecological terms

Note sui rivestimenti — Per ragioni tecniche non è possibile garantire lo stesso tono di colore tra un lotto di produzione ed un altro. Leggere differenze, con una tolleranza del ±5% devono intendersi come normali e non possono dar adito a reclami o alla risoluzione del contratto. Sitland spa si riserva il diritto di apportare modifiche alle finiture contenute nella presente cartella senza preavviso alcuno. Ulteriori informazioni sulle caratteristiche tecniche di ogni singolo rivestimento sono disponibili nel sito www.sitland.com

Pulizia e manutenzione – Per la manutenzione dei tessuti consigliamo di passare con frequenza almeno mensile la superficie, utilizzando un aspirapolvere. In caso di unto, utilizzare solamente un panno leggermente umido e sapone neutro, non strofinare e lasciare asciugare naturalmente.

Note on upholstery – For technical reasons, batch to batch variations in shade may occur. Slight differences, within a tolerance of ±5%, are to be considered as normal and acceptable and they cannot give rise to claims or to a breach of contract. Sitland spa reserves the right to make modifications to the finishes contained in the present folder without any prior communication. Further information on the technical characteristics of each individual upholstery is available on the website www.sitland.com

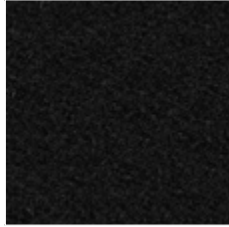
Cleaning and maintenance – For the fabrics maintenance, we suggest you to regularly vacuum clean. Stains can be cleaned with a soft damp cloth and mild soap; do not rub and allow to dry naturally.

Tessuti e reti / Fabrics and meshes / Gewebe und Maschen / Tissus et Mailles / Tejidos y Mallas

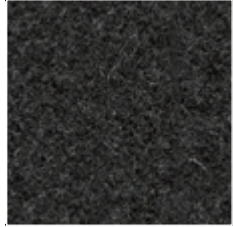
Tessuti e reti / Fabrics and meshes / Gewebe und Maschen / Tissus et Mailles / Tejidos y Mallas

SY
Camira, Synergy

95% WV, 5% PA
100.000 Martindale



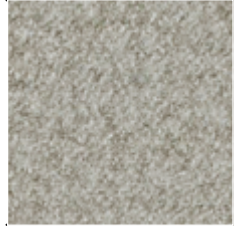
SY01_Synergy LDS27



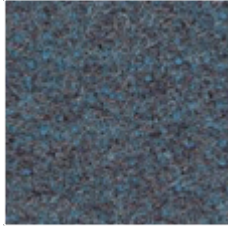
SY05_Synergy LDS17



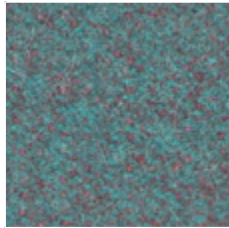
SY04_Synergy LDS35



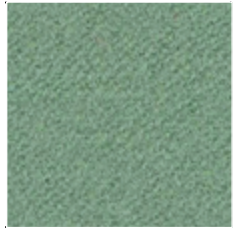
SY02_Synergy LDS08



SY07_Synergy LDS58



SY09_Synergy LDS56



SY40_Synergy LDS54



SY16_Synergy LDS32



SY46_Synergy LDS37



SY10_Synergy LDS83



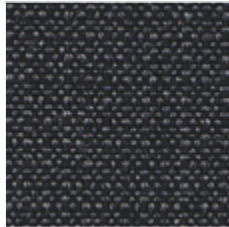
SY13_Synergy LDS84



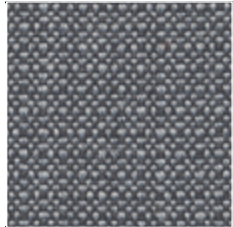
SY32_Synergy LDS64

CS
Gabriel, Crisp

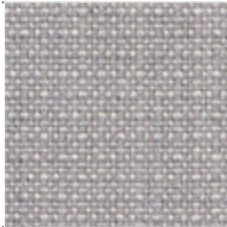
Designer Mette Krebs Petersen
93% W of New Zealand, 7% PA
200.000 Martindale



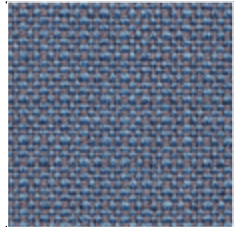
CS38_Crisp 04013



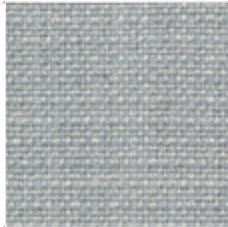
CS40_Crisp 04022



CS08_Crisp 04033



CS04_Crisp 04604



CS03_Crisp 04034



CS35_Crisp 04752



CS23_Crisp 04603



CS05_Crisp 04115



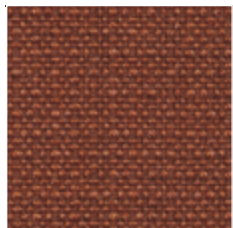
CS07_Crisp 04032



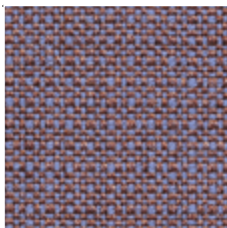
CS37_Crisp 04771



CS27_Crisp 04711



CS15_Crisp 04301



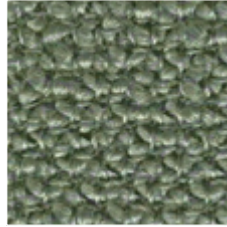
CS26_Crisp 04702

YO
Camira, Yoredale

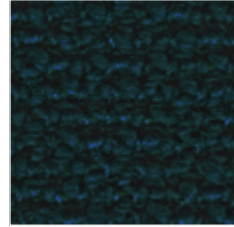
95% W, 3% PL, 2% PA
50.000 Martindale



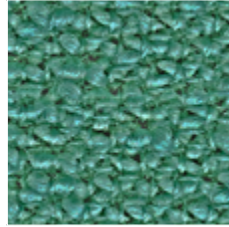
YO01_Yoredale UDA25



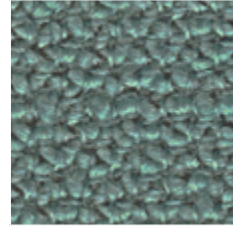
YO02_Yoredale UDA04



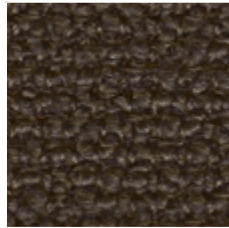
YO09_Yoredale UDA17



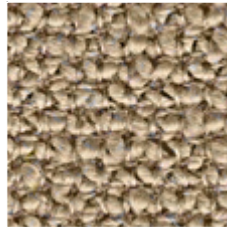
YO11_Yoredale UDA23



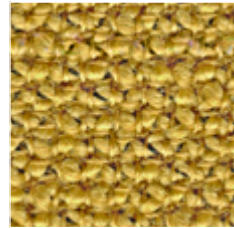
YO10_Yoredale UDA22



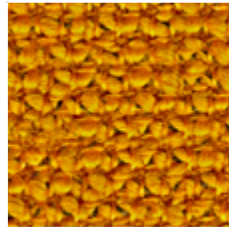
YO04_Yoredale UDA06



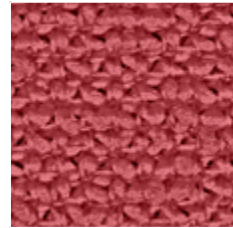
YO03_Yoredale UDA02



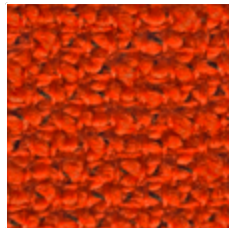
YO07_Yoredale UDA05



YO08_Yoredale UDA16



YO12_Yoredale UDA24



YO06_Yoredale UDA12



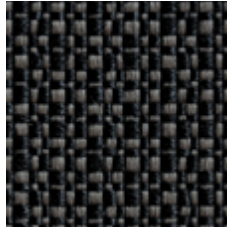
YO05_Yoredale UDA14

IS,
Rada, Iris

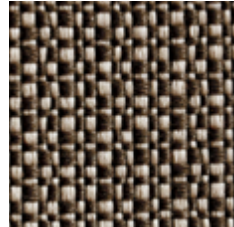
100% recycled PET
100.000 Martindale



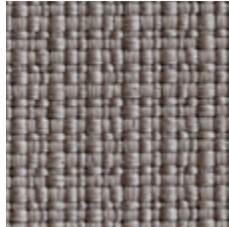
IS31_Iris 200



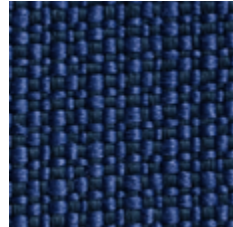
IS48_Iris 605



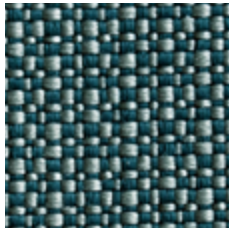
IS46_Iris 603



IS45_Iris 601



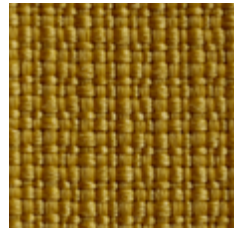
IS54_Iris 707



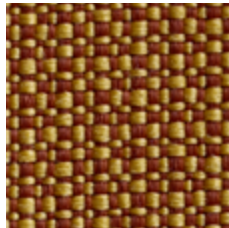
IS51_Iris 703



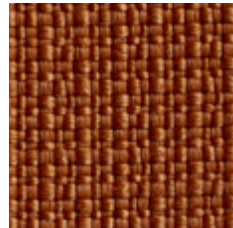
IS56_Iris 801



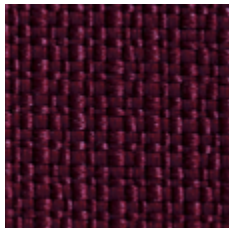
IS44_Iris 501



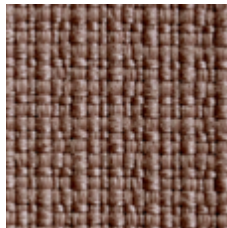
IS38_Iris 308



IS37_Iris 307



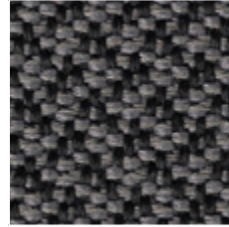
IS33_Iris 303



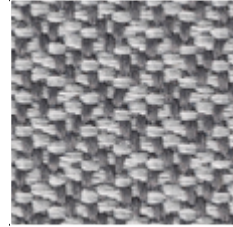
IS30_Iris 901

DF / DS
Vescom, Deans

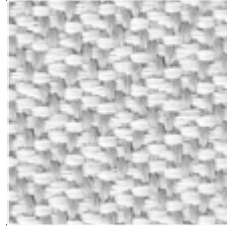
100% PL Fr
110.000 Martindale



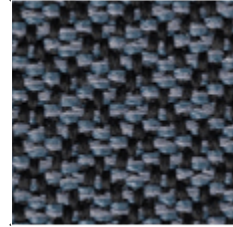
DF01_Deans 7048.12



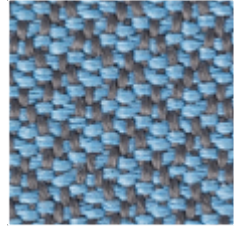
DF02_Deans 7048.03



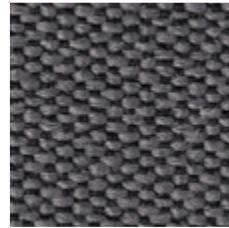
DF03_Deans 7048.09



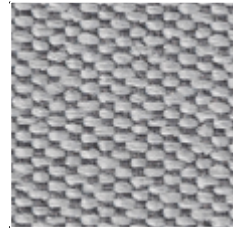
DF04_Deans 7048.08



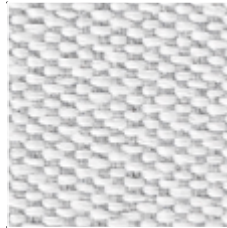
DF05_Deans 7048.10



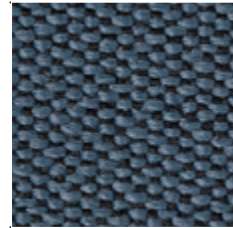
DS01_Deans 7048.12



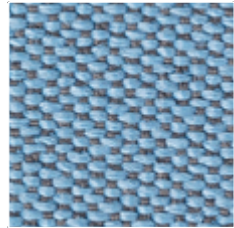
DS02_Deans 7048.03



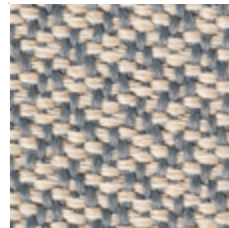
DS03_Deans 7048.09



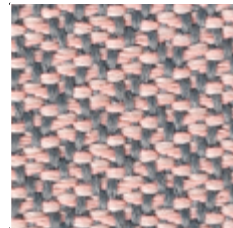
DS04_Deans 7048.08



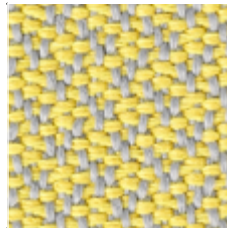
DS05_Deans 7048.10



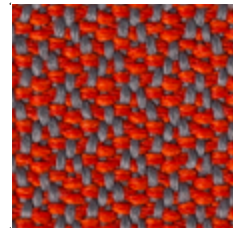
DF11_Deans 7048.01



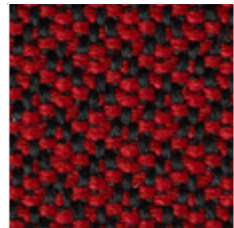
DF09_Deans 7048.14



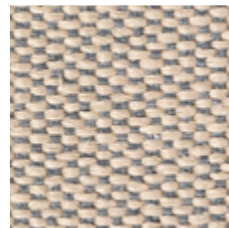
DF10_Deans 7048.04



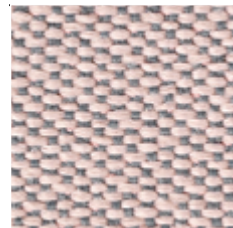
DF07_Deans 7048.13



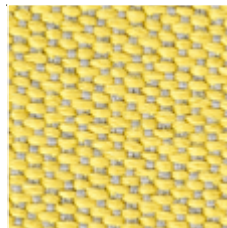
DF06_Deans 7048.15



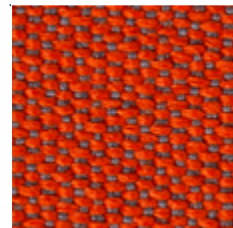
DS11_Deans 7048.01



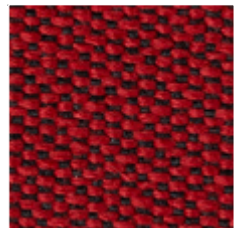
DS09_Deans 7048.14



DS10_Deans 7048.04



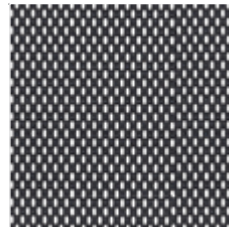
DS07_Deans 7048.13



DS06_Deans 7048.15

RF
FiDiVi Service, Polo

100% PL
100.000 Martindale



RF01



RF04



RF02



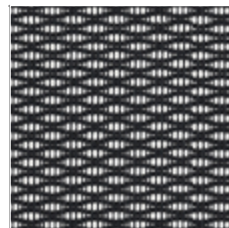
RF15



RF03

IR
FiDiVi Service, Iron

100% PL
100.000 Martindale



IR01