

**FARBEN  
DEKORE  
MUSTER  
STOFFE**

Q  
e  
R  
i  
Q

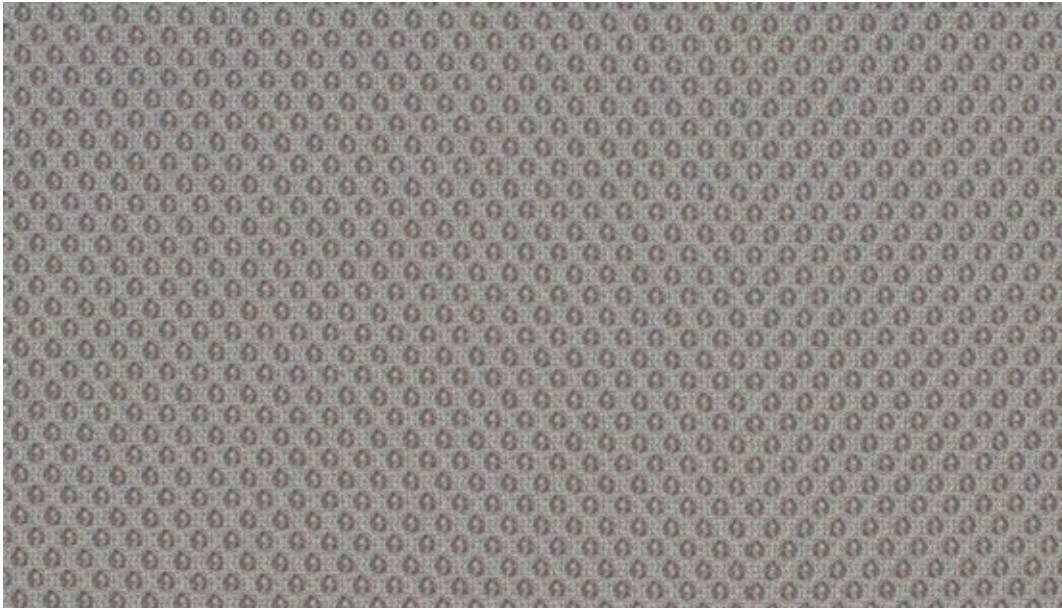


# RUNNER™

---

by Gabriel





60165



60061



61128



60165



61110



63034



60011



62064



64119



60025



64089



60999



61129



61130



65078



66140



66123



66064



66063



66120



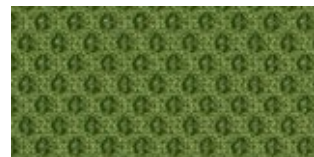
68137



68108



68056



68109



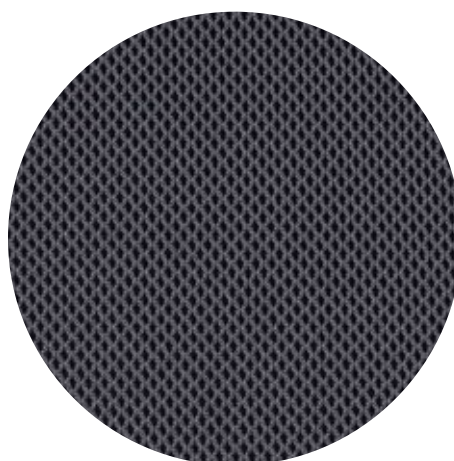
68110

# RUNNER™

---

Runner specifications: [www.gabriel.dk](http://www.gabriel.dk)

Please be aware that the PDF colour shades can appear different from the real fabric colours.  
We advise you to request actual fabric samples before ordering.

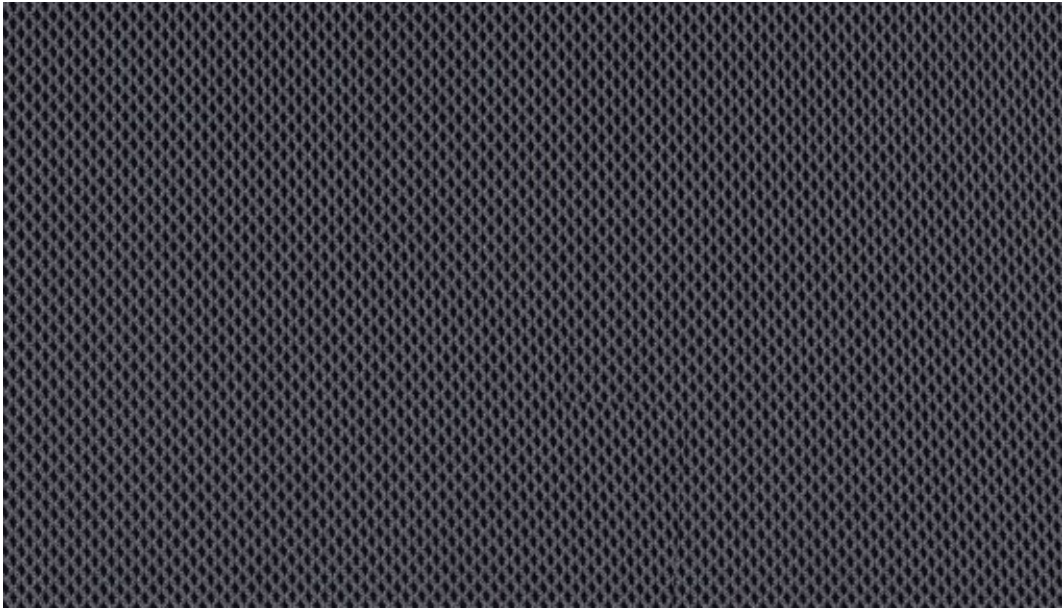


**HARLEQUIN™**

---

by Gabriel





60166



68095



61187



62044



61188



68111



65084



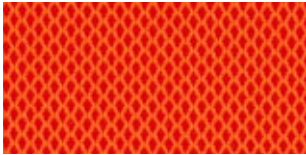
61152



68112



66118



63053



64081



66141



66142



60126



66058



60166



60999

# HARLEQUIN™

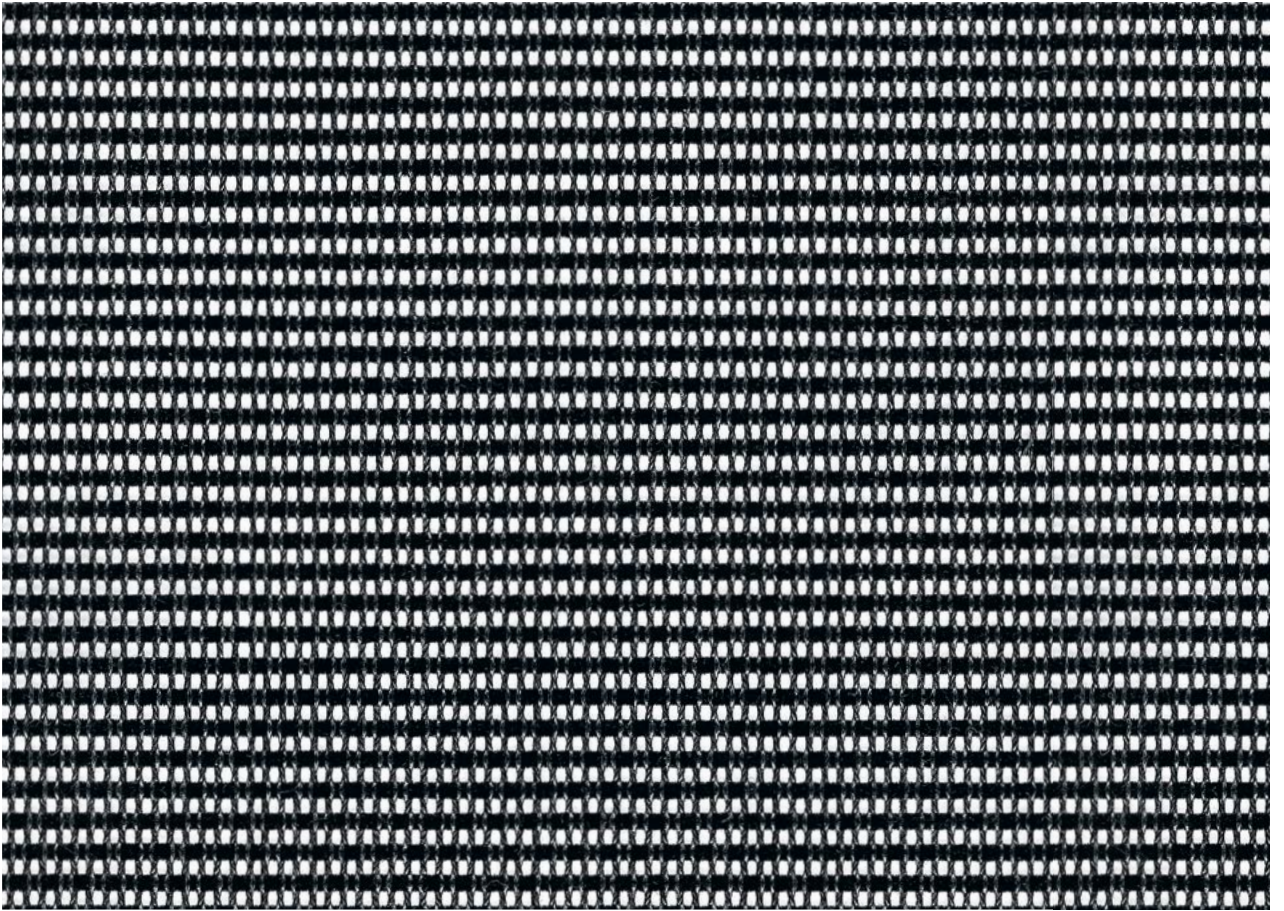
---

Harlequin specifications: [www.gabriel.dk](http://www.gabriel.dk)

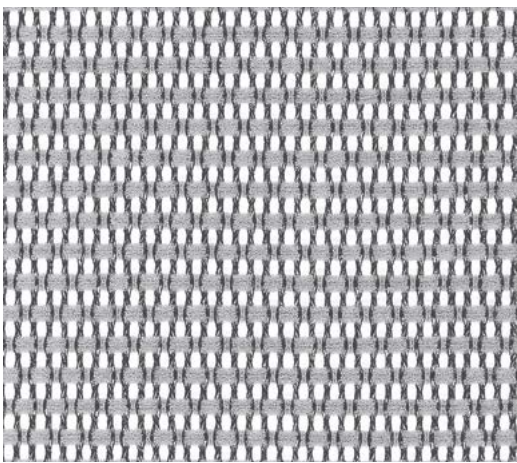
Please be aware that the PDF colour shades can appear different from the real fabric colours.  
We advise you to request actual fabric samples before ordering.



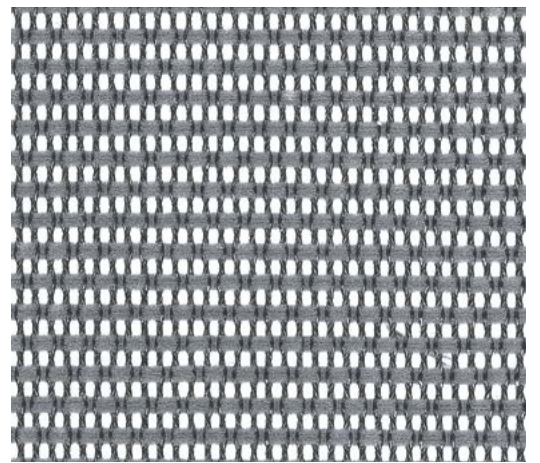




4341

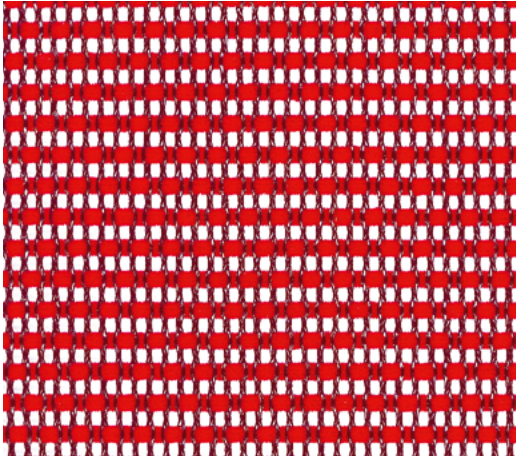


4298

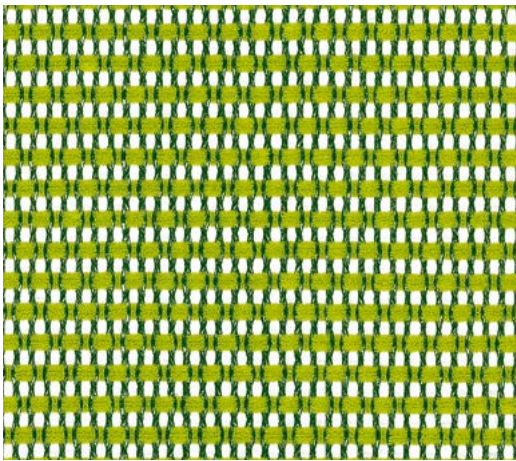


4299

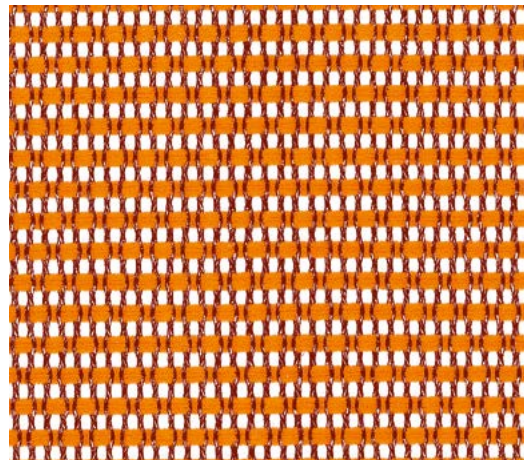




4308



4389



4306

Anwendungsbereich	Objektbereich, Büros	
Material	PA66 / PET	40% / 60%
Gewicht	pro lf. Meter ca. Gramm	360
Breite	cm	144
Scheuerfestigkeit	Scheuertouren EN ISO 12947 / 00	100 000
Pilling	Skala 1-5, EN ISO 12945 / 02	5
Lichtechtheit	Skala 1-8, EN ISO 105-B04	8

Application	Collectivités, bureaux	
Composition	PA66 / PET	40% / 60%
Poids	par mètre linéaire approx. gr.	360
Largeur	cm	144
Résistance à l'usure	tours EN ISO 12947 / 00	100 000
Boulochage	échelle 1-5, EN ISO 12945 / 02	5
Résistance à la lumière	échelle 1-8, EN ISO 105-B04	8

Fields of application	Public and commercial buildings, offices	
Material	PA66 / PET	40% / 60%
Weight	lin. metre approx. grams	360
Width	cm	144
Abrasion resistance	rubs EN ISO 12947 / 00	100 000
Pilling	scale 1-5, EN ISO 12945 / 02	5
Colour fastness to light	scale 1-8, EN ISO 105-B04	8

Toepassingsgebied	Projecten, kantoren	
Materiaal	PA66 / PET	40% / 60%
Gewicht	per mtr. in gr. ca.	360
Breedte	in cm.	144
Slijtvastheid	toeren EN ISO 12947 / 00	100 000
Pilling	schaal 1-5, EN ISO 12945 / 02	5
Kleurechtheid	schaal 1-8, EN ISO 105-B04	8

Girsberger AG, Bützberg, CH  
 Girsberger GmbH, Wien, A  
 Girsberger France, Paris, F  
 Girsberger GmbH, Endingen, D  
 Girsberger Benelux BV, Naarden - Vesting, NL  
 Tuna Girsberger Tic. AS Silivri, TR

[mail@girsberger.com](mailto:mail@girsberger.com)  
[www.girsberger.com](http://www.girsberger.com)

# PUMA



Composizione / Composition Zusammensetzung / Composition	100% Poliestere	100% Polyester	100% Polyester	100% Poliestere
Peso a ml. / Weight /Lm Gewicht/Lm / Poids/Lm	Gr. 315 ml	Gr. 315 Lm	Gr. 315 Lm	Gr. 315 Lm
Dimensione rotoli / Roll's dimension Rollenangabe / Dimensions des rouleaux	H cm. 140 Lunghezza mt 30 circa	Width cm. 140 Lenght mt 30 abt.	Breite cm. 140 Länge mt 30 ca.	Laize cm. 140 Longuer mt 30 env.
Solidità alla luce / Light fastness Lichtechtheit / Solidité à la lumière	Xenotest 5	Xenotest 5	Xenotest 5	Xenotest 5
Abrasione / Abrasion test Scheuertest / Abrasion	Test Martindale BS 5690/79 40000 cicli	Test Martindale BS 5690/79 40000 turns	Test Martindale BS 5690/79 40000 Touren	Test Martindale BS 5690/79 40000 cycles
Solidità allo sfregamento / Fastness to rubbing Reibechtheit / Solidité au frottement	UNI EN ISO 105-X12 4/5	UNI EN ISO 105-X12 4/5	UNI EN ISO 105-X12 4/5	UNI EN ISO 105-X12 4/5



**FiDiVi**  
*SERVICE*

FIDIVI SERVICE s.r.l.  
Via Sila, 28  
59100 PRATO (ITALY)

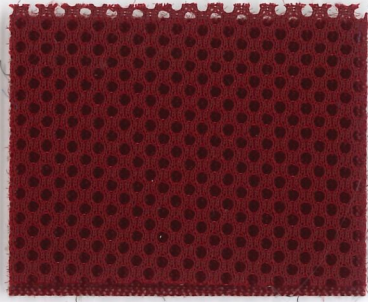
Tel. 0574.663141  
Fax 0574.663142  
E-mail: info@fidiviservice.it



# PUMA



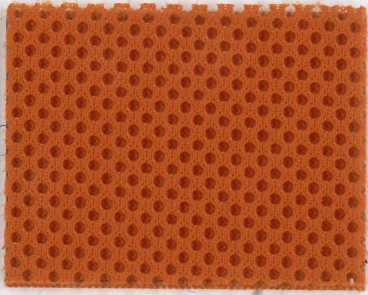
7



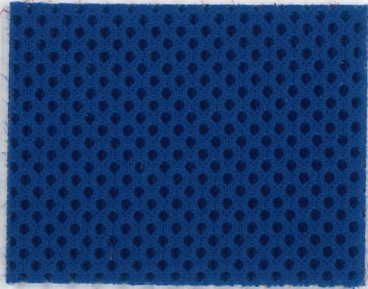
4



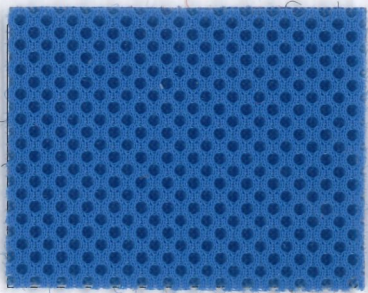
1



6



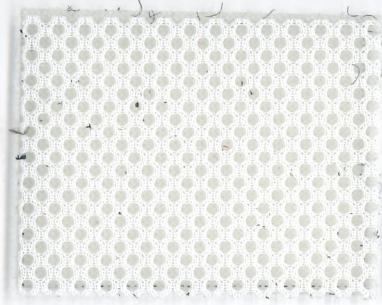
8



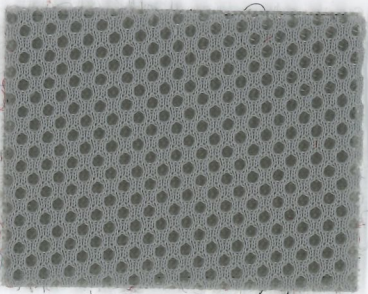
9



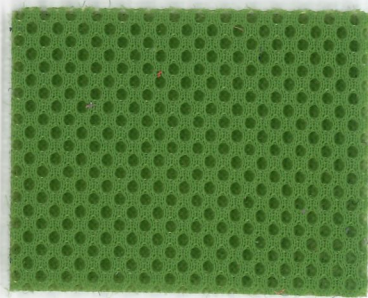
3



5



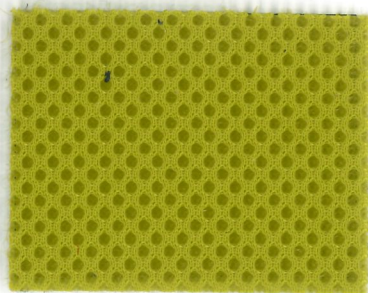
2



10



15



22

Anwendungsbereich	Objektbereich, Büros	
Material	Polyester	100%
Gewicht	g/m <sup>2</sup>	430
Breite	cm	145
Scheuerfestigkeit	Scheuertouren EN ISO 12947-2 Martindale	196000
Pilling	Skala 1-5, EN ISO 12945-2	4-5
Lichtechtheit	Skala 1-8, EN ISO 105-B02	5-6
Reibechtheit	Skala 1-5, EN ISO 105x12 (nass/trocken)	4-5
Feuersicherung	BS 5852 Part 1, BS EN 1021 1&2, UNI 9175 Class 1, CA TB117 Erfüllt auch andere Feuersicherheitsnormen. Die flammhemmende Wirkung hängt vom verwendeten Schaum ab.	

Application	Collectivités, bureaux	
Composition	Polyester	100%
Poids	g/m <sup>2</sup>	430
Largeur	cm	145
Résistance à l'usure	tours EN ISO 12947-2 Martindale	196000
Boulochage	échelle 1-5, EN ISO 12945-2	4-5
Résistance à la lumière	échelle 1-8, EN ISO 105-B02	5-6
Résistance au frottement	echelle 1-5, EN ISO 105x12 (humide/sec)	4-5
Flammabilité	BS 5852 Part 1, BS EN 1021 1&2, UNI 9175 Class 1, CA TB117 Conforme à d'autres normes de sécurité incendie. L'effet ignifugeant est fonction de la mousse utilisée.	

Fields of application	Public and commercial buildings, offices	
Material	Polyester	100%
Weight	g/m <sup>2</sup>	430
Width	cm	145
Abrasion resistance	rubs EN ISO 12947-2 Martindale	196000
Pilling	scale 1-5, EN ISO 12945-2	4-5
Colour fastness to light	scale 1-8, EN ISO 105-B02	5-6
Colour fastness to rubbing	scale 1-5, EN ISO 105x12 (wet/dry)	4-5
Flammability	BS 5852 Part 1, BS EN 1021 1&2, UNI 9175 Class 1, CA TB117 Will also pass other flammability standards. Flame retardant performance is dependent upon the foam used.	

Toepassingsgebied	Projecten, kantoren	
Materiaal	Polyester	100%
Gewicht	g/m <sup>2</sup>	430
Breedte	in cm.	145
Slijtvastheid	toeren EN ISO 12947-2 Martindale	196000
Pilling	schaal 1-5, EN ISO 12945-2	4-5
Kleurvastheid bij licht	schaal 1-8, EN ISO 105-B02	5-6
Kleurvastheid bij wrijven	schaal 1-5, EN ISO 105x12 (nat/droog)	4-5
Brandwerendheid	BS 5852 Part 1, BS EN 1021 1&2, UNI 9175 Class 1, CA TB117 Zal ook andere ontvlambaarheidsnormen doorstaan. De vlam vertragende werking is afhankelijk van het gebruikte schuim.	

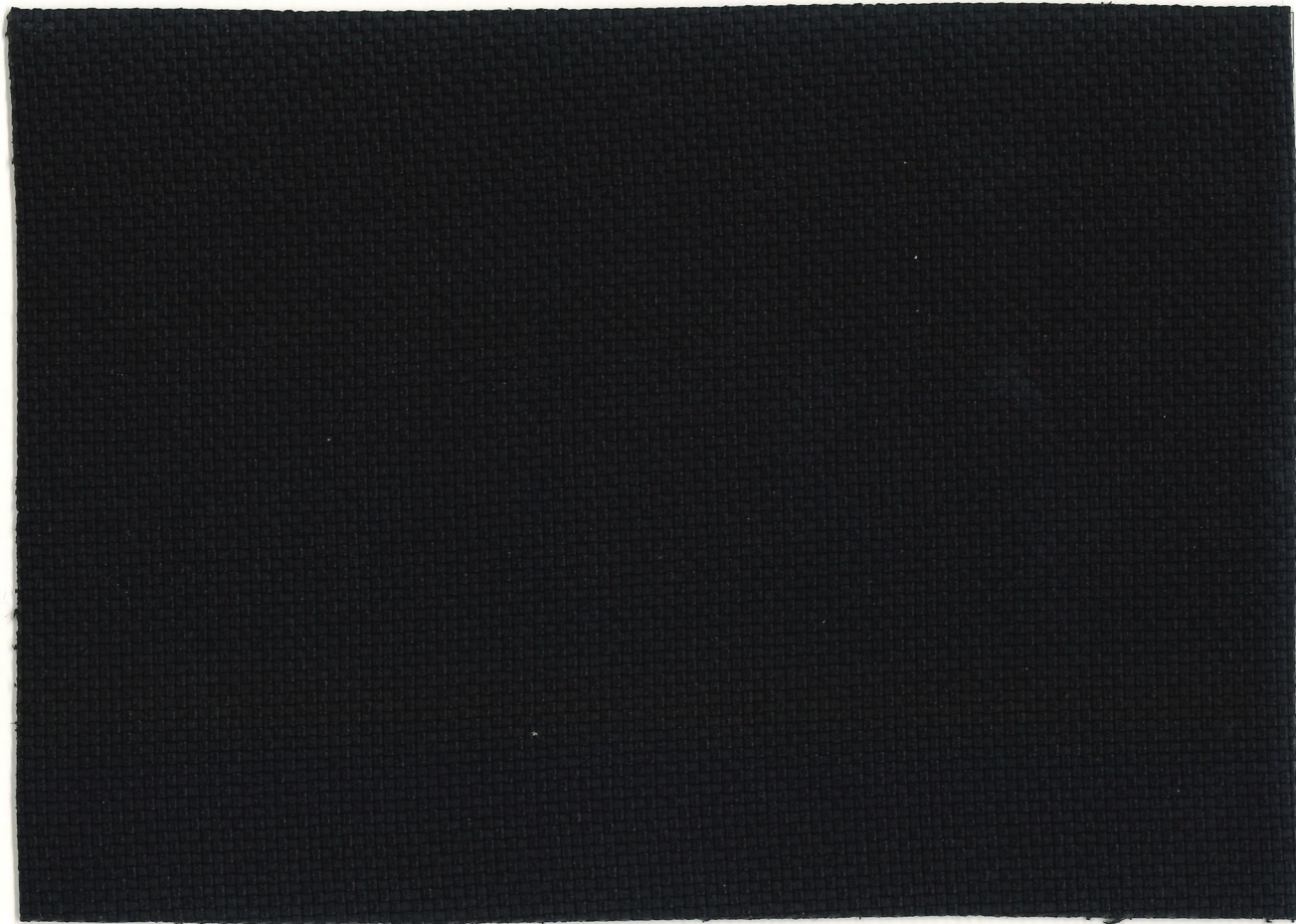
Girsberger AG, Bützberg, CH  
Girsberger GmbH, Wien, A  
Girsberger France, Paris, F  
Girsberger GmbH, Endingen, D  
Girsberger Benelux BV, Amsterdam, NL  
Tuna Girsberger Tic. AS Silivri, TR

[mail@girsberger.com](mailto:mail@girsberger.com)  
[www.girsberger.com](http://www.girsberger.com)

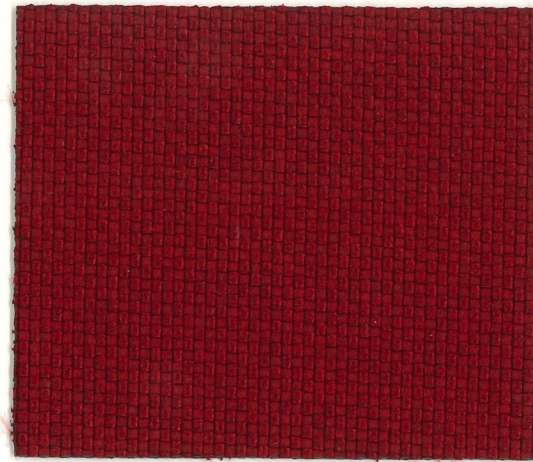
**Tangent**

**girsberger**





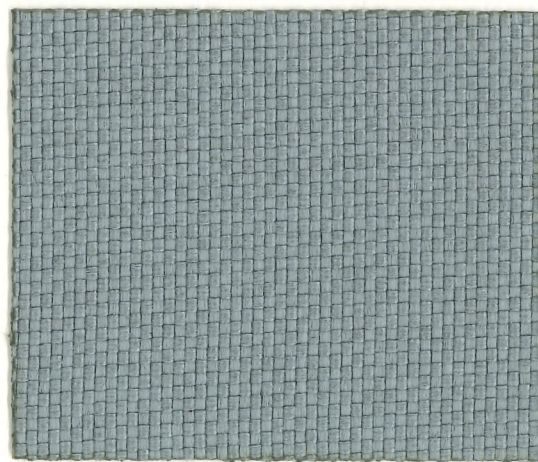
OPMEP 50



OPMEP 49



OPMEP 03



OPMEP 66



OPMEP 40



OPMEP 35



**EVENT™**

---

by Gabriel

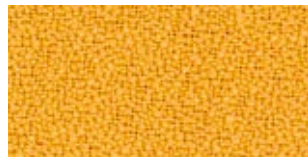




65017



60000



62013



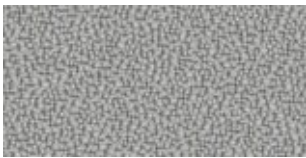
63013



61032



64032



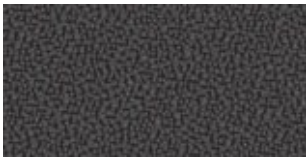
60022



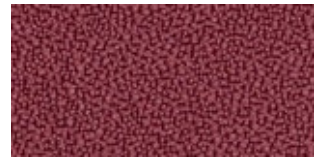
61031



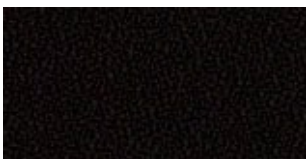
64031



60023



64030



60999



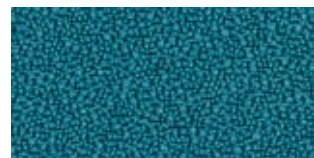
65017



67019



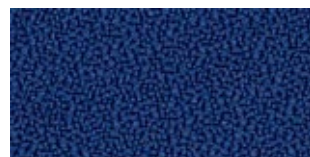
66035



67018



66038



66034



68033



65018



66036



68032



66033



66037



67020

# EVENT™

---

Event specifications: [www.gabriel.dk](http://www.gabriel.dk)

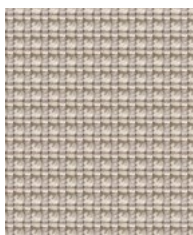
Please be aware that the PDF colour shades can appear different from the real fabric colours.  
We advise you to request actual fabric samples before ordering.

# Urban

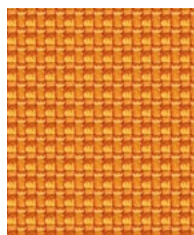
---

## camira

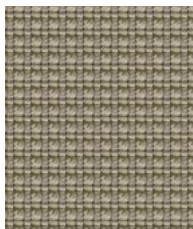




**Living**  
YN108



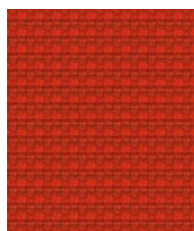
**Avenue**  
YN148



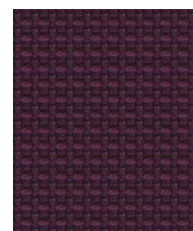
**District**  
YN212



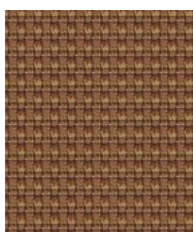
**Congestion**  
YN079



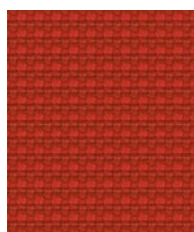
**Highrise**  
YN076



**Graffiti**  
YN204



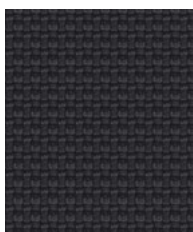
**Bench**  
YN091



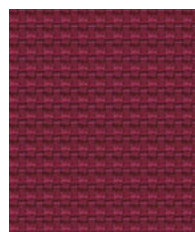
**Precinct**  
YN027



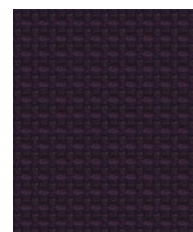
**Cosmopolitan**  
YN203



**Underground**  
YN145



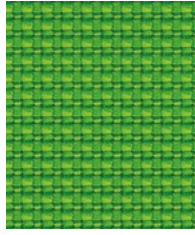
**Freeway**  
YN211



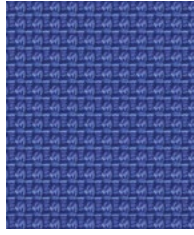
**Intersection**  
YN205



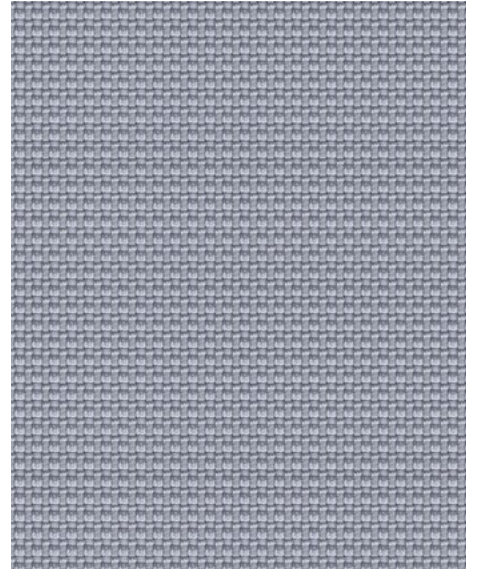
Photographic fabric scans are not colour accurate. Always request actual fabric samples before ordering.



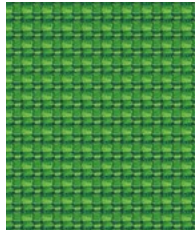
**Uptown**  
YN200



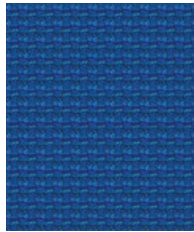
**Ringroad**  
YN208



**Sidewalk**  
YN094



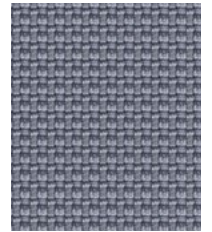
**Suburbia**  
YN159



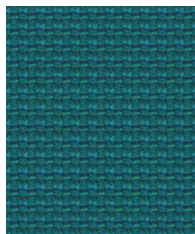
**Penthouse**  
YN202



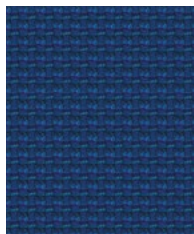
**Junction**  
YN083



**Curb**  
YN206



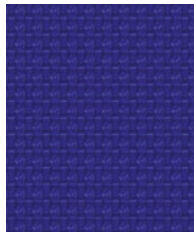
**Boulevard**  
YN160



**Conurbation**  
YN082



**Square**  
YN207



**Streetsmart**  
YN209



**Nightowl**  
YN210



**Subway**  
YN009



Task seating

Cigarette  
& MatchMedium Hazard  
B1

Washable

Bleach  
cleanable

Environmental



Year guarantee

Urban takes its inspiration from the street. It has a sharply styled architectural look with clean lines forming a structured geometric grid pattern reminiscent of a downtown urban cityscape. Lightly textured, there's an almost industrial metallic sheen to the freshly themed colourways which work with both Xtreme and Lucia.



## Technical information

### UK

#### Industry Application

Workplace, Education,  
Hospitality & Leisure  
When TriOnyx™ treated: Healthcare

#### Composition

100% post-consumer recycled polyester

#### Environment

Certified to the EU Ecolabel  
Certified to OEKO-TEX® Standard 100  
Made from 100% recycled polyester  
Non metallic dyestuffs

#### Width

140 cm minimum

#### Weight

340 g/m<sup>2</sup> ±5% (476 g/l.in.m ±5%)

#### Abrasion Resistance\*

Heavy duty / 10 year guarantee  
Independently certified to ≥100,000  
Martindale cycles

#### Flammability

EN 1021 - 1 (cigarette)  
EN 1021 - 2 (match)  
BS 7176 Low Hazard  
BS 5852 Ignition Source 5  
BS 7176 Medium Hazard  
DIN 4102 B1  
NF D 60-013  
ONORM A 3800-1  
(over CMHR 58kg/m<sup>3</sup> foam)  
UNI 9175 Classe 1 IM

*Note: Flammability performance is dependent on components used. Our certificates show what substrates have been used in our tests. For composite tests customers must ensure their complete furniture meets the necessary standards.*

#### Light Fastness

6 (ISO 105 - B02)

#### Fastness to Rubbing

Wet: 4, Dry: 4 (ISO 105 - X12)

#### Bleach Cleanable

ISO 105 E03 colour change 4 for dilution factor 1:4 chlorine solution

#### Cleaning

Vacuum regularly. Wipe with a damp cloth using soap and water or use proprietary upholstery shampoo. For deeper cleaning use steam, bleach, alcohol or professionally dry clean. Can be washed at 60°C. Full details can be found in our cleaning and disinfection guide.

\*Abrasion testing produces a wide variability of results even from the same test sample. The independent certificate of ≥100,000 cycles is available on our website or from our customer service team. Internally we also specify this product at >100,000 cycles which we believe is realistic for repeatability of testing. Please be aware that abrasion testing alone is not a reliable indicator of the actual wear performance of fabrics. We're so confident in the durability of our products that we provide a robust 10 year guarantee (full details available). Please note that seam performance is dependent on seam construction and needle and thread type. We recommend that appropriate sewing advice be taken.

Batch to batch variations in shade may occur within commercial tolerances. We reserve the right to alter technical specifications without notice. The Unregistered Design Rights and the Copyright in all designs are the exclusive property of Camira Fabrics Limited.

### D

#### Einsatzbereich

Büro, Bildung, Hotellerie & Gastronomie  
Wenn mit TriOnyx™ ausgerüstet:  
Gesundheit & Pflege

#### Zusammensetzung

100% post-consumer recycelten Polyester

#### Umweltfreundlich

Nach Zertifikat EU Ecolabel  
Nach Zertifikat OEKO-TEX® Standard 100  
Hergestellt aus 100% recycelten Polyester  
Nicht schwermetallhaltige Farbstoffe

#### Breite

140 cm nutzbare Breite

#### Gewicht

340 g/m<sup>2</sup> ±5% (476 g/lfd.m ±5%)

#### Scheuerfestigkeit\*

Schwerer Objekteinsatz / 10 Jahre  
Garantie  
Extern zertifiziert mit ≥100,000  
Scheuertouren Martindale

#### Feuersicherung

EN 1021 - 1 (Zigarettentest)  
EN 1021 - 2 (Streichholztest)  
BS 7176 Low Hazard  
BS 5852 Ignition Source 5  
BS 7176 Medium Hazard  
DIN 4102 B1  
NF D 60-013  
ONORM A 3800-1  
(mit CMHR 58kg/m<sup>3</sup> Schaum)  
UNI 9175 Classe 1 IM

*Bemerkung: Die Schwerentflammbarkeit hängt von den verwendeten Komponenten ab. Unsere Zertifikate zeigen auf, welche Substrate bei den Tests verwendet wurden. Bei Verbundtests muss sichergestellt sein, daß das komplette Möbel den entsprechenden Standards entspricht.*

#### Lichtechtheit

6 (ISO 105 - B02)

#### Reibechtheit

Nass: 4, Trocken: 4 (ISO 105 - X12)

#### Chlorbleiche-Beständig

ISO 105 E03 Farbänderung 4 bei einer 1:4 verdünnten Chlor-Lösung

#### Reinigung

Regelmässig absaugen. Mit einem feuchten Tuch mit Wasser und Seife abwischen oder mit einem geeigneten Polstershampoo behandeln. Für eine Grundreinigung bitte Dampf, Chlorbleiche, Alkohol oder professionelle Trockenreinigung verwenden. Kann bei 60°C gewaschen werden. Weitere Informationen finden Sie in unserem Leitfaden zur Reinigung und Desinfektion.

\*Die Scheuerfestigkeitsprüfung ergibt selbst bei gleichen Testmustern stark abweichende Ergebnisse. Das Zertifikat eines unabhängigen Prüfinstitutes über ≥100,000 Scheuertouren erhalten Sie von unserem Vertriebsinnendienst oder auf unserer Webseite. Intern spezifizieren wir auch dieses Produkt mit >100,000 Scheuertouren, die in der Serienfertigung als realistisch angenommen werden. Bitte nehmen Sie zur Kenntnis, dass die Scheuerfestigkeitsprüfung allein keine Aussagekraft über die Langlebigkeit eines Bezugsstoffes hat. Wir sind von der Langlebigkeit unserer Produkte überzeugt und bieten daher 10 Jahre Garantie (Details auf Anfrage). Eine optimale Nahtausreissfestigkeit hängt von der Nahtführung, der verwendeten Nadel und dem Näh-Garn ab. Wir empfehlen daher Nähversuche durchzuführen. Handelsübliche Farbabweichungen können auftreten und berechtigen nicht zur Reklamation. Wir behalten uns die Änderung technischer Spezifikationen vor. Die registrierten und nicht registrierten Urheberrechte der Dessinierungen sind ausschliessliches Eigentum der Camira Fabrics Limited.

### F

#### Application industrielle

Lieu de travail, Education,  
Hôtellerie et loisirs  
Si traitement TriOnyx™: Services de santé

#### Composition

100% polyester recyclé post consommation

#### Écologique

Certifié au certificat EU Ecolabel  
Certifié à OEKO-TEX® Standard 100  
Fabriqué d'un polyester 100% recycle  
Teintures non métalliques

#### Largeur

140 cm minimum

#### Poids

340 g/m<sup>2</sup> ±5% (476 g/m.l ±5%)

#### Résistance à l'abrasion\*

Usage intense / garantie 10 ans.  
Certificat indépendant ≥100,000 cycles  
Martindale

#### Flammabilité

EN 1021 - 1 (cigarette)  
EN 1021 - 2 (allumette)  
BS 7176 Low Hazard  
BS 5852 Ignition Source 5  
BS 7176 Medium Hazard  
DIN 4102 B1  
NF D 60-013  
ONORM A 3800-1  
(avec CMHR 58kg/m<sup>3</sup> mousse)  
UNI 9175 Classe 1 IM

*Note: La performance de flammabilité dépend des composantes utilisées. Nos certificats indiquent les substrats utilisés dans nos tests. Pour les tests composites, les clients doivent s'assurer que leurs meubles complets satisfont aux normes nécessaires.*

#### Solidité à la lumière

6 (ISO 105 - B02)

#### Solidité au Frottement

Mouillé: 4, Sec: 4 (ISO 105 - X12)

#### Nettoyable au javel

ISO 105 E03 changement de couleur 4 pour le facteur de dilution 1:4 solution de chlore

#### Nettoyage

Passez l'aspirateur régulièrement. Essayez avec un chiffon humide avec de l'eau et du savon ou utilisez un shampoing pour tissus d'ameublement exclusif. Pour un nettoyage en profondeur, utilisez la vapeur, javel, alcool ou un nettoyage à sec professionnel. Peut être lavé à la machine, programme maximum 60°C. Vous trouverez tous les détails dans notre guide de nettoyage et de désinfection.

\*Les tests de résistance à l'abrasion proposent une large variété de résultat final, parfois sur le même échantillon de tissu. Le certificat indépendant de ≥100,000 cycles est disponible sur notre site internet; vous pouvez également contacter notre Service Clients. Nous validons également – en interne – à >100,000 cycles; ce qui est, d'après nous, plus réaliste dans le but d'obtenir une continuité égale des résultats de tests. Merci de noter que l'abrasion seule ne constitue pas un indicateur de confiance dans la performance du tissu à long terme. Nous avons une confiance absolue en nos produits et leur durabilité, c'est pour cela que nous vous offrons une garantie robuste de 10 ans. Veuillez noter que la performance du joint dépend de sa construction ainsi que de l'aiguille et du type de fil utilisés. Une variation de couleurs peut provenir (commercialement tolérable). Nous réservons le droit de changer les spécifications techniques sans préavis. Les Droits de Conception non-enregistrés et les droits d'auteur de tous les motifs sont la propriété exclusive de Camira Fabrics Limited.

### ES

#### Aplicación Industrial

Puesto de Trabajo, Educación, Sector  
Hotelero & Placer  
Estando con tratamiento TriOnyx™:  
Sanidad

#### Composición

Polyester reciclado 100% post consumido

#### Ambiental

Certificado con EU Ecolabel  
Certificado de OEKO-TEX® Standard 100  
Hecho de 100% de poliéster reciclado  
Tintes no metálicos

#### Ancho

140 cm mínimo

#### Peso

340 g/m<sup>2</sup> ±5% (476 g/l.in.m ±5%)

#### Resistencia a la abrasión\*

Garantía de 10 años con uso intenso  
independientemente del certificado de  
≥100,000 Ciclos Martindale

#### Inflamabilidad

EN 1021 - 1 (cigarillo)  
EN 1021 - 2 (cerilla)  
BS 7176 Low Hazard  
BS 5852 Ignition Source 5  
BS 7176 Medium Hazard  
DIN 4102 B1  
NF D 60-013  
ONORM A 3800-1  
(sobre 58kg/m<sup>3</sup> foam CMHR)  
UNI 9175 Classe 1 IM

*Note: El rendimiento de la inflamabilidad depende de los componentes usados. Nuestros certificados muestran qué substratos se han usado en nuestros tests. Para tests compuestos nuestros clientes deben asegurar si sus muebles cumplen la normativa al uso.*

#### Solidez a la luz

6 (ISO 105 - B02)

#### Solidez al rozamiento

Húmedo: 4, Seco: 4 (ISO 105 - X12)

#### Posibilidad lavado con Lejía

ISO 105 E03 cambio color 4 para un factor de disolución 1:4 solución cloro

#### Limpieza

Uso aspirador regularmente. Limpiar con un trapo usando jabón y agua o producto limpieza para tapicerías. Para una limpieza más profunda usen vapor, lejía, alcohol o limpieza en seco. Se puede lavar a 60°C. Los detalles completos se encuentran en nuestra guía de limpieza y desinfección.

\*Los Test de Abrasión producen unos resultados muy variables incluso con la misma muestra. El certificado de ≥100,000 ciclos Martindale está disponible en nuestra web o se puede pedir al Departamento Comercial. Internamente también certificamos este producto >100,000 ciclos, que pensamos que es lo más realista posible en este caso, con una repetición de resultados tan dispares. Tengan en cuenta que el Test de Abrasión solo no es un indicador fiable sobre el desgaste de un tejido. De hecho, estamos tan convencidos en la durabilidad de nuestros tejidos, que ofrecemos una garantía de 10 años (detalles completos disponibles). Tenga en cuenta que el rendimiento de la costura depende de la construcción de la costura, además de la aguja y del tipo de rosca. Le recomendamos que se aconsejen para coser la costura. Las variaciones de lote a lote en la sombra se puede producir dentro de tolerancias comerciales. Nos reservamos el derecho a efectuar modificaciones técnicas sin previo aviso. Los derechos sobre los diseños no registrados y los derechos de autor en todos los diseños son propiedad exclusiva de Camira Fabrics Limited.



RADIO



2021

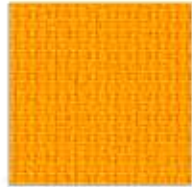
2521

2013



1010

1510



3008



3082



3094



4037



4046



4027



4028



4017



4517



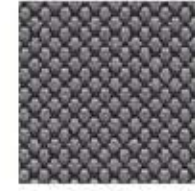
8033



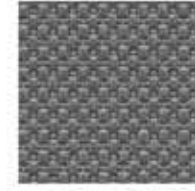
8517



8017



8532



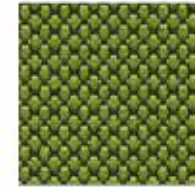
8032



8027



7025



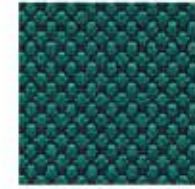
7541



7041



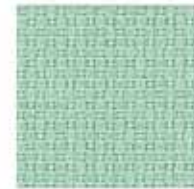
7036



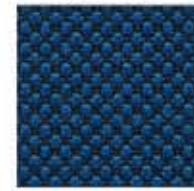
7508



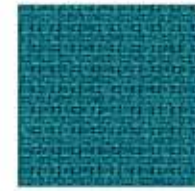
7008



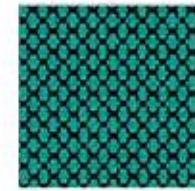
7045



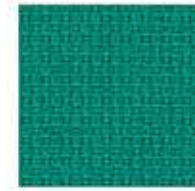
6512



6015



6526



6026



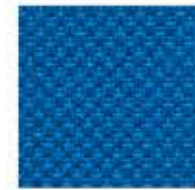
6598



6571

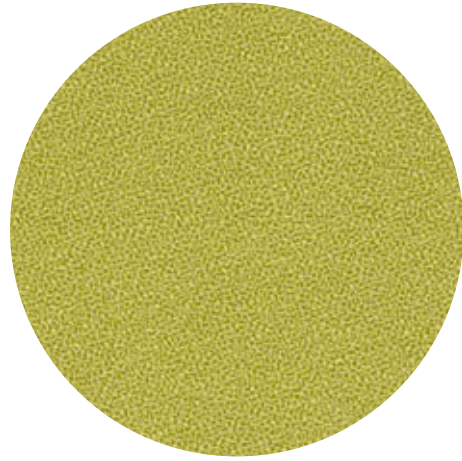


6071



6075

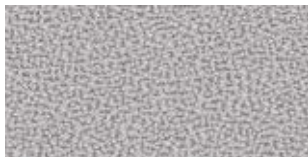




# GAJA CLASSIC™

---

by Gabriel



60001



60005



62010



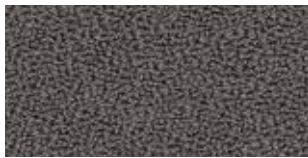
60029



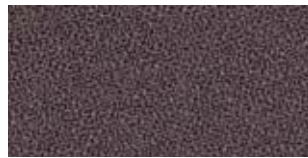
60007



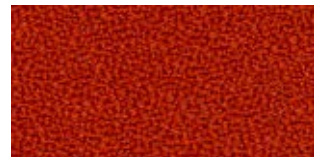
63016



60003



60022



63036



60019



61071



63004



60999



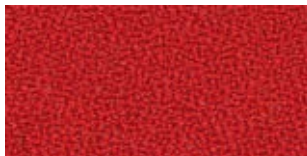
61044



61072



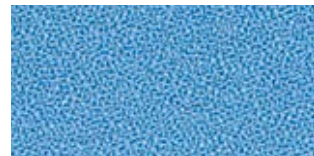
64023



64003



64096



66007



64095



64010



66010



64094



65011



66011



64089

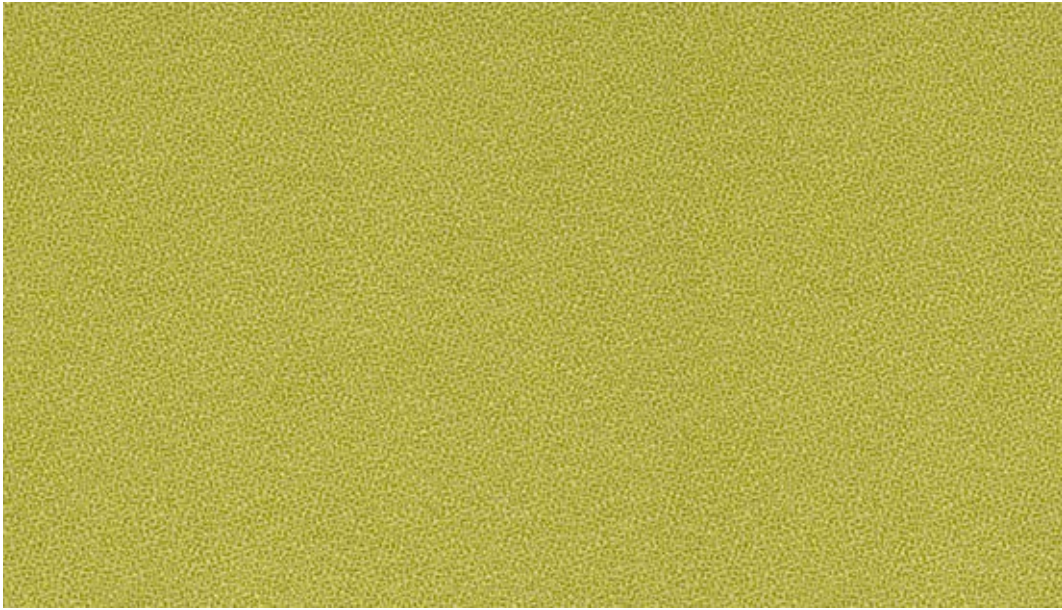


65012

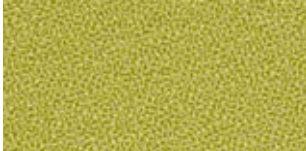


66009





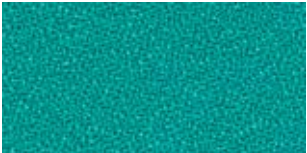
68024



68024



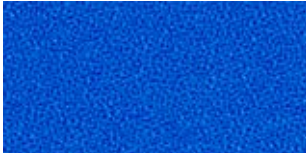
66002



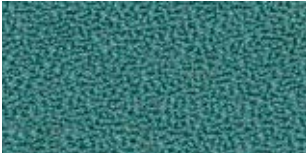
67015



68013



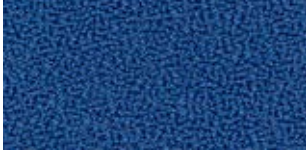
66013



67009



68002



66004



66057



68035



66005



67005



68048

# GAJA CLASSIC™

---

Gaja Classic specifications: [www.gabriel.dk](http://www.gabriel.dk)

Please be aware that the PDF colour shades can appear different from the real fabric colours.  
We advise you to request actual fabric samples before ordering.

**Blazer**

**camira**



**Dunhurst**  
CUZ58



**Eynesbury**  
CUZ2W



**Wesley**  
CUZ82



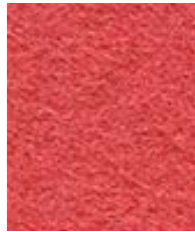
**Goldsmith**  
CUZ39



**Edge Hill**  
CUZ90



**Stanford**  
CUZ2R



**Barlborough**  
CUZ3D



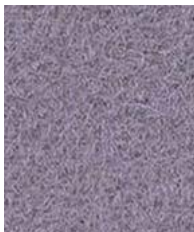
**Oriol**  
CUZ18



**Wellington**  
CUZ13



**Handcross**  
CUZ63



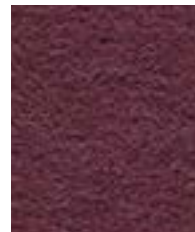
**Sheffield**  
CUZ1T



**Scottsdale**  
CUZ3E



**Holyoke**  
CUZ2T



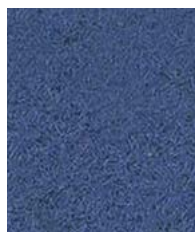
**Barnard**  
CUZ2S



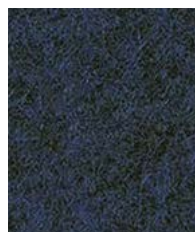
**Magdalene**  
CUZ21



**Marymount**  
CUZ3C



**Manchester**  
CUZ1V



**Newcastle**  
CUZ1W



**Oxford**  
CUZ09



**Edinburgh**  
CUZ1Y



**Woodcroft**  
CUZ2Z



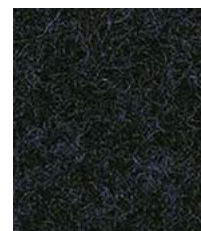
**Aston**  
CUZ02



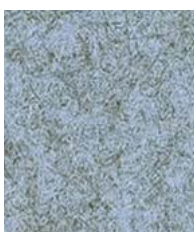
**Vassar**  
CUZ2U



**Knightsbridge**  
CUZ26



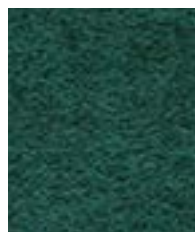
**Glenalmond**  
CUZ62



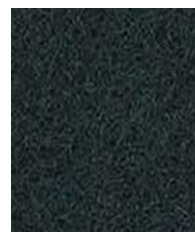
**Plymouth**  
CUZ1R



**Latymer**  
CUZ33



**Abertay**  
CUZ3B



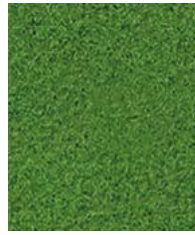
**Hull**  
CUZ1P



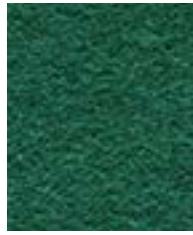
**Winchester**  
CUZ12



Photographic fabric scans are not colour accurate. Always request actual fabric samples before ordering.



**Newport**  
CUZ1L



**Montcrest**  
CUZ3A



**Tyndale**  
CUZ2Y



**Penola**  
CUZ2X



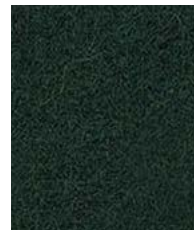
**Bryanston**  
CUZ53



**Ulster**  
CUZ1F



**Camphill**  
CUZ1K



**Cardiff**  
CUZ1N



**Glasgow**  
CUZ1M



**Dartmouth**  
CUZ2Q



**Fairfield**  
CUZ47



**St Andrews**  
CUZ86



**Trevelyan**  
CUZ31



**Silverdale**  
CUZ28



**Surrey**  
CUZ1E



**Aberlour**  
CUZ1J



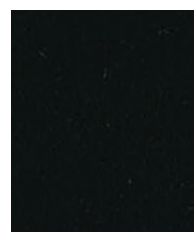
**Silcoates**  
CUZ30



**Bromsgrove**  
CUZ35



**Kingsmead**  
CUZ67



**Napier**  
CUZ08





Task seating



Soft seating

Cigarette  
& Match

Environmental



Year guarantee



Curtains



Medium Hazard

With Treatment

Blazer is a classic pure new wool upholstery fabric with a billiard cloth felted finish. It is made from premium New Zealand lambswool, where responsible farming provides the highest quality raw material which is soft, clean and bright, which is ideal for spinning, weaving and dyeing. The colour palette is an exciting mix of solids and mélanges across the full colour spectrum, creating a versatile fabric suitable for wide-ranging furniture applications.



## Technical information

### UK

#### Industry Application

Workplace, Education, Home  
When FR treated: Hospitality & Lesiure

**Composition**  
100% Virgin Wool

**Environment**  
Certified to Indoor Advantage™ Gold  
Rapidly renewable and compostable  
Non metallic dyestuffs

**Width**  
140 cm minimum

**Weight**  
460 g/m<sup>2</sup> ±5% (644 g/lin.m ±5%)

**Abrasion Resistance\***  
Heavy duty / 10 year guarantee.  
Independently certified to ≥50,000  
Martindale cycles

**Flammability**  
EN 1021 - 1 (cigarette)  
EN 1021 - 2 (match)  
BS 7176 Low Hazard  
NF D 60-013  
ONORM B 3825 & A 3800-1  
(over CMHR 58kg/m<sup>3</sup> Foam)  
UNI 9175 Classe 1 IM  
BS 476 Part 7 Class 1 (Adhered)  
EN 13501-1 Adhered Class D, s1, d0  
IMO FTP Code (Part 8)  
The Furniture and Furnishing (Fire Safety)  
Regulations 1988 (UK domestic cigarette  
and match)

**Optional: Please specify when  
ordering:**  
BS 5852 Ignition Source 5 when FR  
treated  
BS 7176 Medium Hazard when FR treated  
BS 476 Part 6 Class 0 when FR treated  
(Adhered)  
EN 13501-1 Adhered Class B, s1, d0  
when FR treated  
EN 13501-1 Un-adhered Class D, s2, d0  
when FR treated  
BS 5867-2: Type B Curtains & Drapes  
when FR treated

*Note: Flammability performance is  
dependent on components used. Our  
certificates show what substrates have  
been used in our tests. For composite  
tests customers must ensure their  
complete furniture meets the necessary  
standards.*

**Light Fastness**  
5 (ISO 105 - B02)

**Fastness to Rubbing**  
Wet: 4, Dry: 4 (ISO 105 - X12)

**Cleaning**  
Vacuum regularly. Wipe with a damp cloth  
using soap and water or use proprietary  
upholstery shampoo. For deeper cleaning  
use steam or professionally dry clean. Full  
details can be found in our cleaning and  
disinfection guide.

\*Abrasion testing produces a wide variability  
of results even from the same test sample. The  
independent certificate of ≥50,000 cycles is  
available on our website or from our customer  
service team. Internally we specify this product  
at >20,000 cycles which we believe is realistic  
for repeatability of testing. Please be aware  
that abrasion testing alone is not a reliable  
indicator of the actual wear performance of  
fabrics. We're so confident in the durability  
of our products that we provide a robust 10  
year guarantee (full details available).

Please note that seam performance is  
dependent on seam construction and  
needle and thread type. We recommend that  
appropriate sewing advice be taken.

Batch to batch variations in shade may occur  
within commercial tolerances. We reserve the  
right to alter technical specifications without  
notice. The Unregistered Design Rights and  
the Copyright in all designs are the exclusive  
property of Camira Fabrics Limited.

### D

**Einsatzbereich**  
Büro, Bildung, Wohnbereich  
Wenn mit FR ausgerüstet: Hotellerie &  
Gastronomie

**Zusammensetzung**  
100% Schurwolle

**Umweltfreundlich**  
Nach Zertifikat Indoor Advantage™ Gold  
Schnell erneuerbar und kompostierbar  
Nicht schwermetallhaltige Farbstoffe

**Breite**  
140 cm nutzbare Breite

**Gewicht**  
460 g/m<sup>2</sup> ±5% (644 g/lfd.m ±5%)

**Scheuerfestigkeit\***  
Schwerer Objektsatz / 10 Jahre Garantie  
Extern zertifiziert mit ≥50,000  
Scheuertouren Martindale

**Feuersicherung**  
EN 1021 - 1 (Zigarettentest)  
EN 1021 - 2 (Streichholzttest)  
BS 7176 Low Hazard  
NF D 60-013  
ONORM B 3825 & A 3800-1  
(mit CMHR 58kg/m<sup>3</sup> Schaum)  
UNI 9175 Classe 1 IM  
BS 476 Part 7 Class 1 (Adhered)  
EN 13501-1 Adhered Class D, s1, d0  
IMO FTP Code (Part 8)

The Furniture and Furnishing (Fire Safety)  
Regulations 1988 (UK Wohnmöbel  
Zigarettentest und Streichholzttest)  
**Bitte bei Auftragserteilung angeben:**  
BS 5852 Ignition Source 5 wenn mit FR  
ausgerüstet  
BS 7176 Medium Hazard wenn mit FR  
ausgerüstet  
BS 476 Part 6 Class 0 wenn mit FR  
ausgerüstet (Adhered)  
EN 13501-1 Adhered Class B, s1, d0  
wenn mit FR ausgerüstet  
EN 13501-1 Un-adhered Class D, s2, d0  
wenn mit FR ausgerüstet  
BS 5867-2: Type B Curtains & Drapes  
wenn mit FR ausgerüstet  
**Bemerkung: Die Schwerentflammbarkeit  
hängt von den verwendeten Komponenten  
ab. Unsere Zertifikate zeigen auf, welche  
Substrate bei den Tests verwendet  
wurden. Bei Verbundtests muss  
sichergestellt sein, daß das komplette  
Möbel den entsprechenden  
Standards entspricht.**

**Lichtechtheit**  
5 (ISO 105 - B02)

**Reibechtheit**  
Nass: 4, Trocken: 4 (ISO 105 - X12)

**Reinigung**  
Regelmässig absaugen. Mit einem  
feuchten Tuch mit Wasser und Seife  
abwischen oder mit einem geeigneten  
Polstershampoo behandeln. Für eine  
Grundreinigung bitte Dampf oder  
professionelle Trockenreinigung  
verwenden. Weitere Informationen finden  
Sie in unserem Leitfadens zur Reinigung  
und Desinfektion.

\*Die Scheuerfestigkeitsprüfung ergibt selbst  
bei gleichen Testmustern stark abweichende  
Ergebnisse. Das Zertifikat eines unabhängigen  
Prüfinstitutes über ≥50,000 Scheuertouren erhalten  
Sie von unserem Vertriebsinnendienst oder auf  
unserer Webseite. Intern spezifizieren wir dieses  
Produkt mit >20,000 Scheuertouren, die in der  
Serienfertigung als realistisch angenommen  
werden. Bitte nehmen Sie zur Kenntnis, dass  
die Scheuerfestigkeitsprüfung allein keine  
Ausgangskraft über die Langlebigkeit eines  
Bезugsstoffes hat. Wir sind von der Langlebigkeit  
unserer Produkte überzeugt und bieten daher  
10 Jahre Garantie (Details auf Anfrage).

Eine optimale Nahtausrüstbarkeit hängt  
von der Nähmaschine, der verwendeten Nadel  
und dem Näh-Garn ab. Wir empfehlen  
daher Nähversuche durchzuführen.

Handelsübliche Farbabweichungen können  
auftreten und berechtigen nicht zur Reklamation.  
Wir behalten uns die Änderung technischer  
Spezifikationen vor. Die registrierten und  
nicht registrierten Urheberrechte der  
Dessinierungen sind ausschliessliches  
Eigentum der Camira Fabrics Limited.

### F

**Application industrielle**  
Lieu de travail, Education, L'univers de  
la maison  
Si traitement FR: Hotellerie et loisir

**Composition**  
100% Laine Vierge

**Écologique**  
Certifié à Indoor Advantage™ Gold  
Rapidement renouvelable et compostable  
Teintures non métalliques

**Largeur**  
140 cm minimum

**Poids**  
460 g/m<sup>2</sup> ±5% (644 g/m.l ±5%)

**Résistance à l'abrasion\***  
Usage intense / garantie 10 ans.  
Certificat indépendant ≥50,000 cycles  
Martindale

**Flammabilité**  
EN 1021 - 1 (cigarette)  
EN 1021 - 2 (allumette)  
BS 7176 Low Hazard  
NF D 60-013  
ONORM B 3825 & A 3800-1  
(avec CMHR 58kg/m<sup>3</sup> Mousse)  
UNI 9175 Classe 1 IM  
BS 476 Part 7 Class 1 (Adhered)  
EN 13501-1 Adhered Class D, s1, d0  
IMO FTP Code (Part 8)

The Furniture and Furnishing (Fire Safety)  
Regulations 1988 (UK domicile cigarette  
et allumette)  
**Prère de la mentionner lors de la  
commande:**  
BS 5852 Ignition Source 5 si traitement FR  
BS 7176 Medium Hazard si traitement FR  
BS 476 Part 6 Class 0 si traitement FR  
(Adhered)  
EN 13501-1 Adhered Class B, s1, d0  
si traitement FR  
EN 13501-1 Un-adhered Class D, s2, d0  
si traitement FR  
BS 5867-2: Type B Curtains & Drapes  
si traitement FR  
*Notez: La performance de flammabilité  
dépend des composantes utilisées. Nos  
certificats indiquent les substrats utilisés  
dans nos tests. Pour les tests composites,  
les clients doivent s'assurer que leurs  
meubles complets satisfont aux normes  
nécessaires.*

**Solidité à la lumière**  
5 (ISO 105 - B02)

**Solidité au Frottement**  
Mouillé: 4, Sec: 4 (ISO 105 - X12)

**Nettoyage**  
Passez l'aspirateur régulièrement.  
Essayez avec un chiffon humide avec de  
l'eau et du savon ou utilisez un  
shampooing pour tissus d'ameublement  
exclusif. Pour un nettoyage en profondeur,  
utilisez la vapeur ou un nettoyage à sec  
professionnel. Vous trouverez tous les  
détails dans notre guide de nettoyage et  
de désinfection.

\*Les tests de résistance à l'abrasion proposent  
une large variété de résultat final, parfois sur  
le même échantillon de tissu. Le certificat  
indépendant de ≥50,000 cycles est disponible  
sur notre site internet; vous pouvez également  
contacter notre Service Clients. Nous validons  
ce produit – en interne – à >20,000 cycles; ce  
qui est, d'après nous, plus réaliste des dans le but  
d'obtenir une continuité égale des résultats de  
tests. Merci de noter que l'abrasion seule ne  
constitue pas un indicateur de confiance dans  
la performance du tissu à long terme. Nous  
avons une confiance absolue en nos produits  
et leur durabilité, c'est pour cela que nous  
vous offrons une garantie robuste de 10 ans.

Veuillez noter que la performance du joint  
dépend de sa construction ainsi que de  
l'iguille et du type de fil utilisés.

Une variation de couleurs peut provenir  
(commercialement tolérable). Nous réservons le  
droit de changer les spécifications techniques sans  
préavis. Les Droits de Conception non-enregistrés  
et les droits d'auteur de tous les motifs sont la  
propriétés exclusives de Camira Fabrics Limited.

### ES

**Aplicación Industrial**  
Puesto de Trabajo, Educación, Hogar  
Estando con tratamiento: Sector Hotelero  
& Placer

**Composición**  
100% Lana Virgen

**Ambiental**  
Certificado de Indoor Advantage™ Gold  
Rapidamente renovable y compostable  
Tintes no metálicos

**Ancho**  
140 cm mínimo

**Peso**  
460 g/m<sup>2</sup> ±5% (644 g/lin.m ±5%)

**Resistencia a la abrasión\***  
Garantía de 10 años con uso intenso  
independientemente del certificado de  
≥50,000 Ciclos Martindale

**Inflamabilidad**  
EN 1021 - 1 (cigarillo)  
EN 1021 - 2 (cerilla)  
BS 7176 Low Hazard  
NF D 60-013  
ONORM B 3825 & A 3800-1  
(sobre 58kg/m<sup>3</sup> Foam CMHR)  
UNI 9175 Classe 1 IM  
BS 476 Part 7 Class 1 (Adhered)  
EN 13501-1 Adhered Class D, s1, d0  
IMO FTP Code (Part 8)

The Furniture and Furnishing (Fire Safety)  
Regulations 1988 (UK doméstico cigarillo  
y cerilla)  
**Por favor especificar cuando se  
requiere en el pedido:**  
BS 5852 Ignition Source 5 estando con  
tratamiento FR  
BS 7176 Medium Hazard estando con  
tratamiento FR  
BS 476 Part 6 Class 0 estando con  
tratamiento FR (Adhered)  
EN 13501-1 Adhered Class B, s1, d0  
estando con tratamiento FR  
EN 13501-1 Un-adhered Class D, s2, d0  
estando con tratamiento FR  
BS 5867-2: Type B Curtains & Drapes  
estando con tratamiento FR  
*Nota: El rendimiento de la inflamabilidad  
depende de los componentes usados.  
Nuestros certificados muestran qué  
substratos se han usado en nuestros tests.  
Para tests compuestos nuestros clientes  
deben asegurar si sus muebles cumplen  
la normativa al uso.*

**Solidez a la luz**  
5 (ISO 105 - B02)

**Solidez al rozamiento**  
Húmedo: 4, Seco: 4 (ISO 105 - X12)

**Limpeza**  
Uso aspirador regularmente. Limpiar con  
un trapo usando jabón y agua o producto  
limpieza para tapicerías. Para una  
limpieza más profunda usen vapor o  
limpieza en seco profesional. Los detalles  
completos se encuentran en nuestra guía  
de limpieza y desinfección.

\*Los Test de Abrasión producen unos resultados  
mu variables incluso con la misma muestra.  
El certificado de ≥50,000 ciclos Martindale está  
disponible en nuestra web o se puede pedir al  
Departamento Comercial. Internamente  
certificamos este producto >20,000 ciclos, que  
pensamos que es lo más realista posible en  
este caso, con una repetición de resultados  
tan dispares. Tengan en cuenta que el Test de  
Abrasión solo no es un indicador fiable sobre  
el desgaste de un tejido. De hecho, estamos  
tan convencidos en la durabilidad de nuestros  
tejidos, que ofrecemos una garantía de 10  
años (detalles completos disponibles).

Tenga en cuenta que el rendimiento de la costura  
depende de la construcción de la costura, además  
de la aguja y del tipo de rosca. Le recomendamos  
que se aconsejen para coser la costura.

Las variaciones de lote a lote en la sombra  
se puede producir dentro de tolerancias  
comerciales. Nos reservamos el derecho a  
efectuar modificaciones técnicas sin previo aviso.  
Los derechos sobre los diseños no registrados y  
los derechos de autor en todos los diseños son  
propiedad exclusiva de Camira Fabrics Limited.

Q  
B  
B  
R  
E



**FAME™**

---

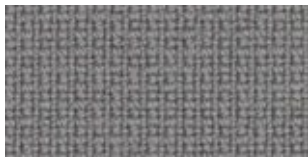
by Gabriel



60005



61136



60078



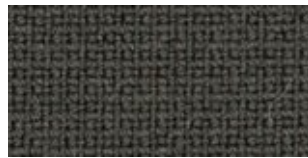
61135



61003



60003



61060



61131



61133



63076



60017



60019



61047



60999



60051



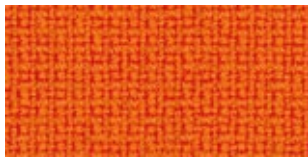
61044



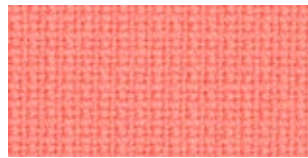
63077



64169



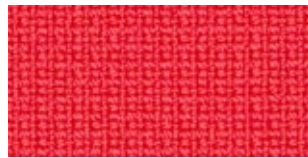
63016



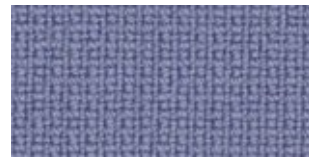
64165



63078



64166



65081



64168



64119



65082



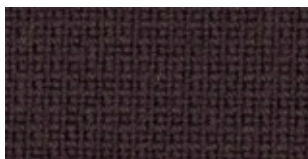
64167



64089



64055



61108

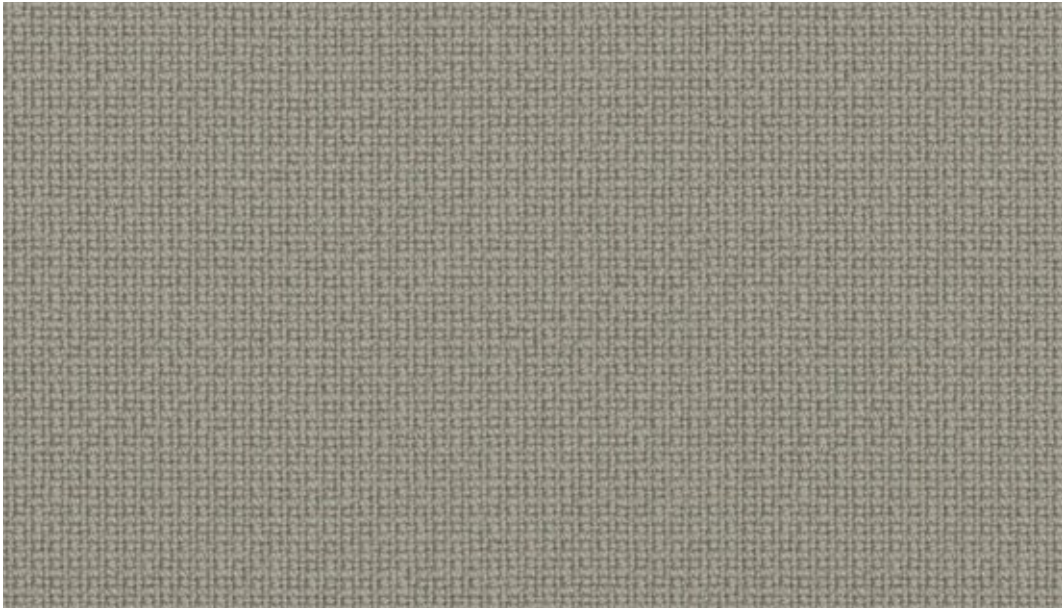


64058

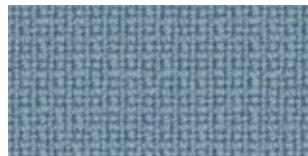


66132

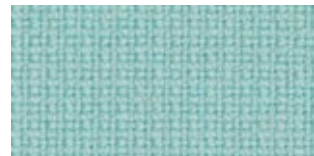




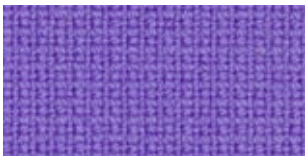
61136



66130



67068



65083



66118



66133



65084



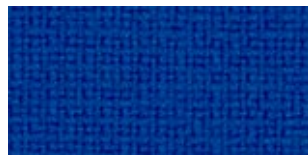
66131



67016



66005



66075



67004



66061



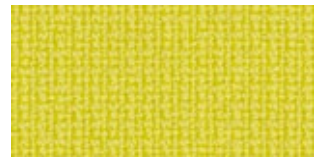
66032



66071



68145



62067



68147



68144



62068



67067



68035



68004



67069



68146



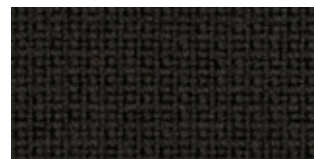
68148



67005



68143



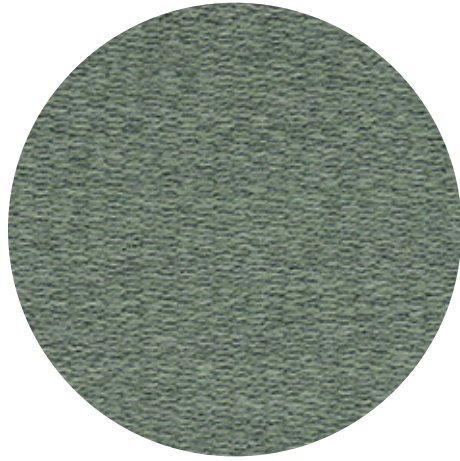
61134

# FAME™

---

Fame specifications: [www.gabriel.dk](http://www.gabriel.dk)

Please be aware that the PDF colour shades can appear different from the real fabric colours.  
We advise you to request actual fabric samples before ordering.



**MOOD™**

---

by Gabriel





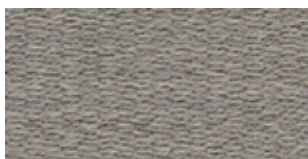
1101



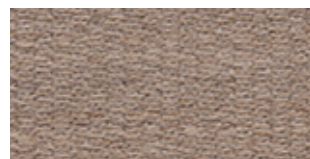
1104



1105



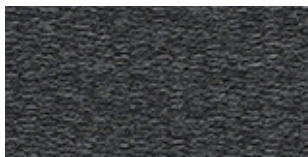
3101



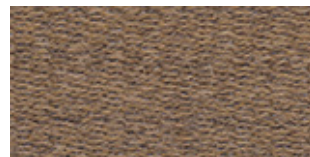
1103



4101



2101



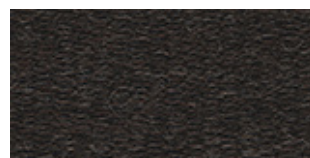
4104



3102



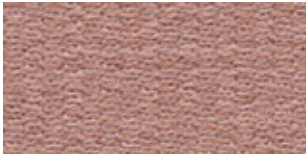
2104



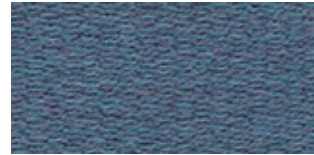
2102



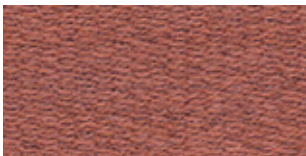
5101



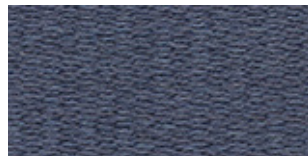
1106



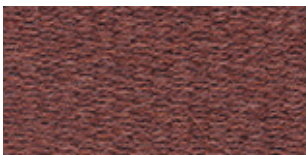
4102



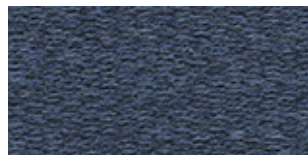
3105



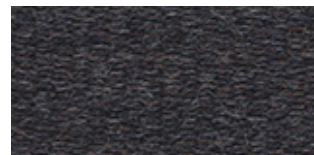
5104



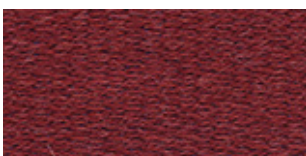
8101



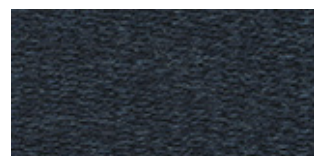
2106



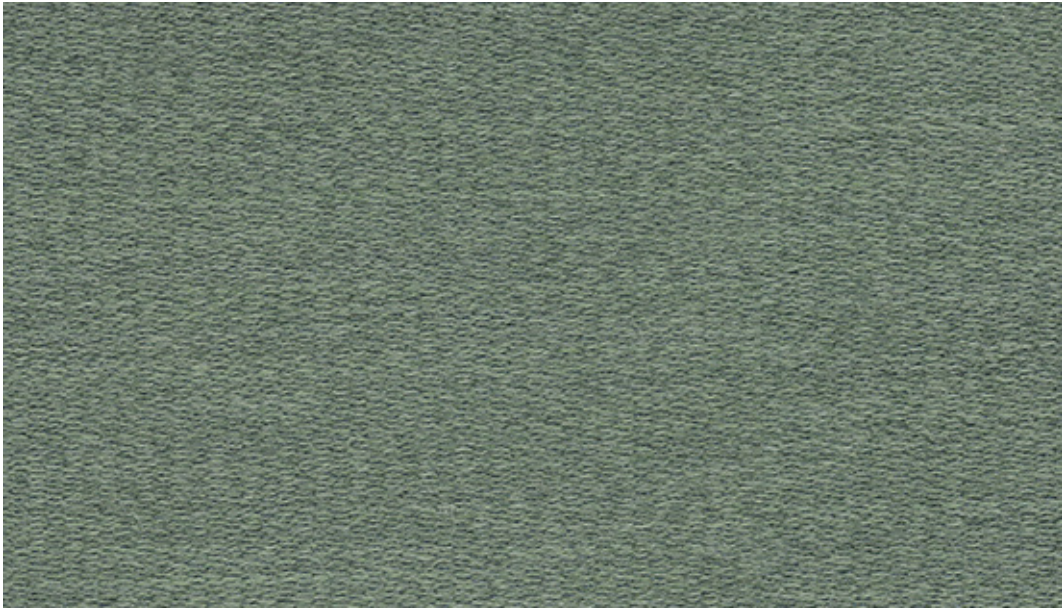
2105



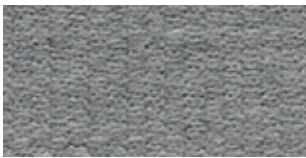
5102



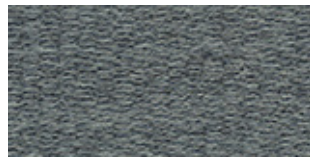
2103



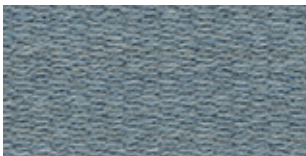
4106



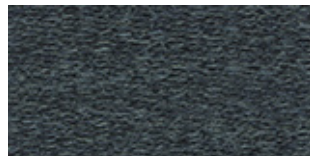
1102



4105



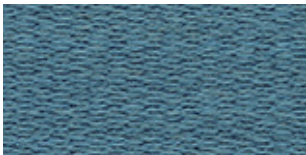
3103



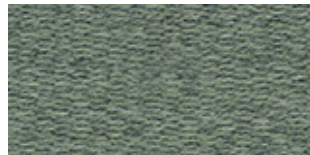
2107



3104



5103



4106



4103



5105



6101

# MOOD™

---

Mood specifications: [www.gabriel.dk](http://www.gabriel.dk)

Please be aware that the PDF colour shades can appear different from the real fabric colours.  
We advise you to request actual fabric samples before ordering.



**JAB**  
ANSTOETZ  
CONTRACT

**JAB**  
ANSTOETZ  
CONTRACT

JAB JOSEF ANSTOETZ KG | Potsdamer Str. 160 | D 33719 Bielefeld  
Tel. +49 (0)5 21 / 20 93-430 | Fax +49 (0)521 / 20 93-1430 | E-mail: jabobjekt@jab.de



Bezugstoff  
Upholstery fabric

FOX

FOX 1-3136

Anwendungsbereich  
Bezugstoff  
For upholstery use

Mindestmenge Sonderfarben Minimum quantity special colours	300 m
Material Composition	100% PES
Breite Width	140 cm / 55"
Farben Colours	32
Scheuerfestigkeit Abrasion resistance	80.000 Martindale 100.000 Wyzenbeek
Brandnormen Fire standards	EN 102-1/2 BS 5852 Crib 5 NF P 92-503-507 M1 UNI 9175 DIN 4102-1 B1 BS 5867 Part 2, Type B NFPA 701,
Lichtechtheit Light fastness	4 – 5
Pilling	4
Schallabsorption Sound absorption	$\alpha_w = 0,60$
Reibechtheit Rub fastness	4
Gewicht Weight	615 g/lfm
Pflege Care	



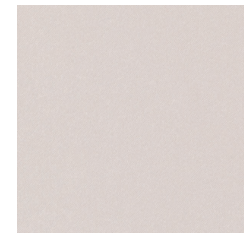
IMO tested acoustics



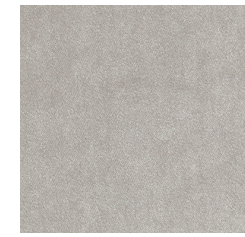
FOX



1-3136-070



1-3136-073



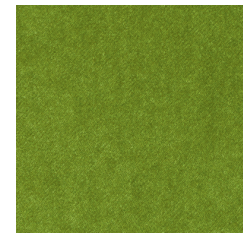
1-3136-091



1-3136-031



1-3136-021



1-3136-030



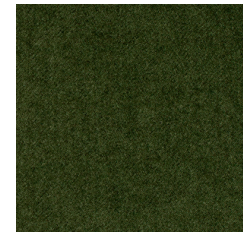
1-3136-096



1-3136-095



1-3136-022



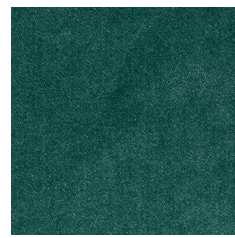
1-3136-032

**JAB**  
ANSTOETZ  
CONTRACT

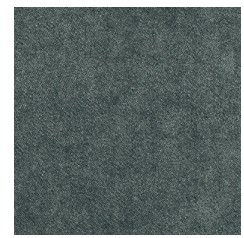


1-3136-092

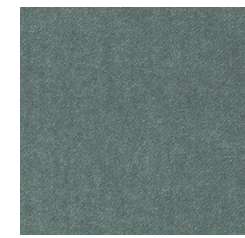
**JAB**  
ANSTOETZ  
CONTRACT



1-3136-080



1-3136-097



1-3136-093



1-3136-023



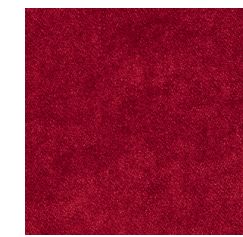
1-3136-020



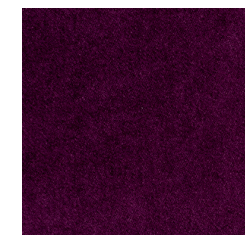
1-3136-190



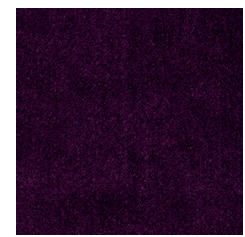
1-3136-098



1-3136-010

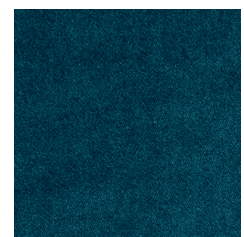


1-3136-081



1-3136-082

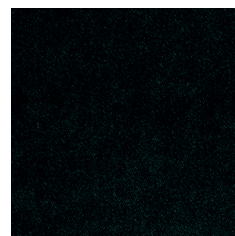
1-3136-050



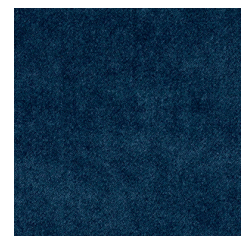
1-3136-051



1-3136-083



1-3136-099



1-3136-050



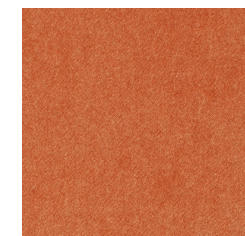
1-3136-094



1-3136-040



1-3136-060



1-3136-062



1-3136-061



Natura

 climatex®  
performance fabrics



Natura

 climatex®  
performance fabrics



Printed in Cradle to Cradle®-process on Cradle®-paper

JAB JOSEF ANSTOETZ KG  
Potsdamer Str. 160  
D-33719 Bielefeld  
Tel.: +49 (0)5 21 / 20 93-636  
E-mail: climatex@jab.de

**JAB**  
ANSTOETZ  
CONTRACT

**JAB**  
ANSTOETZ  
CONTRACT



# Natura



**Design**  
Climatex

**Farben / Colours**  
32

**Material / Composition**  
69 % PA  
18 % WO  
13 % CV

**Nutzbreite / Nominal width**  
141 cm

**Gewicht / Weight**  
455 g/lfm

**Schallabsorption / Sound absorption**  
 $\alpha_w = 0,50$

**Scheuerfestigkeit / Abrasion resistance**  
500.000 Martindale, EN ISO 12947-2

**Pilling**  
4 - 5, EN ISO 12945-2

**Lichtechtheit / Light fastness**  
6 - 7, EN ISO 105-B02

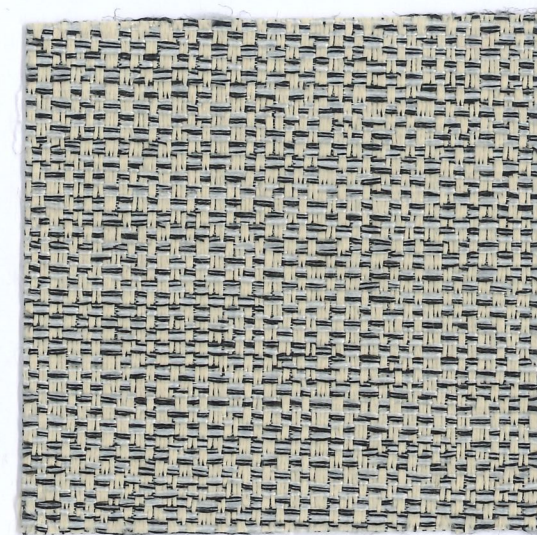
**Reibechtheit / Rub fastness**  
dry 4 - 5, wet 4 - 5, EN ISO 105-X12

**Brandnormen / Fire standards**  
EN 1021-1/2  
BS 5852-0/1  
California TB 117, Class 1

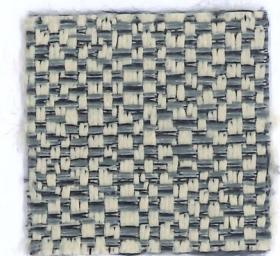
**Pflege / Care**



# Natura



CX1060-076



CX1060-075



CX1060-073



CX1060-071



CX1060-074



CX1060-020



CX1060-072



CX1060-040



CX1060-070



CX1060-021





CX1060-060



CX1060-081



CX1060-061



CX1060-010



CX1060-011



CX1060-082



CX1060-080



CX1060-022



CX1060-023



CX1060-025



CX1060-051



CX1060-050



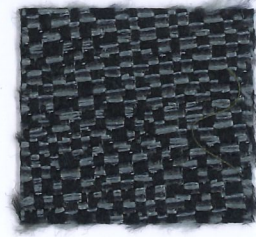
CX1060-024



CX1060-052



CX1060-084



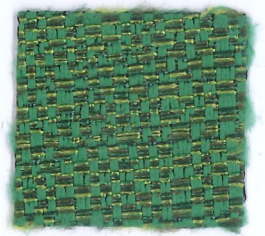
CX1060-092



CX1060-085



CX1060-091



CX1060-030



CX1060-083



CX1060-093

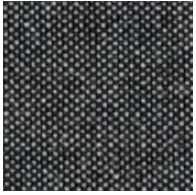


CX1060-099

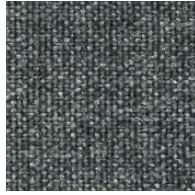
Remix 3

**kvadrat**





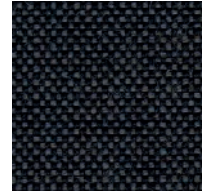
152



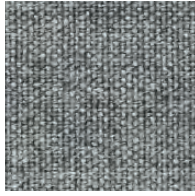
163



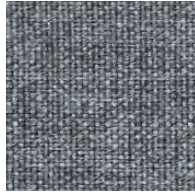
276



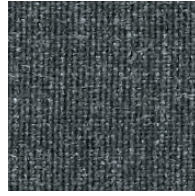
286



133



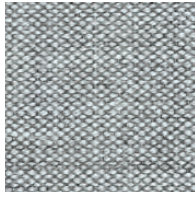
143



173



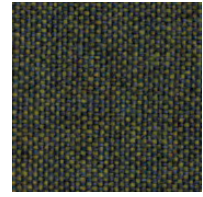
113



123



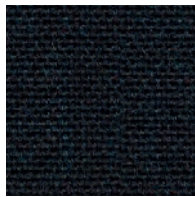
183



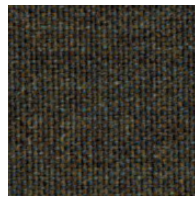
842



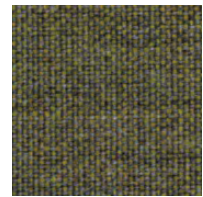
906



196



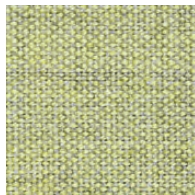
954



962



912



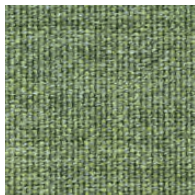
923



412



982



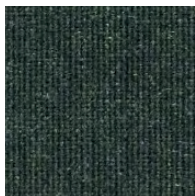
933



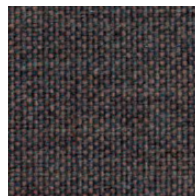
942



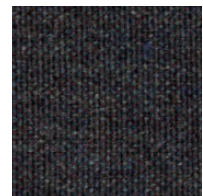
996



973

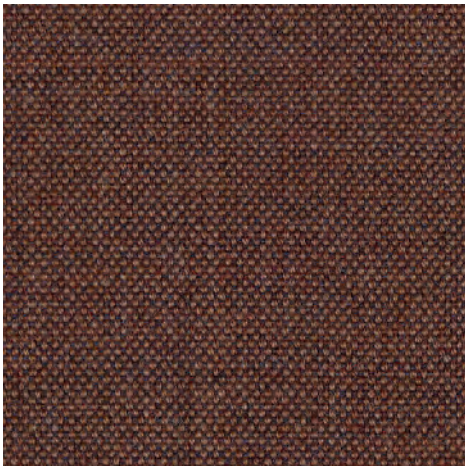


672

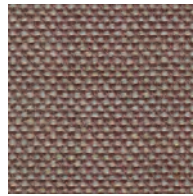


362

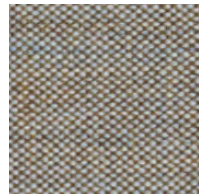
Remix 3



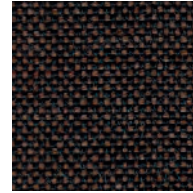
346



326



242



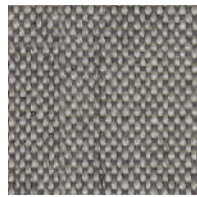
356



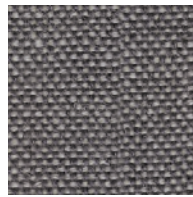
233



223



126



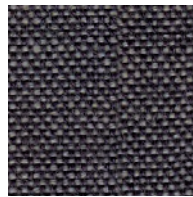
136



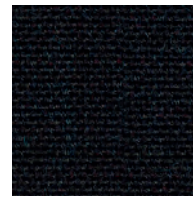
393



682



266



296



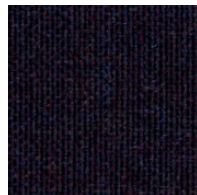
406



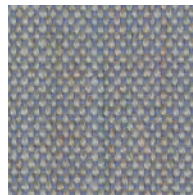
686



252



692



606



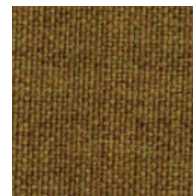
433



783



383

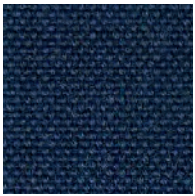


422



452

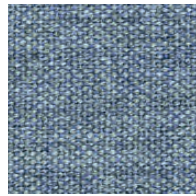




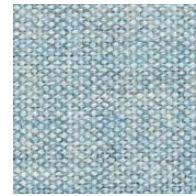
866



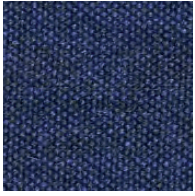
836



733



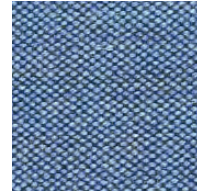
823



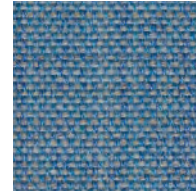
773



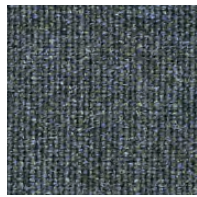
796



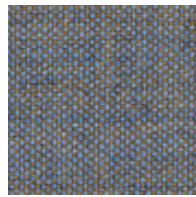
743



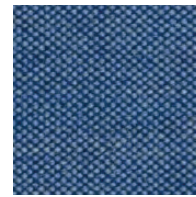
816



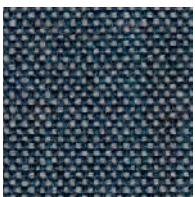
753



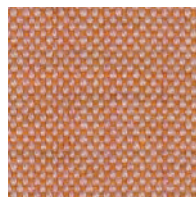
722



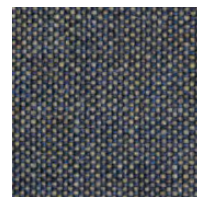
762



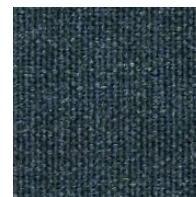
716



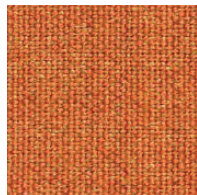
516



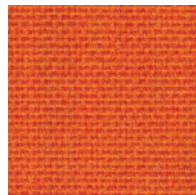
852



873



543



536



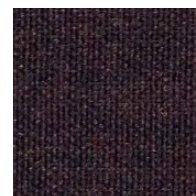
632



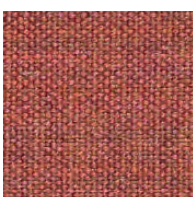
443



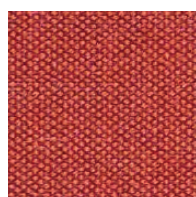
612



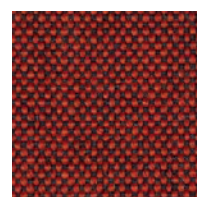
373



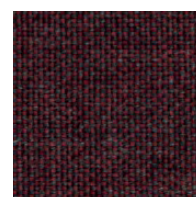
653



643



566



662

## Remix 3

Designed by Giulio Ridolfo

## DK

**Anvendelse** Kontorer, hoteller, institutioner, private indretninger. Stor slidstyrke.

**Beskrivelse** 90% ny uld, kamgarn, 10% nylon. Bredder ca. 140 cm. Vægt ca. 420 g/lbm. Materialefarvet. Nuanceforskelle kan forekomme.

**Ægkant** ↔

**Slidstyrke:** Ca. 100.000 slidbevægelser efter Martindale metoden EN ISO 12947. **Lysægted** (ISO) 5-7. **Pilling** (EN ISO) 4. **Gnidægted** (ISO) tør 4-5, våd 3-5. **Lydabsorption** (EN ISO 354) 0.55/Class D (fladt), 0.80/Class B (foldet). **Airflow** 465 Pa s/m. **Flammesikring:** AS/NZS 1530.3. AS/NZS 3837 Class 2. ASTM E84 class A. BS 5852 Crib 5 med flammesikring. BS 5852 ignition source 3. BS 5852 part 1. EN 1021-1/2. GB 50222 B1 med flammesikring. IMO FTP Code 2010:Part 7 med flammesikring. IMO FTP Code 2010:Part 8. NF D 60 013. NFPA 260. SN 198 898 5.3 med flammesikring. UNI 9175 11M. US Cal. Bull. 117-2013. ÖNORM B1 / Q1. (Kopi af testrapport kan rekvireres).

**Vedligeholdelse** Se ISO symboler.

## UK/US

**Application** Offices, hotels, institutions, domestic use. Great durability.

**Description** 90% new wool, worsted, 10% nylon. Width app. 55 inches (140 cm). Weight app. 13.5 oz/ly (420 g/lin.m). Material dyed. Colour differences may occur.

**Selvedge/Direction** ↔

**Abrasion:** App. 100,000 rubs acc. to the Martindale method EN ISO 12947. **Lightfastness** (ISO) 5-7. **Pilling** (EN ISO) 4. **Fastness to rubbing** (ISO) dry 4-5, wet 3-5. **Sound absorption** (EN ISO 354) 0.55/Class D (flat), 0.80/Class B (waved). **Airflow** 465 Pa s/m. **Flame resistance:** AS/NZS 1530.3. AS/NZS 3837 Class 2. ASTM E84 class A. BS 5852 Crib 5 with treatment. BS 5852 ignition source 3. BS 5852 part 1. EN 1021-1/2. GB 50222 B1 with treatment. IMO FTP Code 2010:Part 7 with treatment. IMO FTP Code 2010:Part 8. NF D 60 013. NFPA 260. SN 198 898 5.3 with treatment. UNI 9175 11M. US Cal. Bull. 117-2013. ÖNORM B1 / Q1. (Copy of test report available).

**Care** Please see the ISO symbols.

## DE

**Anwendungsbereich** Büros, Hotels, Objectbereich, privaten Wohnbereich. Hohe Strapazierfähigkeit.

**Beschreibung** 90% Schurwolle, Kammgarn, 10% Nylon. Breite ca. 140 cm. Gewicht ca. 420 g/lfd.m. Materialgefärbt. Farbunterschiede können vorkommen.

**Webkant** ↔

**Scheuerfestigkeit:** Ca. 100.000 Scheuerhübe gemäss der Martindale Methode EN ISO 12947. **Lichtechtheit** (ISO) 5-7. **Pilling** (EN ISO) 4. **Reibechtheit** (ISO) trocken 4-5, nass 3-5. **Schallabsorption** (EN ISO 354) 0.55/Class D (glatt), 0.80/Class B (gefaltet). **Airflow** 465 Pa s/m. **Flammenschutz:** AS/NZS 1530.3. AS/NZS 3837 Class 2. ASTM E84 class A. BS 5852 Crib 5 mit Ausrüstung. BS 5852 ignition source 3. BS 5852 part 1. EN 1021-1/2. GB 50222 B1 mit Ausrüstung. IMO FTP Code 2010:Part 7 mit Ausrüstung. IMO FTP Code 2010:Part 8. NF D 60 013. NFPA 260. SN 198 898 5.3 mit Ausrüstung. UNI 9175 11M. US Cal. Bull. 117-2013. ÖNORM B1 / Q1. (Kopie von Prüfungsbericht verfügbar).

**Pflege** Siehe ISO Pflegesymbole.

## NL

**Toepassing** Kantoren, hotels, instellingen, de privéfeer. Uitstekende slijtvastheid.

**Omschrijving** 90% scheerwol, kamgaren, 10% nylon. Breedte ca. 140 cm. Gewicht ca. 420 g/str. m. Materiaalgeverfd. Kleurverschillen kunnen optreden.

**Zelfkant** ↔

**Slijtvastheid:** Ca. 100.000 toeren Martindale EN ISO 12947. **Lichtechtheid** (ISO) 5-7. **Pilling** (EN ISO) 4. **Wrijftechtheid** (ISO) droge 4-5, natte 3-5. **Geluidsabsorptie** (EN ISO 354) 0.55/Class D (vlak), 0.80/Class B (geplooid). **Airflow** 465 Pa s/m. **Brandwerendheid:** AS/NZS 1530.3. AS/NZS 3837 Class 2. ASTM E84 class A. BS 5852 Crib 5 met behandeling. BS 5852 ignition source 3. BS 5852 part 1. EN 1021-1/2. GB 50222 B1 with treatment. IMO FTP Code 2010:Part 7 met behandeling. IMO FTP Code 2010:Part 8. NF D 60 013. NFPA 260. SN 198 898 5.3 met behandeling. UNI 9175 11M. US Cal. Bull. 117-2013. ÖNORM B1 / Q1. (Op aanvraag sturen wij U graag een kopie van het testrapport toe).

**Onderhoud** Zie de ISO symbolen.

## FR

**Domaine d'utilisation** Tissu d'ameublement pour aménagement privé et public. Grande résistance.

**Description** 90% laine vierge, peignée, 10% nylon. Largeur env. 140 cm. Poids env. 420 g/m lg. Teinture en bourre. Ecart de coloris possibles.

**Lisière** ↔

**Résistance à l'abrasion:** Env. 100.000 révolutions selon le procédé Martindale EN ISO 12947. **Résistance à la lumière** (ISO) 5-7. **Boulochage** (EN ISO) 4. **Résistance au frottement** (ISO) sec 4-5, mouillé 3-5. **Absorption acoustique** (EN ISO 354) 0.55/Class D (à plat), 0.80/Class B (plié). **Airflow** 465 Pa s/m. **Normes au feu:** AS/NZS 1530.3. AS/NZS 3837 Class 2. ASTM E84 class A. BS 5852 Crib 5 avec traitement. BS 5852 ignition source 3. BS 5852 part 1. EN 1021-1/2. GB 50222 B1 avec traitement. IMO FTP Code 2010:Part 7 avec traitement. IMO FTP Code 2010:Part 8. NF D 60 013. NFPA 260. SN 198 898 5.3 avec traitement. UNI 9175 11M. US Cal. Bull. 117-2013. ÖNORM B1 / Q1. (La copie du compte rendu des tests est disponible sur demande).

**Entretien** Voir les symboles ISO.

## IT

**Destinazione d'uso** Rivestimento per imbottiti casa e contract. Alta resistenza all'abrasione. **Caratteristiche** 90% lana vergine, pettinata, 10% nylon. Altezza circa 140 cm. Peso circa 420 gr/ml. Tinto in fiocco. Possibili differenze per colore.

**Cimosa** ↔

**Abrasion:** Circa 100.000 cicli/metodo Martindale EN ISO 12947. **Resistenza alla luce** (ISO) 5-7. **Pilling** (EN ISO) 4. **Resistenza allo sfregamento** (ISO) condizione a secco 4-5, condizione umido 3-5. **Assorbimento acustico** (EN ISO 354) 0.55/Class D (tenda a pannello (tesa)), 0.80/Class B (tenda arricciata). **Airflow** 465 Pa s/m. **Ignifugazione:** AS/NZS 1530.3. AS/NZS 3837 Class 2. ASTM E84 class A. BS 5852 Crib 5 trattato ignifugo. BS 5852 ignition source 3. BS 5852 part 1. EN 1021-1/2. GB 50222 B1 trattato ignifugo. IMO FTP Code 2010:Part 7 trattato ignifugo. IMO FTP Code 2010:Part 8. NF D 60 013. NFPA 260. SN 198 898 5.3 trattato ignifugo. UNI 9175 11M. US Cal. Bull. 117-2013. ÖNORM B1 / Q1. (Disponibile copia del test).

**Manutenzione** Per favore seguire simboli ISO.

## ES

**Aplicación** Adecuado, para el uso en oficinas, hoteles, instituciones y hogares. Gran resistencia al desgaste.

**Descripción** 90% lana virgen, peinada, 10% nilón. Anchura aprox. 140 cm. Peso aprox. 420 gr/ml. Teñido en material. Posibles variaciones de color.

**Filo** ↔

**Resistencia al desgaste:** Aprox. 100.000 ciclos según el método Martindale EN ISO 12947. **Resistencia a la luz** (ISO) 5-7. **Relleño** (EN ISO) 4. **Solidez al frotamiento** (ISO) seco 4-5, mojado 3-5. **Absorción acústica** (EN ISO 354) 0.55/Class D (estor), 0.80/Class B (cortina). **Airflow** 465 Pa s/m. **Resistencia al fuego:** AS/NZS 1530.3. AS/NZS 3837 Class 2. ASTM E84 class A. BS 5852 Crib 5 con tratamiento. BS 5852 ignition source 3. BS 5852 part 1. EN 1021-1/2. GB 50222 B1 con tratamiento. IMO FTP Code 2010:Part 7 con tratamiento. IMO FTP Code 2010:Part 8. NF D 60 013. NFPA 260. SN 198 898 5.3 con tratamiento. UNI 9175 11M. US Cal. Bull. 117-2013. ÖNORM B1 / Q1. (Copia del informe de ensayos disponible).

**Limpieza** Consulte los símbolos ISO.

## JP

**用途** オフィス、ホテル、各種施設、住宅インテリア。耐耗性大。

**詳細** 90% ニューウール ウーステッド。10% ナイロン。幅:140 cm。重量:1mあたり約420 g。布染め。色彩ニューアンスに多少の違いが生じる可能性あり。

**耳、ふち、** ↔**テスト:**

**磨耗:** マーチンデール法により摩擦お運動約100.000回。EN ISO 12947。 **色褪せ保証:** (ISO) 5-7。 **ピリング** (EN ISO) 4。 **摩擦保証:** (ISO) 乾燥状態 4-5、濡れた状態 3-5。 **吸音率** (EN ISO 354) 0.55/Class D (パネル状)、0.80/Class B (ドレープ状)。 **気流:** 465 Pa s/m。 **耐火性:** AS/NZS 1530.3。 AS/NZS 3837 Class 2。 ASTM E84 class A。 特殊耐火処理を行うことにより、BS 5852 Crib 5 に到達可能。 BS 5852 ignition source 3。 BS 5852 part 1。 EN 1021-1/2。 特殊耐火処理を行うことにより、GB 50222 B1 に到達可能。 特殊耐火処理を行うことにより、IMO FTP Code 2010:Part 7 に到達可能。 IMO FTP Code 2010:Part 8。 NF D 60 013。 NFPA 260。 特殊耐火処理を行うことにより、SN 198 898 5.3 に到達可能。 UNI 9175 11M。 US Cal. Bull. 117-2013。 ÖNORM B1 / Q1。 (テストレポートのコピー入手可能。)

**手入れ**

ISO シンボル参照。

## CN

**适用范围** 办公室, 宾馆酒店, 公共设施, 居家使用。耐耗性大。

**成分** 90% 新羊毛, 精纺, 10% 尼龙。幅宽约55英寸(140cm)。重量约420克/延米。原材料染色面料。颜色可能稍有色差。

**图纹方向** ↔

**马丁代尔法**约100,000转。EN ISO 12947。 **光照色牢度** (ISO) 5-7。 **起毛起球** (EN ISO) 4。 **摩擦色牢度** (ISO) 干燥4-5, 湿3-5。 **吸声系数** (EN ISO 354) 0.55/Class D (隔断帘), 0.80/Class B (一般窗帘使用)。 **气流阻力** 465 Pa s/m。 **阻燃性:** AS/NZS 1530.3。 AS/NZS 3837 Class 2。 ASTM E84 class A。 特别耐火处理时BS 5852 Crib 5 可以满足。 BS 5852 ignition source 3。 BS 5852 part 1。 EN 1021-1/2。 特别耐火处理时GB 50222 B1 可以满足。 特别耐火处理时IMO FTP Code 2010:Part 7 可以满足。 IMO FTP Code 2010:Part 8。 NF D 60 013。 NFPA 260。 特别耐火处理时SN 198 898 5.3 可以满足。 UNI 9175 11M。 US Cal. Bull. 117-2013。 ÖNORM B1 / Q1。 (可提供测试报告副本)。

**维护** 请参照ISO标志。



10 year warranty



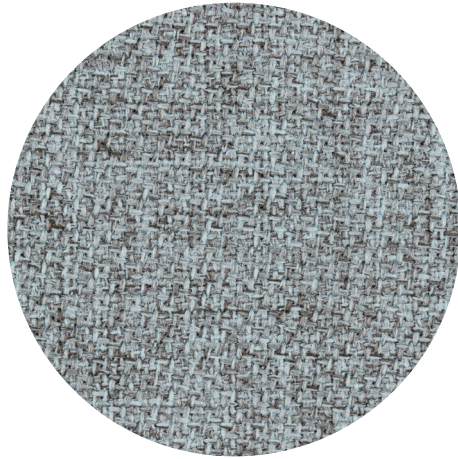
Quality and environmental system accreditation according to ISO 9001 and ISO 14001.

\*ACT® Registered Certification Marks

Encouraging the use of sustainable fibres. Durable and high quality. Hazardous substances restricted.

Contact and further information [www.kvadrat.dk](http://www.kvadrat.dk)

US contact info: 1-800-620-9309



## STEP MELANGE

by Gabriel

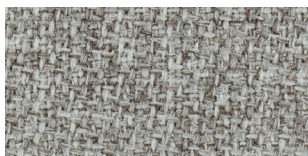




61104



61286



60345



61287



61288



60004



61149



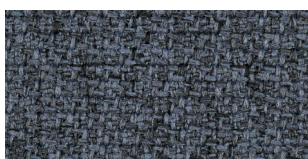
61293



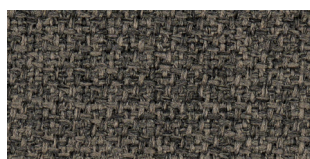
61289



60011



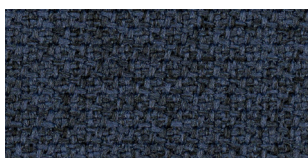
66152



61152



61291



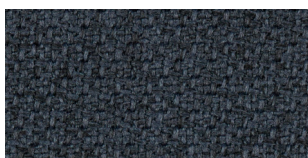
66148



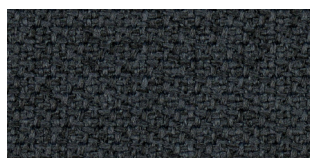
60092



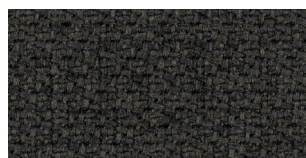
60090



66265

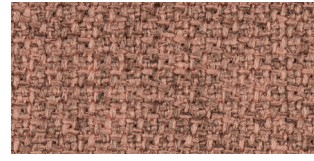


66019



60021

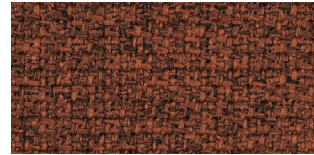




64267



62143



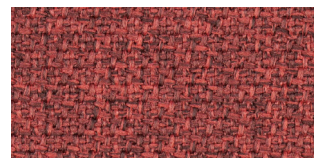
61151



63136



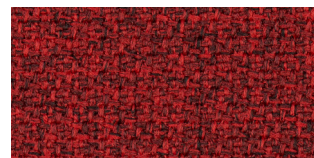
63139



64178



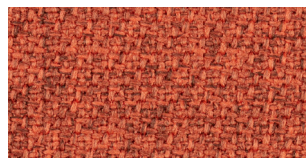
63082



64179



62144



63138



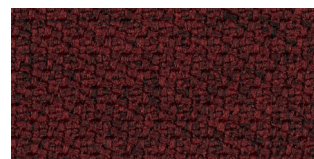
64013



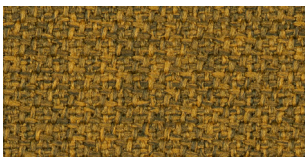
62146



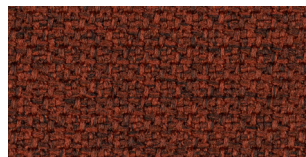
63137



64159



62057



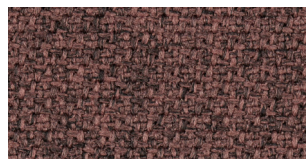
63075



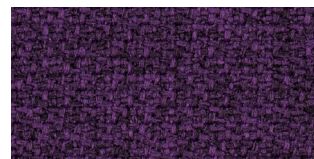
65047



61103

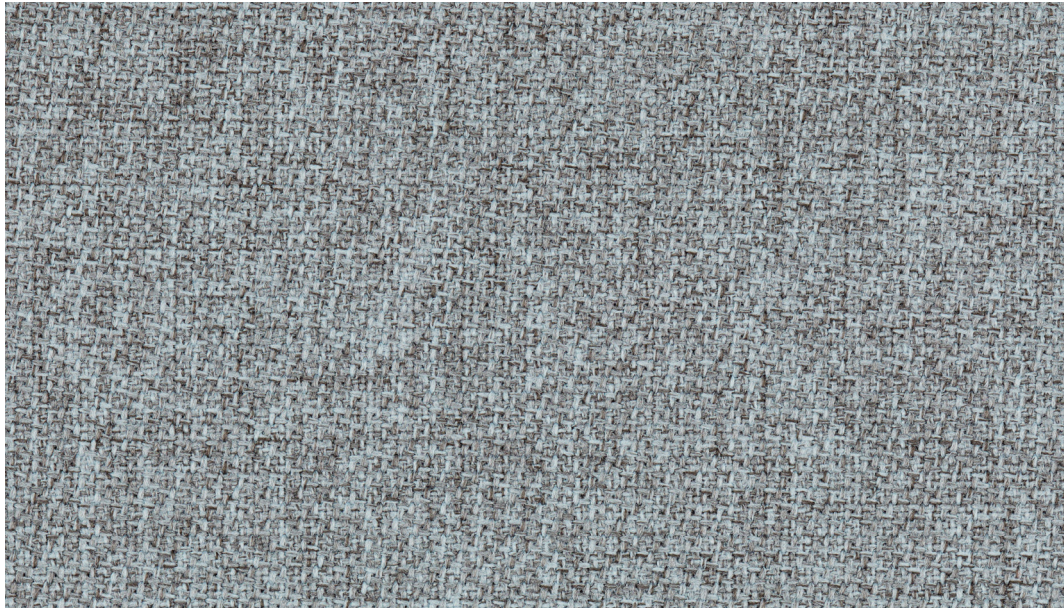


64270

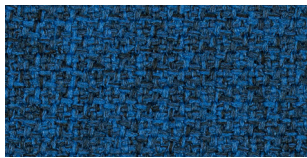


65023

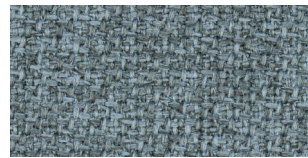




60346



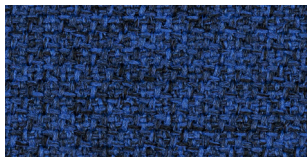
66151



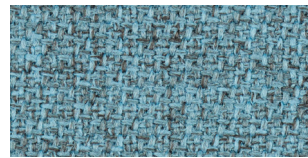
67004



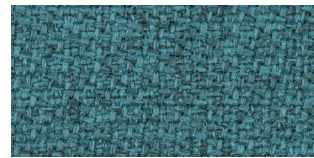
60346



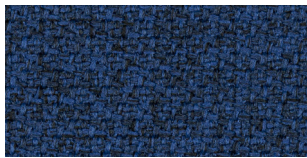
66150



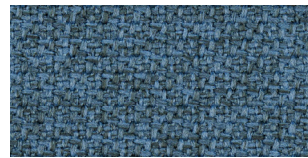
67135



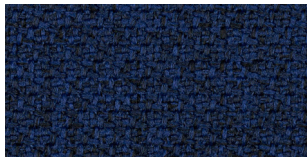
67072



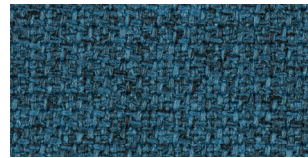
66149



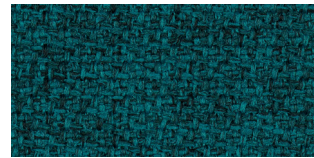
66018



65018



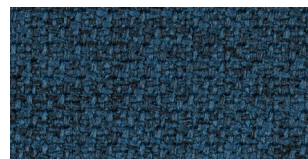
66263



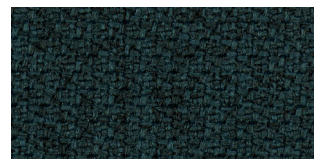
67007



65011

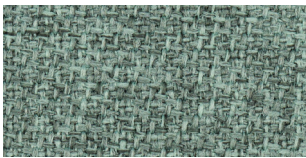


66264



68158

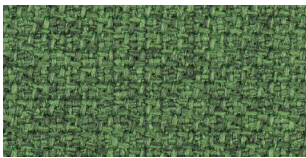




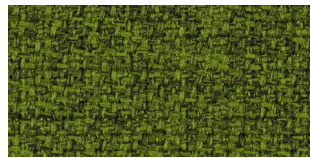
68118



68163



68159



68162



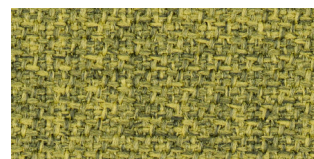
68119



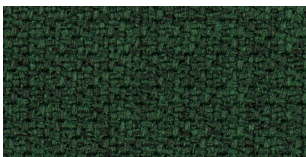
68120



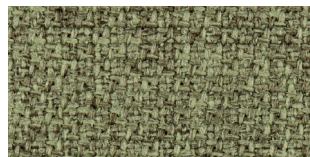
68298



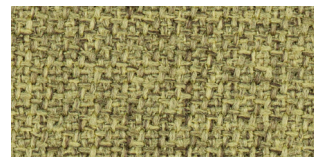
62073



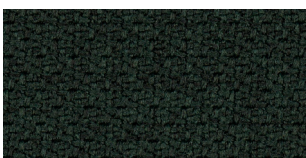
68161



68299



68301



68121



68300



68165

# STEP MELANGE

Specifications: [www.gabriel.dk](http://www.gabriel.dk)

Please be aware that the PDF colour shades can appear different from the real fabric colours.  
We advise you to request actual fabric samples before ordering.



# Poseidon

1306

upholstery

20 colours

Named for the Greek god of the sea, Poseidon transforms ocean waste plastics into an elegant and substantial wool-like fabric featuring the rich colour complexity of a traditional tweed.

CLEAN IMPACT **TEXTILES**™

OCEAN WASTE



BEACHROCK  
1295



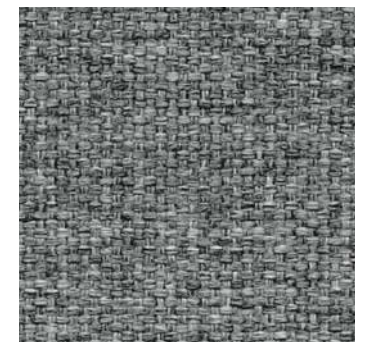
CORALLINE  
1294



TRIGGERFISH  
1281



SEA SPRAY  
1290



NARWHAL  
1298



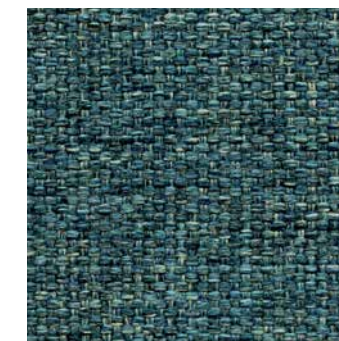
SARGASSUM  
1296



RED ALGAE  
1285



ECOSYSTEM  
1286



SURF  
1289



MANATEE  
1299



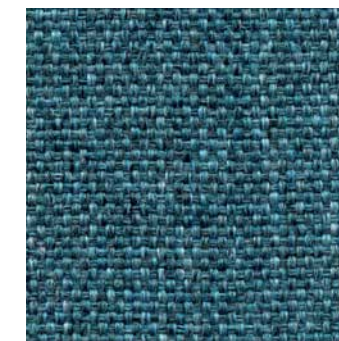
ARCHIPELAGO  
1283



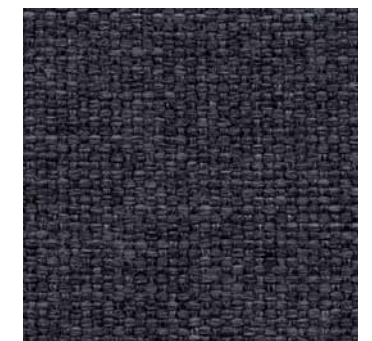
KING CRAB  
1282



KELP FOREST  
1287



AQUATIC  
1291



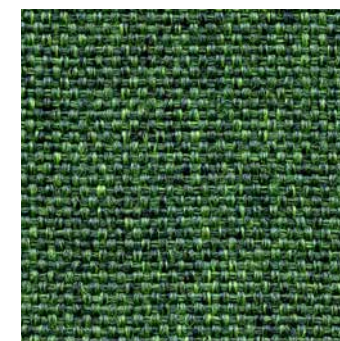
DEEP BLUE  
1293



JAVA SEA  
1297



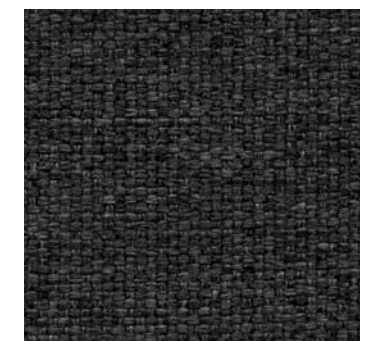
BRITTLE STAR  
1284



TIDEPOOL  
1288



SAILFISH  
1292



ORCA  
1300

euoinfo@duvaltex.com  
www.duvaltex.com/europe

duvaltex



# Poseidon

1306

upholstery

CLEAN IMPACT **TEXTILES™**

OCEAN WASTE

duvaltex

# Poseidon

1306

CLEAN IMPACT **TEXTILES™**

Named for the Greek god of the sea, Poseidon transforms ocean waste plastics into an elegant and substantial wool-like fabric featuring the rich colour complexity of a traditional tweed.

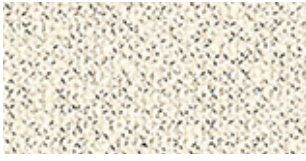
EN	FR	DE
<b>Application</b> Upholstery	<b>Application</b> Recouvrement de chaise	<b>Anwendung</b> Bezugsstoff
<b>Composition</b> 100% Post-consumer recycled polyester including Ocean Waste	<b>Composition</b> 100 % polyester recyclé post-consommation avec plastiques océaniques	<b>Zusammensetzung</b> 100% Post-consumer recyceltes Polyester aus Meeresabfällen
<b>Sustainability</b> Ocean Waste CLEAN IMPACT TEXTILES™	<b>Environnement</b> Ocean Waste CLEAN IMPACT TEXTILES™	<b>Umweltfreundlich</b> Ocean Waste CLEAN IMPACT TEXTILES™
<b>Weight</b> 400 g/m <sup>2</sup> (± 5%)	<b>Poids</b> 400 g/m <sup>2</sup> (± 5 %)	<b>Gewicht</b> 400 g/m <sup>2</sup> (± 5%)
<b>Width</b> 140 cm minimum usable	<b>Largeur</b> 140 cm minimum utilisable	<b>Breite</b> 140 cm nutzbare Breite
<b>Abrasion</b> 100 000 Martindale cycles	<b>Abrasion</b> 100 000 cycles Martindale	<b>Scheuerfestigkeit</b> 100 000 Scheuertouren Martindale
<b>Light Fastness</b> 5-6 (ISO105-B02)	<b>Résistance à la lumière</b> 5-6 (ISO105-B02)	<b>Lichtechtheit</b> 5-6 (ISO105-B02)
<b>Rubbing Fastness</b> Wet: 4-5 / Dry: 4 (ISO105-X12)	<b>Résistance au frottement et au dégorge ment</b> Mouillé : 4-5 / Sec : 4 (ISO105-X12)	<b>Reibechtheit</b> Nass: 4-5 / Trocken: 4 (ISO105-X12)
<b>Flammability</b> EN 1021-1 Cigarette EN 1021-2 Match BS 7176 Low Hazard Flammability performance may vary depending on the substrate used.	<b>Inflammabilité</b> EN 1021-1 Cigarette EN 1021-2 Match BS 7176 Low Hazard Les performances d'inflammabilité peuvent varier en fonction du substrat utilisé.	<b>Feuersicherung</b> EN 1021-1 Zigarette EN 1021-2 Streichholz BS 7176 Low Hazard Die Schwerentflammbarkeit hängt von den verwendeten Komponenten ab.
<b>Cleaning</b> Clean with water based cleaning agents, foam or pure, water free solvents. Vacuuming or light brushing is recommended to prevent dust and soil buildup. May also be disinfected with hydrogen peroxide, alcohol, and quaternary ammonium (quat) based cleaners.	<b>Nettoyage</b> Nettoyer avec des produits de nettoyage à base d'eau ou des solvants purs sans eau. Il est recommandé d'aspirer ou de brosser légèrement pour éviter l'accumulation de poussière et de saleté. Peut également être désinfecté avec du peroxyde d'hydrogène, de l'alcool et des nettoyeurs à base d'ammonium quaternaire (quat).	<b>Reinigung</b> Reinigung mit wasserbasiertem Reinigungsmittel, speziellem Polsterschaum oder wasserfreiem Lösungsmittel. Regelmäßig absaugen oder leicht bürsten um Schmutzaufbau zu verhindern. Kann auch mit Wasserstoffperoxid, Alkohol und quartären Ammonium (quat) basierten Reinigern desinfiziert werden.
<b>Disclaimer</b> Shade variation within commercial tolerance can occur between individual colour batches. Abrasion testing produces variable results even when using the same test sample. Our fabrics are tested numerous times on separate occasions using different test samples to establish an average, realistic result. Please note that seam performance is dependent on seam construction and needle and thread type. Application testing of this product is recommended.	<b>Avertissement</b> Une variation de couleur dans les limites de la tolérance commerciale peut se produire entre des lots de couleurs individuels. Les résultats au test d'abrasion peuvent varier pour un même échantillon. Nos tissus sont testés à plusieurs reprises, à l'aide de différents échantillons pour un résultat moyen plus représentatif. Veuillez noter que la performance dépend de la construction des coutures ainsi que du type d'aiguille et de fil utilisé. Un test d'application de ce produit est recommandé.	<b>Haftungsausschluss</b> Handelsübliche Farbabweichungen können zwischen einzelnen Chargen auftreten. Die Scheuerfestigkeitsprüfung kann selbst bei Verwendung derselben Testprobe zu schwankenden Ergebnissen führen. Daher werden unsere Stoffe mehrfach und verschiedenen Proben getestet um ein durchschnittliches und realistisches Ergebnis zu erzielen. Bitte beachten Sie, dass die Nahtleistung von Nahtaufbau, Nadel und verwendetem Garn abhängt. Ein Anwendungstest wird daher empfohlen.



## **GRAIN**

by Gabriel

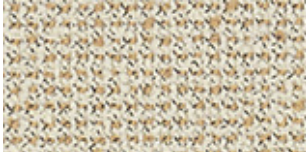




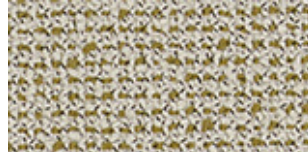
61250



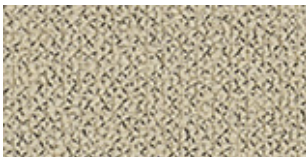
61229



61251



61247



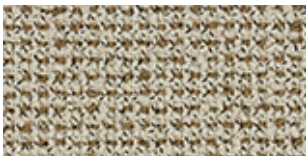
61252



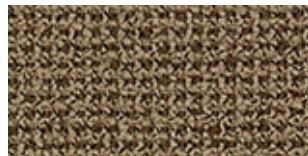
61230



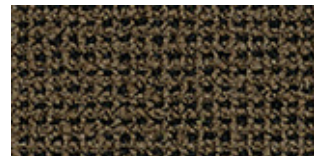
61146



61253



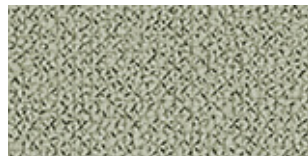
61248



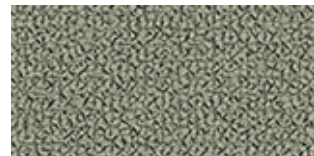
61249



60300



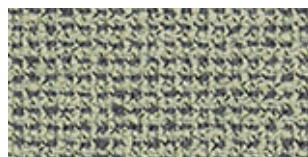
60302



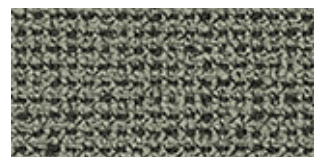
60301



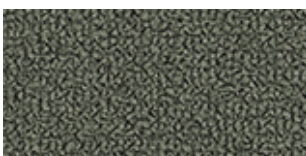
60320



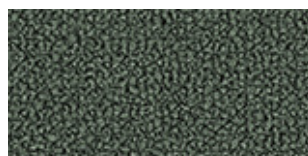
60322



60321



60303



60324



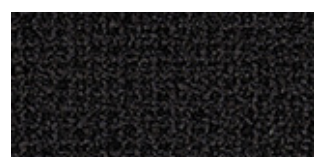
60999



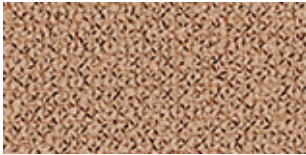
60323



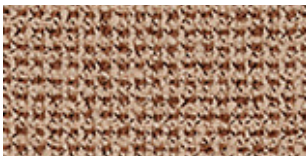
60325



60328



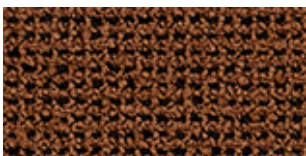
64249



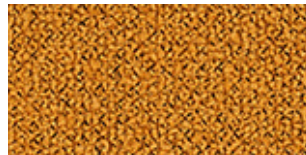
64250



61256



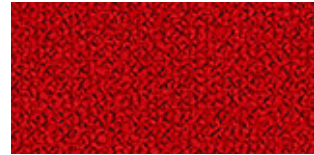
61254



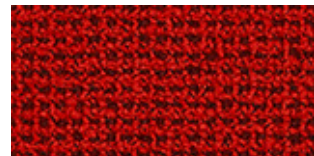
62016



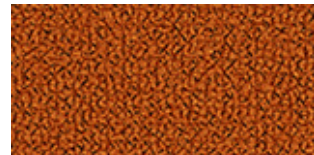
62121



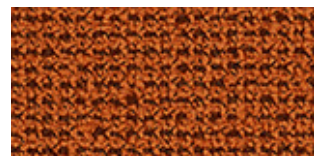
64041



64251

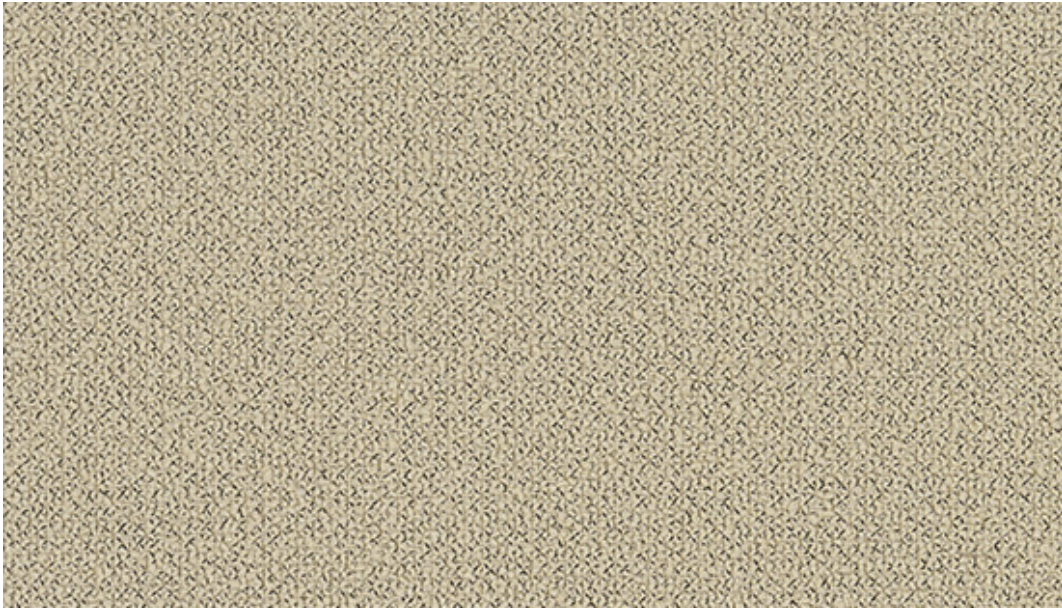


63117

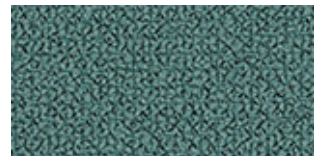


63118

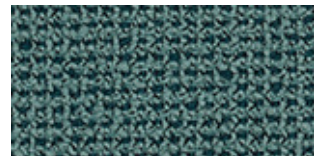




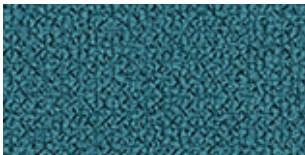
61252



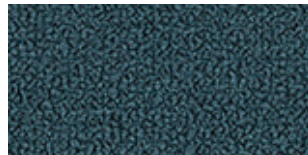
66236



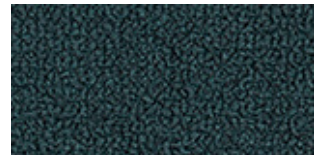
66237



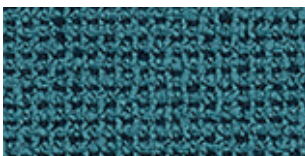
66234



66216



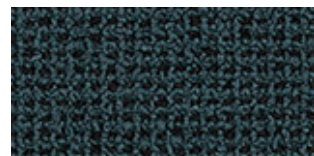
66232



66235

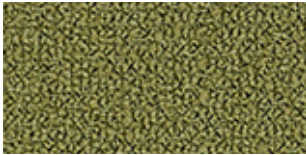


66231

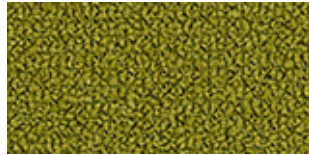


66233

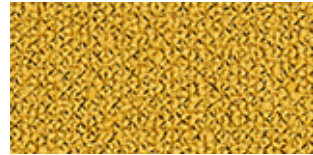




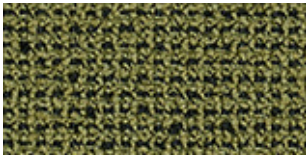
68243



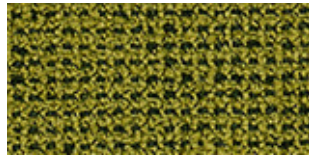
68257



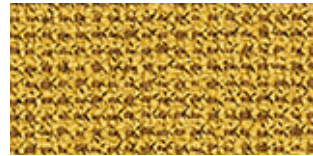
62122



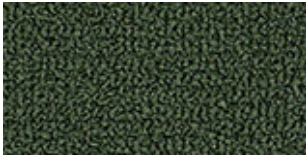
68259



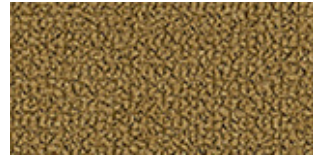
68258



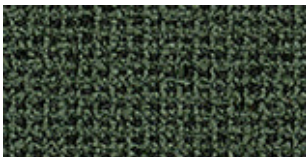
62123



68155



61037



68260






61255

# GRAIN

Grain specifications: [www.gabriel.dk](http://www.gabriel.dk)

Please be aware that the PDF colour shades can appear different from the real fabric colours.  
We advise you to request actual fabric samples before ordering.

TECHNISCHE DATEN / CARACTERISTIQUES TECHNIQUES / TECHNICAL PROPERTIES

		decovin® nappa	decovin® nappa FR ✱	decovin® nappa B1/M1 ✱
Zusammensetzung composition	Gesamt / totale / total Oberfläche / surface Träger / support	73% PVC, 26% CO, 1% PU 100% PVC 100% CO	72% PVC, 27% CO, 1% PU 100% PVC 100% CO	85% PVC, 15% CO 100% PVC 100% CO
Ausrüstung traitement treatment		Micro-perforation	desinfizierbar désinfectable disinfectable	Zertifizierte Desinfektionsmittel- beständigkeit / certifié résistant aux produits désinfectants / certified resistance to disinfectants
Breite / largeur / width	cm	ca./env./approx. 150	ca./env./approx. 150	ca./env./approx. 137
Rollen / rouleaux / rolls	m	ca./env./approx. 30	ca./env./approx. 30	ca./env./approx. 30
Gewicht / poids / weight	g/m²	780 ± 60	740 ± 40	780 ± 50
Gesamtdicke / épaisseur totale / total thickness	mm	1.7 ± 0.2	1.45 ± 0.2	1.3 ± 0.2
Einsatzbereich domaines d'utilisations field of application				
Abrieb Martindale abrasion Martindale	trocken / sec / dry nass / humide / wet	70000 20000	100000 25000	100000
Reibechtheit (Crockmeter) résistance de frottement resistance to rubbing	trocken / sec / dry nass / humide / wet	4-5 4-5	4-5 4-5	> 4-5 > 4
Lichtechtheit / résistance à la lumière / light fastness		> 5	> 5	> 5
Höchstzugkraft résist. à la traction resist. to tensile strength	Länge / longueur / length Breite / largeur / width	> 250 N > 200 N	> 250 N > 200 N	> 240 N > 150 N
Weiterreissfestigkeit résistance déchirement laceration resistance	Länge / longueur / length Breite / largeur / width	> 25 N > 30 N	> 20 N > 20 N	> 15 N > 10 N
Stichausreissfestigkeit / résistance à la couture / seamslippage resistance		> 30 N > 30 N	> 30 N > 30 N	> 30 N > 30 N
Brandklassifizierung résistance au feu classific. flame retardent		EN 1021 Teil 1	Ö-Norm: B1/Q1 EN 1021 1+2 SN 198898: 5.2 BS 5852 part 0+1, Crib 5 UNI VF 9175 class 1 IMO FTPC P8	NFP 92503: M1 DIN 4102: B1 Ö-Norm: B1/Q1 EN 1021 1+2 SN 198898: 5.3 BS 5852 part 0+1, Crib 5 UNI VF 9175 class 1 IMO FTPC P8
Ab Lager lieferbar livrable de stock available from stock		Alle Farben toutes les coloris all colours	In den Farben / dans les colo- ris / in colour: 17100FR, 17104FR, 17106FR, 17107FR, 17109FR, 17111FR, 17113FR, 17114FR, 17118FR, 17123FR, 17125FR, 17230FR	In den Farben / dans les coloris / in colour: 17100M1, 17105M1, 17107M1, 17112M1, 17113M1, 17114M1, 17118M1, 17119M1, 17120M1, 17122M1, 17123M1, 17125M1, 17126M1, 17234M1, 17235M1, 17236M1 weitere Farben in der Kollektion decovin® B1/M1, autres coloris dans la collection decovin® B1/M1, more colours available in the collection decovin® B1/M1

Alle Daten sind Mittelwerte. Änderungen vorbehalten. | Toutes les données sont des valeurs moyennes.  
Sous réserve de modifications. | All the above data represents average values. Subject to changes.

**Verarbeitung / façonnage / workability:** Problemlose Verarbeitung nach allen in der Polstermöbelindustrie üblichen Verfahren (nähen, heften, nageln, HF schweißen). Keine lösungsmittelhaltigen Kleber verwenden. | Se prête sans aucun problème à tous les procédés de façonnage en usage dans l'industrie de la tapisserie sur meubles (couture, agrafage, clouage, soudure HF). Ne pas employer de colle contenant un solvant. | As easy to work as any other upholstery material. It can be sewn, stapled, glued, tacked and HF-welded. No solvent based adhesives are to be used!

**Reinigung / entretien / cleaning:** Regelmässig feucht mit milder Seifenlauge abwischen (weiche Bürste, Baumwolltuch). Bei stärkerer Verschmutzung Feinwaschmittel beifügen. Keine lösungsmittelhaltige, scheuernde, fett- und ölhaltige Reiniger/Pfleger verwenden. Kaffee, Tinte, etc. sofort beseitigen. Textilabfärbungen (Bsp. Jeans oder andere nicht farbechte Materialien) sind von jeder Gewährleistung ausgeschlossen.

Essuyer régulièrement avec une brosse douce ou un chiffon de coton humidifiés d'eau légèrement savonneuse. En cas de saleté récalcitrante, ajouter à l'eau une lessive spéciale linge délicat. Ne pas utiliser de produit de nettoyage ou d'entretien contenant un solvant, de la graisse ou de l'huile. Nettoyer immédiatement les taches de café, d'encre, etc. Les taches de textile déteint (causées par ex. par des jeans ou d'autres matières qui ne sont pas traitées grand teint) sont exclues de la garantie. | Wipe regularly (with a soft brush or cotton cloth) using a mild soap water solution. When there are heavier stains add a mild detergent. Do not use cleaners or care products which are abrasive or contain solvents, fat or oil. Immediately remove coffee or ink etc. Rub off from textiles (e.g. jeans or other materials which are not color fast) is excluded from any warranty.

**decovin®**  
**nappa**



# decovin® nappa

## Softigweiche Nappaqualität – mit Mikroperforation für den hohen Sitzkomfort

Dieses synthetische Leder mit seiner klassisch, zeitlosen Ledernarbung, seiner behaglichen Weichheit und seinem angenehmen Touché bietet die besten Eigenschaften für den Bezug von Stühlen, Bänken, Hockern, Sofas und allen Arten von Innenausbauten. **decovin® nappa** «Standard» ist mikroperforiert und gewährleistet somit dank besserer Atmungsaktivität einen hohen Sitzkomfort. Für den öffentlichen Bereich wie Hotels und Restaurants gibt es **decovin® nappa FR** mit zusätzlich schwer entflammbarer Ausrüstung. **decovin® nappa B1/M1** ist für stark beanspruchte Bereiche wie Alters- und Pflegeheime das passende Produkt: sehr robust und inkontinenzbeständig, aufgrund hochwertigem Kompakt-Vinyl und erfüllt höchste Anforderungen hinsichtlich Sicherheit und Brandschutz.



## Qualité nappa très souple – avec micro perforation pour un confort exceptionnel

Avec son grain classique et intemporel, sa confortable souplesse et son incomparable toucher, ce similicuir se prête parfaitement à la tapisserie de chaises, de banquettes, de tabourets, de canapés, ainsi qu'à tout autre genre de décoration. **decovin® nappa** «Standard» est doté d'une micro perforation qui, laissant respirer la matière, lui confère un confort absolu. Pour les utilisations dans des zones publiques comme les hôtels et les restaurants, **decovin® nappa** existe en version **FR**, dotée d'un traitement ignifuge. **decovin® nappa B1/M1** est la version spécialement adaptée aux zones publiques fortement sollicitées comme les maisons de retraite et les établissements hospitaliers : très robuste grâce à son vinyl compact haut de gamme et la résistance aux incontinences, elle répond aux plus hautes exigences en matière de sécurité et protection anti-incendie.

## Soft Nappa quality – with micro perforation for high seating comfort

This synthetic leather with its classical, timeless leather grain, its cozy softness and pleasant touch has excellent properties for covering chairs, benches, stools, sofas and all kinds of interior design applications. **decovin® nappa** «standard» is micro perforated, ensuring high seating comfort due to improved breathability. For public areas such as hotels and restaurants **decovin® nappa FR** is also available with flame retardant finish. **decovin® nappa B1/M1** is the right product for heavy duty areas as retirement and nursing homes: it is very robust, due to highquality compact vinyl, incontinence resistant and meets the highest standards concerning security and fire protection.

17113 | **decovin® nappa** | nero  
17113FR | **decovin® nappa FR** | nero



17113M1 | **decovin® nappa B1/M1** | nero



	17111 17111FR ocean		17126 17126M1 aubergine		17107 17107FR 17107M1 ebene
	17124 petrol		17227 purple		17109 17109FR carmin
	17112 17112M1 anthrazit		17108 bordeaux		17122 17122M1 kirsche
	17230 17230FR platin		17106 17106FR mocca		17110 flame
	17129 grey		17105 17105M1 marone		17118 17118FR 17118M1 lachs
	17114 17114FR 17114M1 blanc		17104 17104FR sherry		17232 amber
	17322 pearl metallic		17102 caramel		17319 nuss
	17326 platino metallic		17313 cognac		17125 17125FR 17125M1 smoke
	17119 17119M1 perle		17103 mango		17235 17235M1 cappuccino
	17311 white pepper		17101 camel		17100 17100FR 17100M1 ecru
	17316 nude		17120 17120M1 sattel		17312 avocado
	17123 17123FR 17123M1 birke		17320 bronze metallic		17234 17234M1 pistache
	17236 17236M1 lava		17325 flint metallic		17117 tanne



**Serge Ferrari**

**Stamskin**  
Top

Une longévité unique  
Eine einmalige Langlebigkeit

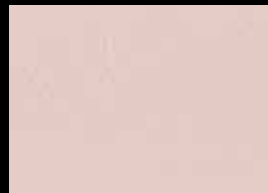




F4340-10120



F4340-5029



F4340-20293



F4340-20287



F4340-07479



F4340-20283



F4340-20299



F4340-20281



F4340-20280



F4340-07478





F4340-20290



F4340-10295



F4340-20294



F4340-20289



F4340-20288



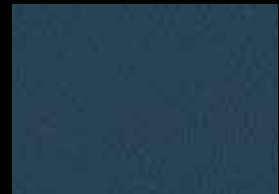
F4340-20295



F4340-20300



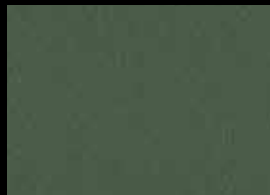
F4340-20237



F4340-20284



F4340-20291



F4340-20253



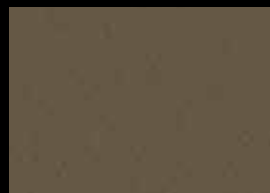
F4340-20241



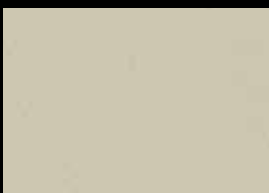
F4340-20282



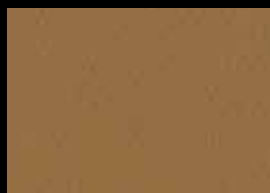
F4340-20296



F4340-20285



F4340-20279



F4340-20286



F4340-20278



F4340-20129



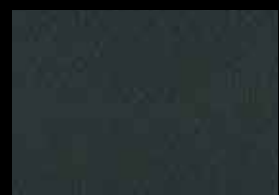
F4340-20161



F4340-07432



F4340-07445



F4340-00002



**Applications - Anwendungen**

Chaises, fauteuils et canapés - Polsterstühle, Sessel und Sofas  
Mobilier pour espaces publics - Möbel für öffentliche Bereiche



■ **Facile à utiliser** : grande flexibilité du matériau pour une finition parfaite

**Benutzerfreundlich**: Hohe Flexibilität des Materials sorgt für ein perfektes Finish

■ **Sans danger pour l'utilisateur** : sans phtalate, hautement nettoiyable et conforme aux normes de résistance au feu

**Für den Benutzer unbedenklich**: Phthalatfrei, leicht zu reinigen und erfüllt die Brandschutznormen

■ **Colorée** : une large palette de 33 couleurs neutres et vibrantes

**Farbenfroh**: eine breite Palette an 33 neutralen sowie kräftigen Farben

La qualité classique Stamskin  
Die klassische Stamskin Qualität





# Stamskin

## Top

### ■ Propriétés techniques - Technische Daten

### Normes - Normen

Description - Beschreibung	Composite multicouches - Mehrschichtverbund	
Support - Träger	Polyamide-jersey - Polyamid-Jersey	
Largeur - Breite	Approx. 140 cm - Ca. 140 cm	
Poids - Gewicht	780 g/m <sup>2</sup>	EN ISO 2286-2
Epaisseur - Dicke	1,0 - 1,2 mm	ISO 5084

### ■ Propriétés physiques - Physikalische Eigenschaften

Allongement sous charge de 125 N / 5 cm Reißdehnung bei 125 N / 5 cm	> 35 % / > 55 % (chaîne/trame) - (Kette/Schuss)	EN ISO 1421
Résistance rupture (chaîne/trame) Reißkraft (Kette/Schuss)	> 440 N / 5 cm / > 280 N / 5 cm	EN ISO 1421
Résistance déchirure (chaîne/trame) Weiterreißkraft (Kette/Schuss)	> 25 N / > 15 N	EN ISO 13937/1
Résistance abrasion (normes de cycles) Abriebfestigkeit (Scheuertouren)	> 120 000	EN ISO 5470-2 Martindale
Résistance aux pliages (pas de dommage, cycles) Knicken (Keine Beschädigung, Zyklen)	400 000	EN ISO 7854
Stabilité lumière Lichtstabilität	GS = 4 à 700 h - GS = 4 bei 700 h	ASTMG154: UVA340
Résistance moisissures Schimmelbeständigkeit	Degré 0, excellent - Stufe 0, ausgezeichnet	EN ISO 846-A
Températures extrêmes d'utilisation Maximale Anwendungstemperaturen	-20 °C / +70 °C	

### ■ Réaction au feu - Brennverhalten

Suisse - Schweiz	5,3	SN 198898 - VKF/AEAI
Italie - Italien	Classe 2 - Klasse 2	UNI 9177/87
Allemagne - Deutschland	Class K1 - Klasse K1	DIN 53438 / T2
France - Frankreich	M2 F4	NFP 92.507 NFP 16-101-102
Etats-Unis - USA	Conforme - Konform Class 1	CAL TB 117-2013 NFPA 260
Australie - Australien	Conforme - Konform Group 2	AS / NZS 1530-3 AS / NZS 3837
Test cigarette / allumette Zigarettentest / Streichholztest	Non allumage Kein Entflammen	EN 1021.1 - 1021.2
Test marine - Marine-Test	Conforme - Konform	IMO MSC.307 (88) (2010 FTP Code) Annex 1 part 8
Test aéronautique - Luftfahrttest	Conforme - Konform	FAR/JAR 25-853/855

### ■ Systèmes de management - Managementsysteme

Qualité - Qualität	ISO 9001
Environnement - Umwelt	ISO 14001

### ■ Certifications, labels, garanties - Zertifizierungen, labels, Garantien



**5 years  
guarantee**

**Phthalate  
free**

**Swiss  
made**

**Smart Coating  
Technology**



With **S+** Serge Ferrari goes further than the Standards.  
(consult us for further information)

Les caractéristiques techniques indiquées sont des valeurs moyennes avec une tolérance de +/- 5%. Nos produits sont sujets à des évolutions en fonction des progrès techniques et nous nous réservons le droit d'en modifier les caractéristiques à tout moment. Il est de la responsabilité de l'acheteur de nos produits de vérifier la validité des données ci-dessus.

Bei den angegebenen technischen Daten handelt es sich um Durchschnittswerte mit einer Abweichung von +/- 5%. Unsere Produkte unterliegen Änderungen aufgrund des technischen Fortschritts. Wir behalten uns das Recht vor, die Eigenschaften unserer Produkte jederzeit anzupassen. Es obliegt dem Käufer unserer Produkte, die Gültigkeit der o.g. Daten zu überprüfen.

Tonus 4

**kvadrat**



129



631



754



508



210



132



764



216



690



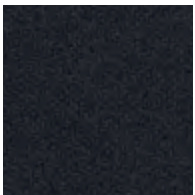
854



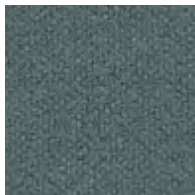
613



240



128



615



364



964



131



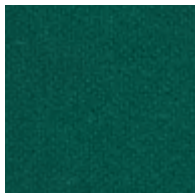
934



974



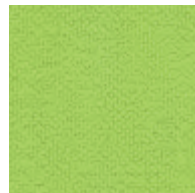
914



619



954



118



394



Tonus 4



424



440



125



454



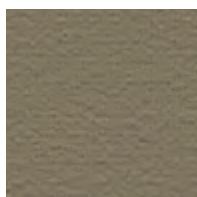
605



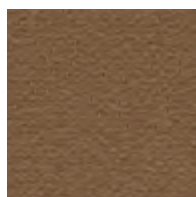
554



224



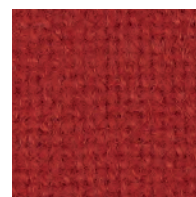
244



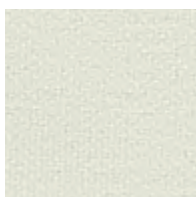
464



130



608



100



135



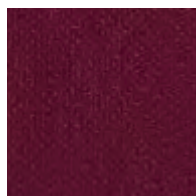
654



207



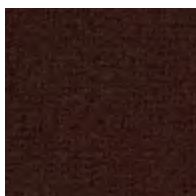
474



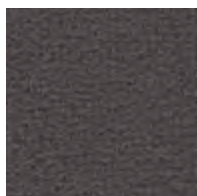
610



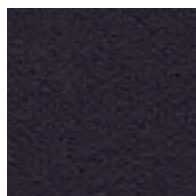
609



374



664



684



634



636

## Tonus 4

Designed by Nina Koppel

### DK

**Anvendelse** Kontorer, hoteller, institutioner, private indretninger. Stor slidstyrke og stretchegenskab.

**Beskrivelse** 90% ny uld. 10% Helanca. Bredde ca. 140 cm. Vægt ca. 665 g/lbm. Stykfarvet. I lyse farver kan fremmede fibre forekomme. Nuanceforskel kan forekomme.

### Ægkant ↔

**Slidstyrke:** Ca. 100.000 slidbevægelser efter Martindale metoden EN ISO 12947. **Lysægthed** (ISO) 5-7. **Pilling** (EN ISO) 3. **Gnidægthed** (ISO) tør 3-5, våd 3-5. **Lydb absorption** (EN ISO 354) 0.45/Class D (fladt), 0.60/Class C (foldet). **Airflow** 233 Pa s/m. **Flammesikring:** AS/NZS 1530.3. BS 5852 Crib 5 med flammesikring. BS 5852 part 1. EN 1021-1/2. IMO FTP Code 2010:Part 8. NF D 60 013. NFPA 260. SN 198 898 5.3 med flammesikring. UNI 9175 11M. US Cal. Bull. 117-2013. ÖNORM B1 / Q1. (Kopi af testrapport kan rekvireres). **Vedligeholdelse** Se ISO symboler.

### UK/US

**Application** Offices, hotels, institutions, domestic use. Great durability and stretchability. **Description** 90% new wool. 10% Helanca. Width app. 55 inches (140 cm). Weight app. 665 g/lin.m, 21.3 oz/ly. Piece dyed. Foreign fibres may occur in light colours. Colour differences may occur.

### Selvedge/Direction ↔

**Abrasion:** App. 100,000 rubs acc. to the Martindale method EN ISO 12947. **Lightfastness** (ISO) 5-7. **Pilling** (EN ISO) 3. **Fastness to rubbing** (ISO) dry 3-5, wet 3-5. **Sound absorption** (EN ISO 354) 0.45/Class D (flat), 0.60/Class C (waved). **Airflow** 233 Pa s/m. **Flame resistance:** AS/NZS 1530.3. BS 5852 Crib 5 with treatment. BS 5852 part 1. EN 1021-1/2. IMO FTP Code 2010:Part 8. NF D 60 013. NFPA 260. SN 198 898 5.3 with treatment. UNI 9175 11M. US Cal. Bull. 117-2013. ÖNORM B1 / Q1. (Copy of test report available). **Care** Please see the ISO symbols.

### DE

**Anwendungsbereich** Büros, Hotels, Objektbereich, privater Wohnbereich. Hohe Strapazierfähigkeit und Bi-Elastizität. **Beschreibung** 90% Schurwolle. 10% Helanca. Breite ca. 140 cm. Gewicht ca. 665 g/m. Stückgefärbt. In hellen Farben können Fremdfasern vorkommen. Farbunterschiede können vorkommen.

### Webkant ↔

**Scheuerfestigkeit:** Ca. 100.000 Scheuerhübe nach der Martindale Methode EN ISO 12947. **Lichtechtheit** (ISO) 5-7. **Pilling** (EN ISO) 3. **Reibechtheit** (ISO) trocken 3-5, nass 3-5. **Schallabsorption** (EN ISO 354) 0.45/Class D (glatt), 0.60/Class C (gefaltet). **Airflow** 233 Pa s/m. **Flammenschutz:** AS/NZS 1530.3. BS 5852 Crib 5 mit Ausrüstung. BS 5852 part 1. EN 1021-1/2. IMO FTP Code 2010:Part 8. NF D 60 013. NFPA 260. SN 198 898 5.3 mit Ausrüstung. UNI 9175 11M. US Cal. Bull. 117-2013. ÖNORM B1 / Q1. (Testbericht verfügbar). **Pflege** Siehe ISO Pflegesymbole.

### NL

**Toepassing** Kantoren, hotels, instellingen, de privéfeer. Uitstekende slijtvastheid en elasticiteit. **Omschrijving** 90% scheerwol. 10% Helanca. Breedte ca. 140 cm. Gewicht ca. 665 gr/str.m. Stukgeverfd. Afwijkende vezels kunnen voorkomen in lichte kleuren. Kleurverschillen kunnen optreden.

### Zelfkant ↔

**Slijtvastheid:** Ca. 100.000 toeren Martindale EN ISO 12947. **Lichtechtheid** (ISO) 5-7. **Pilling** (EN ISO) 3. **Wrijfchtheid** (ISO) droge 3-5, natte 3-5. **Geluidsabsorptie** (EN ISO 354) 0.45/Class D (vlak), 0.60/Class C (geplooid). **Airflow** 233 Pa s/m. **Brandwerendheid:** AS/NZS 1530.3. BS 5852 Crib 5 met behandeling. BS 5852 part 1. EN 1021-1/2. IMO FTP Code 2010:Part 8. NF D 60 013. NFPA 260. SN 198 898 5.3 met behandeling. UNI 9175 11M. US Cal. Bull. 117-2013. ÖNORM B1 / Q1. (Op aanvraag sturen wij u graag een kopie van het testrapport toe). **Onderhoud** Zie de ISO symbolen.

### FR

**Domaine d'utilisation** Tissu d'ameublement pour aménagement privé et public. Grande résistance et élasticité.

**Description** 90% laine vierge. 10% Helanca. Largeur env. 140 cm. Poids env. 665 g/m lg. Teinture à la pièce. Dans les couleurs claires, présence de fibres étrangères. Ecart de coloris possibles.

### Lisière ↔

**Résistance à l'abrasion:** Env. 100.000 révolutions selon le procédé Martindale EN ISO 12947. **Résistance à la lumière** (ISO) 5-7. **Boulochage** (EN ISO) 3. **Résistance au frottement** (ISO) sec 3-5, mouillé 3-5. **Absorption acoustique** (EN ISO 354) 0.45/Class D (à plat), 0.60/Class C (plié). **Airflow** 233 Pa s/m. **Normes au feu:** AS/NZS 1530.3. BS 5852 Crib 5 avec traitement. BS 5852 part 1. EN 1021-1/2. IMO FTP Code 2010:Part 8. NF D 60 013. NFPA 260. SN 198 898 5.3 avec traitement. UNI 9175 11M. US Cal. Bull. 117-2013. ÖNORM B1 / Q1. (La copie du compte rendu des tests est disponible sur demande). **Entretien** Voir les symboles ISO.

### IT

**Destinazione d'uso** Rivestimento per imbottiti casa e contract. Alta resistenza all'abrasione e capacità di stiramento. **Caratteristiche** 90% lana vergine. 10% Helanca. Altezza circa 140 cm. Peso circa 665 gr/mtl. Tinto in pezza. Nei colori chiari possono essere presenti fibre di tonalità scure. Possibili differenze per colore.

### Cimosa ↔

**Abrasion:** circa 100.000 cicli/metodo Martindale EN ISO 12947. **Resistenza alla luce** (ISO) 5-7. **Pilling** (EN ISO) 3. **Resistenza allo sfregamento** (ISO) condizione a secco 3-5, sfregamento umido 3-5. **Assorbimento acustico** (EN ISO 354) 0.45/Class D (tenda a pannello (tesa)), 0.60/Class C (tenda arricciata). **Airflow** 233 Pa s/m. **Ignifugazione:** AS/NZS 1530.3. BS 5852 Crib 5 trattato ignifugo. BS 5852 part 1. EN 1021-1/2. IMO FTP Code 2010:Part 8. NF D 60 013. NFPA 260. SN 198 898 5.3 trattato ignifugo. UNI 9175 11M. US Cal. Bull. 117-2013. ÖNORM B1 / Q1. (Disponibile copia del test). **Manutenzione** Per favore seguire simboli ISO.

### ES

**Aplicación** Oficinas, hoteles, instituciones, uso doméstico. Gran resistencia al desgaste y elasticidad.

**Descripción** 90% lana virgen. 10% Helanca. Anchura aprox. 140 cm. Peso aprox. 665 gr/ml. Teñido a la pieza. En los colores claros puede haber fibras de otro color. Posibles variaciones de color.

### Filo ↔

**Resistencia al desgaste:** Aprox. 100.000 ciclos según el método Martindale EN ISO 12947. **Resistencia a la luz** (ISO) 5-7. **Relleno** (EN ISO) 3. **Solidez al frotamiento** (ISO) seco 3-5, mojado 3-5. **Absorción acústica** (EN ISO 354) 0.45/Class D (estor), 0.60/Class C (cortina). **Airflow** 233 Pa s/m. **Resistencia al fuego:** AS/NZS 1530.3. BS 5852 Crib 5 con tratamiento. BS 5852 part 1. EN 1021-1/2. IMO FTP Code 2010:Part 8. NF D 60 013. NFPA 260. SN 198 898 5.3 con tratamiento. UNI 9175 11M. US Cal. Bull. 117-2013. ÖNORM B1 / Q1. (Copia del informe de ensayos disponible). **Mantenimiento** Consulte los símbolos ISO.

### JP

**用途** オフィス、ホテル、各種施設、住宅インテリア。耐耗性大。ストレッチ性大。

**詳細** 90% ニューウール。10% ヘランカ。幅:140 cm。重量:1mあたり約665 gr。製品染め。明色の場合異繊維の混合を見る例あり。色彩ニューアンスに多少の差が生じる可能性あり。

### 耳、ふち、↔

### テスト:

**磨耗:** マーチンデル法により摩擦運動約100,000回。EN ISO 12947. **色褪せ保証:** (ISO) 5-7. **ピリング** (EN ISO) 3. **摩擦保証:** (ISO) 乾燥状態 3-5、濡れた状態 3-5. **吸音率** (EN ISO 354) 0.45/Class D (パネル状)、0.60/Class C (ドレープ状)。 **airflow:** 233 Pa s/m. **耐炎性:** AS/NZS 1530.3. 特殊耐炎処理を行うことにより、BS 5852 Crib 5 に到達可能。BS 5852 part 1. EN 1021-1/2. IMO FTP Code 2010:Part 8. NF D 60 013. NFPA 260. 特殊耐炎処理を行うことにより、SN 198 898 5.3 に到達可能。UNI 9175 11M. US Cal. Bull. 117-2013. ÖNORM B1 / Q1. (テストレポートのコピー入手可能。)

### 手入れ

ISO シンボル参照。

### CN

**适用范围** 办公室、宾馆酒店、公共设施、居家使用。耐耗性大、高延展性。

**成分** 90%新羊毛、10%弹力纱(Helanca)。幅宽约55英寸(140cm)、重量约665克/延米。坯布染色面料。浅色面料可能会有外来纤维。颜色可能稍有色差。

### 图纹方向 ↔

**马丁代尔法**约100,000转EN ISO 12947. **光照色牢度** (ISO) 5-7. **起毛起球** (EN ISO) 3. **磨擦色牢度** (ISO) 干燥3-5、湿3-5. **吸声系数** (EN ISO 354) 0.45/Class D (隔断帘)、0.60/Class C (一般窗帘使用). **气流阻力** 233 Pa s/m. **阻燃性:** AS/NZS 1530.3. 特别耐火处理时 BS 5852 Crib 5 可以满足。BS 5852 part 1. EN 1021-1/2. IMO FTP Code 2010:Part 8. NF D 60 013. NFPA 260. 特别耐火处理时 SN 198 898 5.3 可以满足。UNI 9175 11M. US Cal. Bull. 117-2013. ÖNORM B1 / Q1. (可提供测试报告副本). **维护** 请参照ISO标志。



10 year warranty



Quality and environmental system accreditation according to ISO 9001 and ISO 14001.

\*ACT® Registered Certification Marks

Encouraging the use of sustainable fibres. Durable and high quality. Hazardous substances restricted.

Contact and further information [www.kvadrat.dk](http://www.kvadrat.dk)

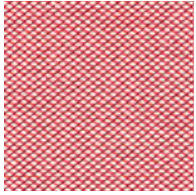
US contact info: 1-800-620-9309

Steelcut Trio 3

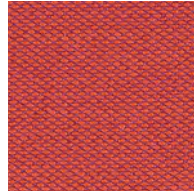
**kvadrat**



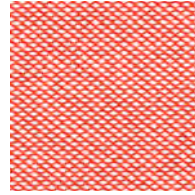
### Steelcut Trio 3



636



553



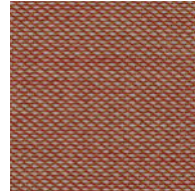
526



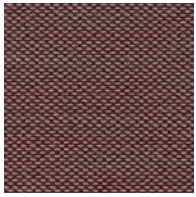
686



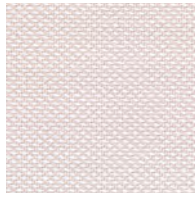
666



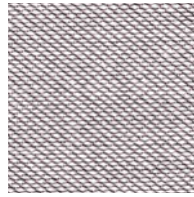
515



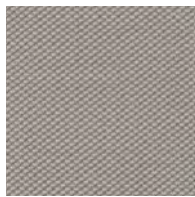
645



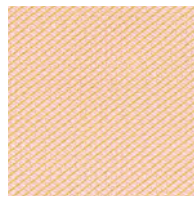
226



616



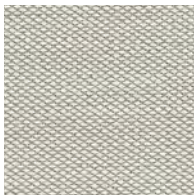
205



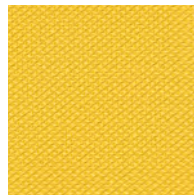
506



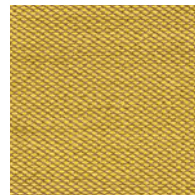
236



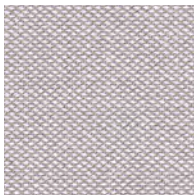
213



446



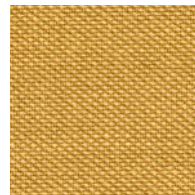
453



246

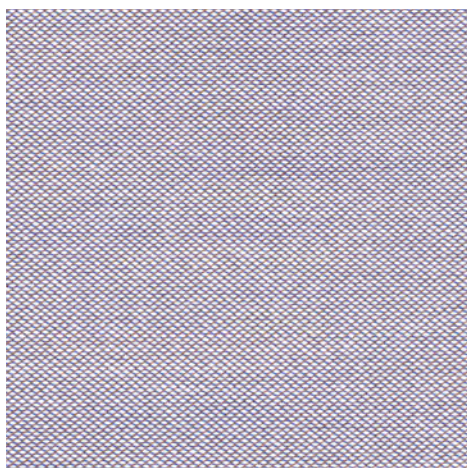


253



466

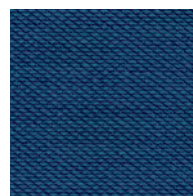
Steelcut Trio 3



806



883



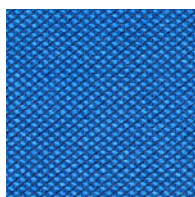
865



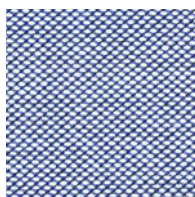
796



756



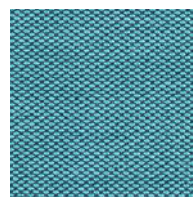
746



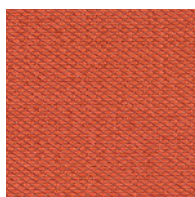
716



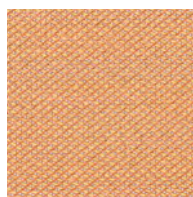
776



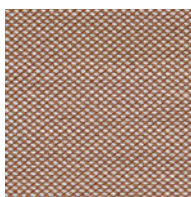
983



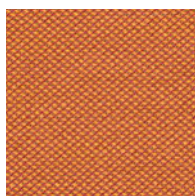
533



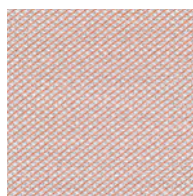
436



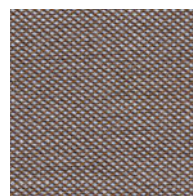
476



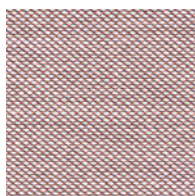
576



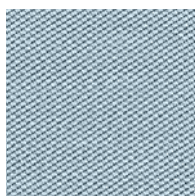
426



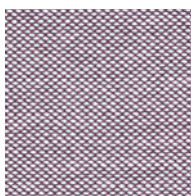
376



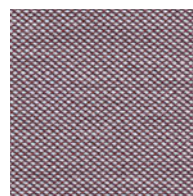
416



713



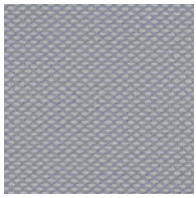
336



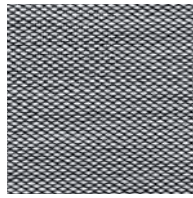
276



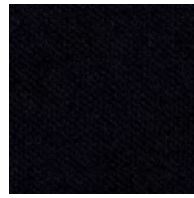
### Steelcut Trio 3



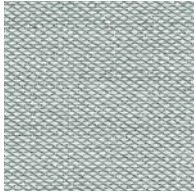
105



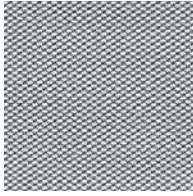
124



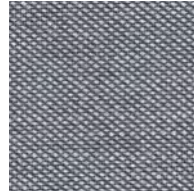
195



113



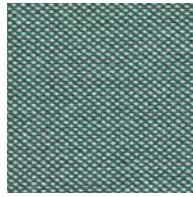
133



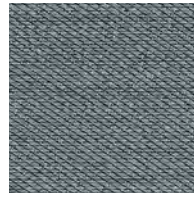
176



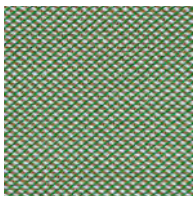
266



966



153



946



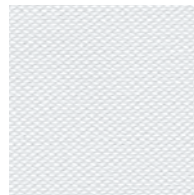
953



283



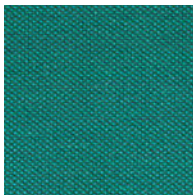
996



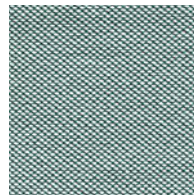
906



383



976



916



## Steelcut Trio 3

Designed by Frans Dijkmeijer and Giulio Ridolfo

### DK

**Anvendelse** Kontorer, hoteller, institutioner, private indretninger. Stor slidstyrke.  
**Beskrivelse** 90% ny uld, kamgarn, 10% nylon. Bredde ca. 140 cm. Vægt ca. 770 g/lbm. Garnfarvet. Nuanceforskelle kan forekomme.  
**Ægkant** ↓  
**Slidstyrke:** Ca. 100.000 slidbevægelser efter Martindale metoden EN ISO 12947. **Lysægtighed** (ISO) 5-7. **Pilling** (EN ISO) 4. **Gnidægtighed** (ISO) tør 4-5, våd 3-5. **Lydsorption** (EN ISO 354) 0.70/Class C (fladt), 0.95/Class A (foldet). **Airflow** 910 Pa s/m. **Flammesikring:** AS/NZS 1530.3. AS/NZS 3837 Class 2. BS 5852 Crib 5 med flammesikring. BS 5852 ignition source 3. BS 5852 part 1. EN 1021-1/2. GB 50222 B1 med flammesikring. IMO FTP Code 2010:Part 8. NF D 60 013. NFPA 260. SN 198 898 5.3 med flammesikring. UNI 9175 11M. US Cal. Bull. 117-2013. ÖNORM B1 / Q1. (Kopi af testrapport kan rekvireres).  
**Vedligeholdelse** Se ISO symboler.

### UK/US

**Application** Offices, hotels, institutions, domestic use. Great durability.  
**Description** 90% new wool, worsted, 10% nylon. Width app. 55 inches (140 cm). Weight app. 24.7 oz/ly (770 g/lin.m). Yarn dyed. Colour differences may occur.  
**Selvedge/Direction** ↓  
**Abrasion:** App. 100,000 rubs acc. to the Martindale method EN ISO 12947. **Lightfastness** (ISO) 5-7. **Pilling** (EN ISO) 4. **Fastness to rubbing** (ISO) dry 4-5, wet 3-5. **Sound absorption** (EN ISO 354) 0.70/Class C (flat), 0.95/Class A (waved). **Airflow** 910 Pa s/m. **Flame resistance:** AS/NZS 1530.3. AS/NZS 3837 Class 2. BS 5852 Crib 5 with treatment. BS 5852 ignition source 3. BS 5852 part 1. EN 1021-1/2. GB 50222 B1 with treatment. IMO FTP Code 2010:Part 8. NF D 60 013. NFPA 260. SN 198 898 5.3 with treatment. UNI 9175 11M. US Cal. Bull. 117-2013. ÖNORM B1 / Q1. (Copy of test report available).  
**Care** Please see the ISO symbols.

### DE

**Anwendungsbereich** Büros, Hotels, Objectbereich, privaten Wohnbereich, Hohe Strapazierfähigkeit.  
**Beschreibung** 90% Schurwolle, Kammgarn. 10% Nylon. Breite ca. 140 cm. Gewicht ca. 770 g/m. Garngefärbt. Farbunterschiede können vorkommen.  
**Webkant** ↓  
**Scheuerfestigkeit:** Ca. 100.000 Scheuerhübe nach der Martindale Methode EN ISO 12947. **Lichtechtheit** (ISO) 5-7. **Pilling** (EN ISO) 4. **Reibechtheit** (ISO) trocken 4-5, nass 3-5. **Schallabsorption** (EN ISO 354) 0.70/Class C (glatt), 0.95/Class A (gefaltet). **Airflow** 910 Pa s/m. **Flammschutz:** AS/NZS 1530.3. AS/NZS 3837 Class 2. BS 5852 Crib 5 mit Ausrüstung. BS 5852 ignition source 3. BS 5852 part 1. EN 1021-1/2. GB 50222 B1 mit Ausrüstung. IMO FTP Code 2010:Part 8. NF D 60 013. NFPA 260. SN 198 898 5.3 mit Ausrüstung. UNI 9175 11M. US Cal. Bull. 117-2013. ÖNORM B1 / Q1. (Testbericht verfügbar).  
**Pflege** Siehe ISO Pflegesymbole.

### NL

**Toepassing** Kantoren, hotels, instellingen, de privéfeer. Uitstekende slijtvastheid.  
**Omschrijving** 90% scheerwol, kamgaren, 10% nylon. Breedte ca. 140 cm. Gewicht ca. 770 gr/str. m. Garegeverfd. Kleurverschillen kunnen optreden.  
**Zelfkant** ↓  
**Slijtvastheid:** Ca. 100.000 toeren Martindale EN ISO 12947. **Lichtechtheid** (ISO) 5-7. **Pilling** (EN ISO) 4. **Wrijfechtheid** (ISO) droge 4-5, natte 3-5. **Geluidsabsorptie** (EN ISO 354) 0.70/Class C (vlak), 0.95/Class A (geplooid). **Airflow** 910 Pa s/m. **Brandwerendheid:** AS/NZS 1530.3. AS/NZS 3837 Class 2. BS 5852 Crib 5 met behandeling. BS 5852 ignition source 3. BS 5852 part 1. EN 1021-1/2. GB 50222 B1 met behandeling. IMO FTP Code 2010:Part 8. NF D 60 013. NFPA 260. SN 198 898 5.3 met behandeling. UNI 9175 11M. US Cal. Bull. 117-2013. ÖNORM B1 / Q1. (Op aanvraag sturen wij u graag een kopie van het testrapport toe).  
**Onderhoud** Zie de ISO symbolen.

### FR

**Domaine d'utilisation** Tissu d'ameublement pour aménagement privé et public. Grande résistance.  
**Description** 90% laine vierge, peignée, 10% nylon. Largeur env. 140 cm. Poids env. 770 g/m lg. Teinture sur fil. Ecart des coloris possibles.  
**Lisière** ↓  
**Résistance à l'abrasion:** Env. 100.000 révolutions selon le procédé Martindale EN ISO 12947. **Résistance à la lumière** (ISO) 5-7. **Boulochage** (EN ISO) 4. **Résistance au frottement** (ISO) sec 4-5, mouillé 3-5. **Absorption acoustique** (EN ISO 354) 0.70/Class C (à plat), 0.95/Class A (plié). **Airflow** 910 Pa s/m. **Normes au feu:** AS/NZS 1530.3. AS/NZS 3837 Class 2. BS 5852 Crib 5 avec traitement. BS 5852 ignition source 3. BS 5852 part 1. EN 1021-1/2. GB 50222 B1 avec traitement. IMO FTP Code 2010:Part 8. NF D 60 013. NFPA 260. SN 198 898 5.3 avec traitement. UNI 9175 11M. US Cal. Bull. 117-2013. ÖNORM B1 / Q1. (La copie du compte rendu des tests est disponible sur demande).  
**Entretien** Voir les symboles ISO.

### IT

**Destinazione d'uso** Rivestimenti per imbottiti, casa e contract. Alta resistenza all'abrasione.  
**Caratteristiche** 90% lana vergine, pettinata, 10% nylon. Altezza circa 140 cm. Peso circa 770 gr/mtl. Tinto in filo. Possibili differenze per colore.  
**Cimosa** ↓  
**Resistenza all'abrasione:** circa 100.000 cicli/ metodo Martindale EN ISO 12947. **Resistenza alla luce** (ISO) 5-7. **Pilling** (EN ISO) 4. **Resistenza allo sfregamento** (ISO) condizione a secco 4-5, condizione umido 3-5. **Assorbimento acustico** (EN ISO 354) 0.70/Class C (tenda a pannello (tesa)), 0.95/Class A (tenda arricciata). **Airflow** 910 Pa s/m. **Ignifugazione:** AS/NZS 1530.3. AS/NZS 3837 Class 2. BS 5852 Crib 5 trattato ignifugo. BS 5852 ignition source 3. BS 5852 part 1. EN 1021-1/2. GB 50222 B1 trattato ignifugo. IMO FTP Code 2010:Part 8. NF D 60 013. NFPA 260. SN 198 898 5.3 trattato ignifugo. UNI 9175 11M. US Cal. Bull. 117-2013. ÖNORM B1 / Q1. (Disponibile copia del test).  
**Manutenzione** Per favore seguire simboli ISO.

### ES

**Aplicación** Adecuado para el uso en oficinas, hoteles, instituciones y hogares. Gran resistencia al desgaste.  
**Decripción** 90% lana virgen, peinada, 10% nilón. Anchura aprox. 140 cm. Peso aprox. 770 gr/ml. Hilo teñido. Posibles variaciones de color.  
**Filo** ↓  
**Resistencia al desgaste:** Aprox. 100.000 ciclos según el método Martindale EN ISO 12947. **Resistencia a la luz** (ISO) 5-7. **Relleño** (EN ISO) 4. **Solidez al frotamiento** (ISO) seco 4-5, mojado 3-5. **Absorción acústica** (EN ISO 354) 0.70/Class C (estor), 0.95/Class A (cortina). **Airflow** 910 Pa s/m. **Resistencia al fuego:** AS/NZS 1530.3. AS/NZS 3837 Class 2. BS 5852 Crib 5 con tratamiento. BS 5852 ignition source 3. BS 5852 part 1. EN 1021-1/2. GB 50222 B1 con tratamiento. IMO FTP Code 2010:Part 8. NF D 60 013. NFPA 260. SN 198 898 5.3 con tratamiento. UNI 9175 11M. US Cal. Bull. 117-2013. ÖNORM B1 / Q1. (Copia del informe de ensayos disponible).  
**Limpieza** Consulte los símbolos ISO.

### JP

**用途** オフィス、ホテル、各種施設、住宅インテリア。耐耗性大。  
**詳細** 90% ニューウール。ウーステッド、10% ナイロン。幅:140cm。重量:1mあたり約770gr。糸染め。明色の場合、異質繊維が混在する場合があります。色彩ニューアンスに多少の違いが生じる可能性あり。  
**耳、ふち** ↓  
**テスト**  
**磨耗:** マーチンデール法により摩擦運動約100,000回。EN ISO 12947. **色褪せ保証:** (ISO) 5-7. **ピリング** (EN ISO) 4. **摩擦保証:** (ISO) 乾燥状態 4-5、濡れた状態 3-5. **吸音率** (EN ISO 354) 0.70/Class C (バネル状)、0.95/Class A (ドレープ状). **気流:** 910 Pa s/m. **耐炎性:** AS/NZS 1530.3. AS/NZS 3837 Class 2. BS 5852 Crib 5 に到達可能。BS 5852 ignition source 3. BS 5852 part 1. EN 1021-1/2. 特殊耐炎処理を行うことにより、GB 50222 B1 に到達可能。IMO FTP Code 2010:Part 8. NF D 60 013. NFPA 260. 特殊耐炎処理を行うことにより、SN 198 898 5.3 に到達可能。UNI 9175 11M. US Cal. Bull. 117-2013. ÖNORM B1 / Q1. (テストレポートコピー入手可能。)  
**手入れ**  
ISO シンボル参照。

### CN

**适用范围** 办公室, 宾馆酒店, 公共设施, 居家使用。耐耗性大。  
**成分** 90%新羊毛, 精纺, 10%尼龙。幅宽约55英寸(140 cm)。重量770克/延米, 纱染色面料。颜色可能稍有色差。  
**织边方向** ↓  
**马丁代尔法**约100,000转。EN ISO 12947. **光照色牢度** (ISO) 5-7. **起毛起球** (EN ISO) 4. **磨擦色牢度** (ISO) 干燥4-5, 湿3-5. **吸声系数** (EN ISO 354) 0.70/Class C (隔帘布), 0.95/Class A (一般窗帘使用). **气流阻力** 910 Pa s/m. **阻燃性:** AS/NZS 1530.3, AS/NZS 3837 Class 2. 特别耐火处理时BS 5852 Crib 5 可以满足。BS 5852 ignition source 3, BS 5852 part 1, EN 1021-1/2. 特别耐火处理时GB 50222 B1 可以满足。IMO FTP Code 2010:Part 8, NF D 60 013, NFPA 260. 特别耐火处理时SN 198 898 5.3 可以满足。UNI 9175 11M, US Cal. Bull. 117-2013. ÖNORM B1 / Q1. (可提供测试报告副本).  
**维护** 请参照ISO标志。



10 year warranty



Quality and environmental system accreditation according to ISO 9001 and ISO 14001.

\*ACT® Registered Certification Marks

Encouraging the use of sustainable fibres. Durable and high quality. Hazardous substances restricted.

Contact and further information [www.kvadrat.dk](http://www.kvadrat.dk)

US contact info: 1-800-620-9309

# SoftArt®

Leather with timeless tradition

## Scandinavian

Scandinavian

## Scandinavian

Ein Leder mit feinem, flachem Narbenbild, eleganter Wolkigkeit und dezentem Glanz – angenehm im Griff. Die Atmungsaktivität dieses Leders bietet einen hervorragenden Sitzkomfort. Durch die große Farbpalette und brillanten Farben ist Scandinavian vielseitig einsetzbar.

<b>Lederdicke</b>	1.1 – 1.3 mm
<b>Weiterreißkraft</b>	> 20 N/mm
<b>Reibechtheit</b>	4
<b>Lichtechtheit</b>	4
<b>Knickungen</b>	30.000
<b>Flammfestigkeit</b>	DIN EN 1021 I+ II (Europe)

*Kleinere Farb- und Strukturabweichungen sind beim Naturprodukt Leder möglich.*

SoftArt® Leder GmbH  
Fritz-Schweizer-Straße 34  
71540 Murrhardt/Germany

Tel. +49 (0) 7192 212 370  
Fax +49 (0) 7192 212 380  
service@softart-leder.com  
www.softart-leder.com

A beautiful leather which has a soft touch, with a fine smooth grain, an elegant savage effect and a silky sheen. The active breathing of this leather provides excellent seating comfort. Scandinavian is for all-round use due to its wide range of brilliant colours.

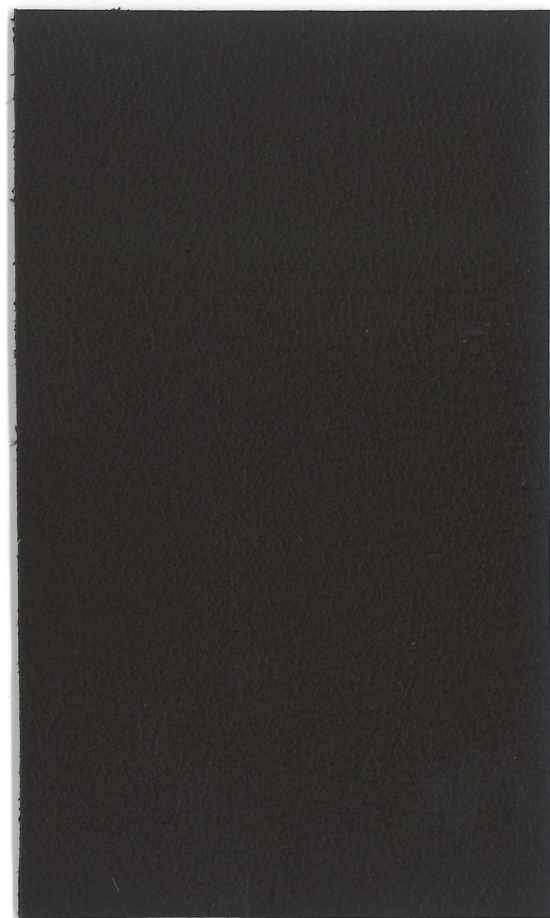
<b>Thickness</b>	1.1 – 1.3 mm
<b>Tear Strength</b>	> 20 N/mm
<b>Rubbing Fastness</b>	4
<b>Light Fastness</b>	4
<b>Flexing Endurance</b>	30.000
<b>Flammability</b>	DIN EN 1021 I+ II (Europe)

*Colour and grain variations are possible due to the natural character of leather.*

SoftArt® Leder GmbH  
- Collection -  
Ölbergstr. 32  
72501 Gammertingen/Germany  
Tel. +49 (0) 7574 9328 20  
Fax +49 (0) 7574 9328 28  
collection@softart-leder.com  
www.softart-leder-shop.de



# Scandinavian

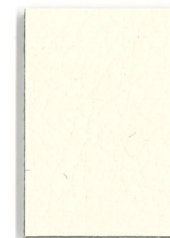


2212  
Mocca  
mocca

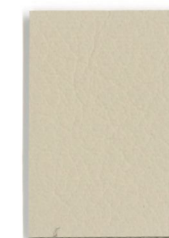
**SoftArt.**<sup>®</sup>  
Leather with timeless tradition



9436  
Elfenbein  
ivory



9135  
Wolle  
wool



9372  
Mandel  
almond



9266  
Sesam  
sesame



2440  
Cappuccino  
cappuccino



2488  
Cognac  
cognac



2229  
Kastanie  
chestnut



4712  
Aubergine  
aubergine



7301  
Olive  
olive



3512  
Granit  
granite



2212  
Mocca  
mocca



4833  
Mandarine  
mandarin



4290  
Koralle  
coral



4510  
Orient  
orient



4084  
Bordeaux  
bordeaux



7220  
Kiwi  
kiwi



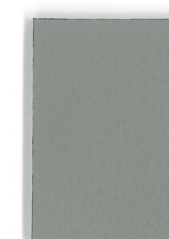
7232  
Tanne  
fir



5059  
Petrol  
petrol



5040  
Atlantik  
atlantic



1431  
Dust  
dust



1262  
Anthrazit  
anthracite



1670  
Grafit  
graphite



0500  
Schwarz  
black

Scandinavian





11500



11000



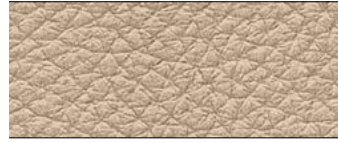
9500



6550



6510



9000



7000



6530



5000



5500



1500



2000



6560



1000



4500



6540



6570



6520



12500



8000

Donna ist ein vollnarbiges, nachpigmentiertes Nappaleder. Es zeichnet sich durch sein gleichmässiges Narbenbild aus. Die semianiline Färbung eignet sich besonders für Bezüge mit einer regelmässig stärkeren Beanspruchung. Die gleichmässige Struktur des Leders verleiht dem Material die runden Walknarben.

Donna est un cuir nappa pleine fleur repigmenté. Il se caractérise par un grain régulier. La coloration semi-aniline est particulièrement appropriée pour les revêtements soumis régulièrement à un usage intensif. Des pores ronds confèrent au matériau une structure homogène.

Donna is a full-grain Nappa leather with a pigmented finish. It has an even texture. The semi-aniline dye used is particularly suitable for covers subject to regular, heavy use. The consistent structure of the leather gives it a milled appearance.

Donna is een hoogwaardig gepigmenteerd nappa leersoort met veel structuur. Donna kenmerkt zich door de gelijkmatige structuur. Dit semi-anilineleer is bijzonder geschikt voor meubels die intensief gebruikt worden. De gelijkmatige structuur van het leer geeft het materiaal de ronde nerf look.

Reibechtheit  
Résistance au frottement  
Fastness to rubbing  
Wrijftechtheid

Lichtechtheit  
Résistance à la lumière  
Light-fastness  
Lichtechtheid

4

4



SUSTAINABLE LEATHER®

**DANI**

acquario  
collection

acquario 7 colours

#### SCHEDA TECNICA / TECHNICAL SHEET

Pelle bovina di origine europea conciata al cromo  
Chrome tanned bull hides with European origin

Anilina - pieno fiore - tintura all'anilina passante in botte  
Aniline - full grain - through-dyeing aniline

SPESSORE / THICKNESS 1.0 - 1.2 mm

#### TEST SOLIDITÀ DEL COLORE / COLOR FASTNESS

##### Proprietà / Property

Solidità del colore allo strofinio a secco - 50 cicli  
Dry rub fastness - 50 cycles

##### Norma / Test method

UNI EN ISO 11640

##### Prestazioni / Performance

≥3 Scala Grigi / Grey Scale

Solidità del colore allo strofinio a umido - 20 cicli  
Wet rub fastness - 20 cycles

UNI EN ISO 11640

≥3 Scala Grigi / Grey Scale

Solidità del colore allo strofinio con sudore alcalino - 20 cicli  
Alkaline perspiration rub fastness - 20 cycles

UNI EN ISO 11640

≥3 Scala Grigi / Grey Scale

Solidità del colore alla luce artificiale  
Light fastness

UNI EN ISO 105-B02

≥3 Scala Blu / Blue Scale

#### TEST FISICI / PHYSICAL CHARACTERISTICS

##### Proprietà / Property

Resistenza alla lacerazione  
Tear resistance

##### Norma / Test method

UNI EN ISO 3377-1

##### Prestazioni / Performance

≥ 20 N

#### TEST INFIAMMABILITÀ / FLAMMABILITY


Cigarette test - Match test  
FS191 Method 5903-Port Authority of New York & New Jersey  
IMO Resolution A.652 (16)  
California TB 117 Section E


UNI EN 1021-1 - UNI EN 1021-2


Conforme / Complies  
Conforme / Complies  
Conforme / Complies  
Conforme / Complies

L'articolo è realizzato nel rispetto della direttiva REACH / Our leather is processed in conformity with REACH regulation

#### PULIZIA E MANUTENZIONE / CLEANING AND MAINTENANCE

 Evitare la luce diretta del sole  
Avoid placing leather in direct sun

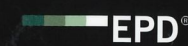
 Evitare l'esposizione a fonti di calore  
Keep the leather away from direct heat

 Spolverare regolarmente la pelle  
con un panno morbido ed asciutto  
Dust regularly with a soft and dry cloth

#### CERTIFICAZIONI / CERTIFICATIONS



UNI 11239



ISO 14025



ISO 14067/CD2



RAL-UZ 148



RAL-GZ 430

SUSTAINABLE LEATHER®  
**DANI**

**DANI** s.p.a.

Sede Legale e Amministrativa:

Z.I. Via Della Concia, 186

36071 Arzignano (VI) Italy

p.iva 00552430985

info@gruppodani.it - www.gruppodani.it

Divisione Home Style & Fashion:

Z.I. 4ª Strada, 20 - 36071 Arzignano (VI) Italy

tel. +39 0444 471211 - fax +39 0444 450839

**DANI** Leather USA, Inc.

37 Ironia Road, Flanders, NJ 07836

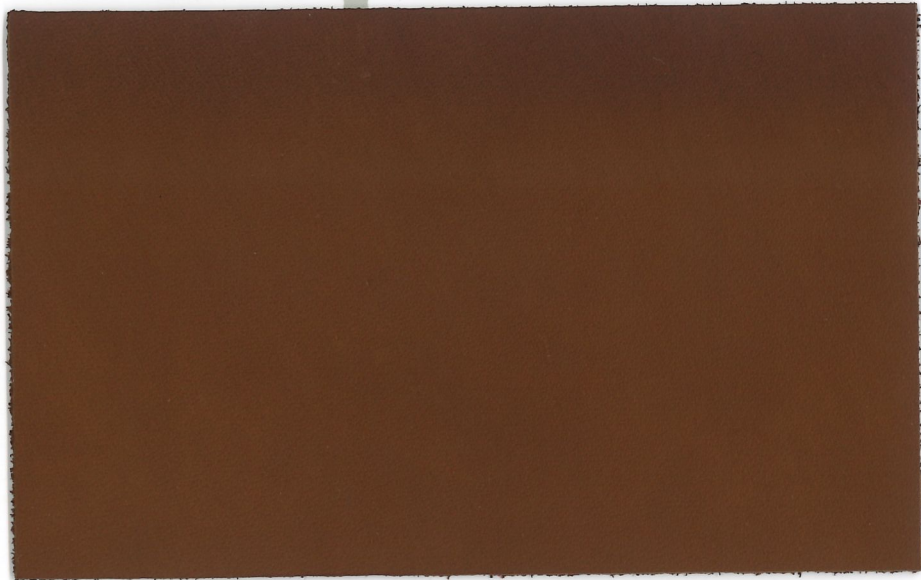
tel. +1973 598 0890 - fax +1973 598 0893

www.danileatherusa.com





# acquario



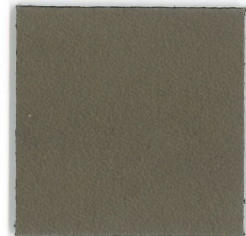
Die Farben „Polvere“ und „Collant“ sind für Diagon Executive nicht lieferbar

Les couleurs „Polvere“ et „Collant“ ne sont pas livrables pour Diagon Executive

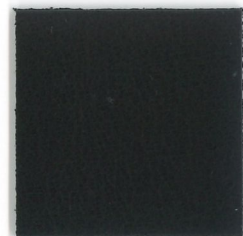
The colours "Polvere" and "Collant" are not available for Diagon Executive



POLVERE



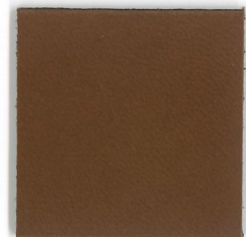
FANGO



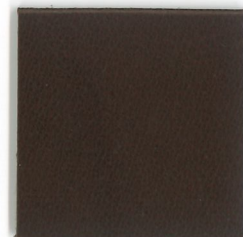
ANTRACITE



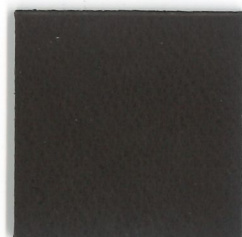
COLLANT



CUOIO



MARRONE



T. MORO



# acquario





# SoftArt®

Leather with timeless tradition

## Montana

Montana

## Montana

Ein Dickleder für gehobene Ansprüche. Durch sein betontes Narbenbild bietet Montana elegante Lebendigkeit. Ein voller und weicher Griff kombiniert mit einer kräftigen Struktur bildet den Charakter dieses außergewöhnlichen Leders.

<b>Lederdicke</b>	1.4 – 1.6 mm
<b>Weiterreißkraft</b>	> 20 N/mm
<b>Reibechtheit</b>	4
<b>Lichtechtheit</b>	4
<b>Knickungen</b>	50.000
<b>Flammfestigkeit</b>	DIN EN 1021 I + II

*Kleinere Farb- und Strukturabweichungen sind beim Naturprodukt Leder möglich.*

SoftArt® Leder GmbH  
Fritz-Schweizer-Straße 34  
71540 Murrhardt/Germany

Tel. +49 (0) 7192 212 370  
Fax +49 (0) 7192 212 380  
service@softart-leder.com  
www.softart-leder.com

A thick leather meeting the demands of high standards. Montana provides an elegant and unique appearance. The full and soft feel combined with its substantial structure represent the characteristics of this extraordinary leather.

<b>Thickness</b>	1.4 – 1.6. mm
<b>Tear Strength</b>	> 20 N/mm
<b>Rubbing Fastness</b>	4
<b>Light Fastness</b>	4
<b>Flexing Endurance</b>	50.000
<b>Flammability</b>	DIN EN 1021 I + II

*Colour and grain variations are possible due to the natural character of leather.*

SoftArt® Leder GmbH  
- Collection -  
Ölbergstraße 32  
72501 Gammertingen/Germany  
Tel. +49 (0) 7574 93 28 20  
Fax +49 (0) 7574 93 28 28  
collection@softart-leder.com  
www.softart-leder-shop.de

SoftArt® Leather with timeless tradition

# Montana

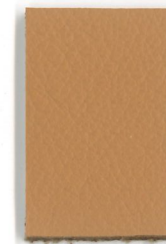


2513  
Haselnuss  
hazel

**SoftArt.**<sup>®</sup>  
Leather with timeless tradition



9266  
Sesam  
sesame



2834  
Ocker  
ochre



2513  
Haselnuss  
hazel



2488  
Cognac  
cognac



2213  
Kaffee  
coffee



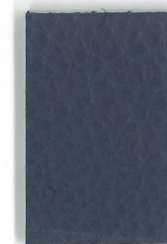
4468  
Terrakotta  
terracotta



4223  
Burgund  
burgundy



7294  
Moos  
moss



5284  
Jeans  
jeans



5150  
Nachtblau  
nightblue

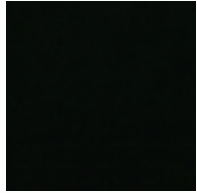


5046  
Schwarzblau  
blackblue



0500  
Schwarz  
black

Montana



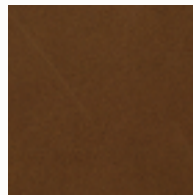
0500  
black



2122  
ebony



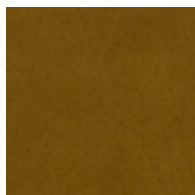
2267  
tabac



2603  
oak



2387  
mahagoni



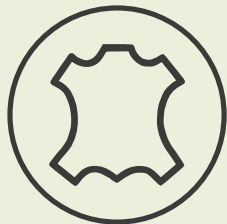
2828  
maple





Rein naturbelassenes Nappaleder mit feinem Wachsriff  
*Pure natural nappa leather with smooth waxy touch*

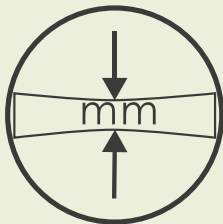
**ROHHÄUTE**  
**RAWHIDES**



Europäische  
 Rindhäute  
 European  
 raw hides

4,6 - 5,2 m<sup>2</sup>

**STÄRKE**  
**THICKNESS**



1,2 - 1,4 mm

**OBERFLÄCHE**  
**SURFACE**



rein naturbelassen  
*pure natural*

**GERBUNG**  
**TANNING**



Olivenblattgerbung  
*Olive leaf tanning*

**BRANDVERHALTEN**  
**INFLAMMABILITY**



DIN EN 1021-1 EUFAC  
 DIN EN 1021-2 EUFAC

Einsatz / use	Möbel, Accessoires, Applikationen, Lederwaren <i>Furniture, accessories, application, leather goods</i>
Farben / colours	Laut Musterkarte (Sonderfarben auf Anfrage) <i>According to colour card (special colours upon request)</i>
Lieferung / shipment	Ab Lager / ex work
Minimum	1 Haut / 1 hide
Fettung / fatting	Hochwertige Fettstoffe für einen weichen, softigen Griff. <i>High-value fat stuffs for a comfortably soft feel.</i>
Gerbung / tanning	Gegerbt mit nachhaltigem Olivenblattextrakt. <i>Tanned with sustainable olive leaf extract.</i>
Färbung / dyeing	Im Fass durchgefärbt, mit hochwertigen Farbstoffen. <i>Dyed-through in the drum, with high-class dye stuffs.</i>
Oberfläche / surface	Rein naturbelassenes Nappa-Leder mit Wachsriff. <i>Pure natural nappa-leather with waxy touch.</i>
PCP	Entspricht der PCP-Verbotsverordnung vom 12.12.1989 <i>According to the PCP-regulation dated 12/12/1989</i>
Umwelt, AZO-Farbstoffe / environment, AZO colours	Die Leder werden umweltfreundlich und ohne Einsatz von AZO-Farbstoffen, gemäß der Verbotsverordnung, hergestellt. / <i>The leathers are being produced ecologically safe, according to laws and regulations, without AZO colours.</i>
Brandverhalten / inflammability	DIN EN 1021-1 EUFAC, DIN EN 1021-2 EUFAC
Lichtbeständigkeit / light constancy	≥ 5 (EN ISO 105 - B02)
Reibechtheit / rubbing fastness	≥ 3 trocken / dry: 50 EN ISO 11640 (schwarz / black ≥ 2) ≥ 3-4 nass / wet: 20 EN ISO 11640 (schwarz / black ≥ 2) ≥ 3-4 alkalisch / alcalic: 20 EN ISO 11640 (schwarz / black ≥ 2)
Dauerfaltverhalten / crack resistance	30 000 - keine Veränderungen / <i>no damage</i> EN ISO 5402
Pflege / care	Die Leder können mit einem nebelfeuchten Tuch und neutraler Seifenlösung gereinigt werden. / <i>The leathers can be cleaned with a moistened cloth and neutral soap.</i>  Die passende Pflege finden Sie auf / <i>You will find suitable leather care products on</i> <a href="http://www.leder-reinhardt.lederpflege.de">www.leder-reinhardt.lederpflege.de</a>





LEDER REINHARDT

— VERONA —

VERONA





# LEDER REINHARDT

## COLLECTION

Die am Bildschirm dargestellten Farbmuster dienen als Anhaltspunkte. *The colour samples presented are indicative only*



0500  
schwarz



1153  
graphit



1248  
elefantengrau



1269  
taupe



1290  
grigio



2215  
cioccolato



2289  
terra



2361  
noce



3697  
cammello



3827  
avorio



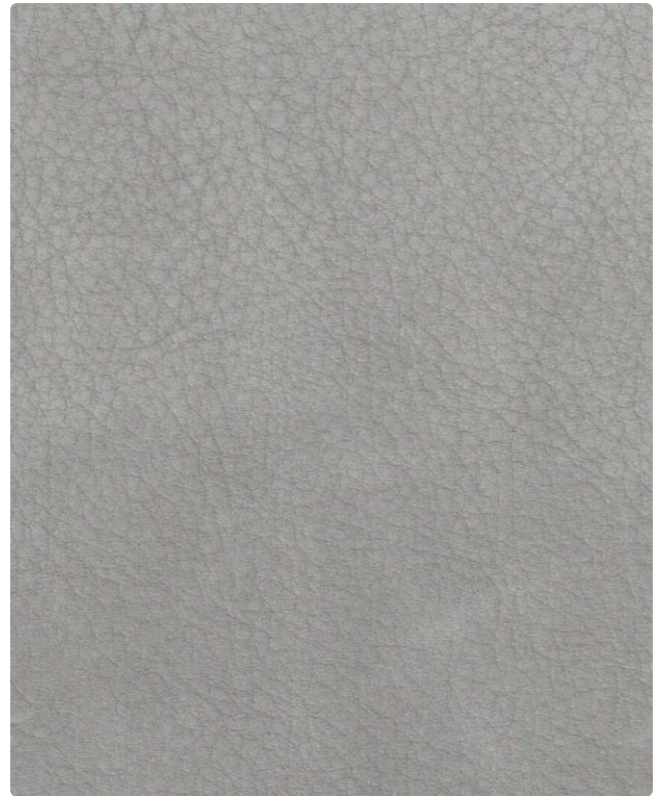
3842  
ghiaccio



4336  
merlot



7771  
pino



Kleine Farbabweichungen sind beim Naturprodukt Leder möglich.  
*Colour variations are possible due to the natural character of leather.*

# VERONA



# VERONA



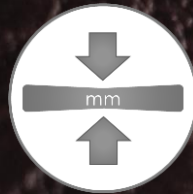
Rind-Nubukleder mit natürlichem Walknarben  
Cattle hide nubuck leather with natural grain

ROHHÄUTE  
RAWHIDES



Europäische  
Rindschäute  
European  
cattle hides  
4,8 – 5,7 m<sup>2</sup>

STÄRKE  
THICKNESS



1,4 – 1,6 mm

OBERFLÄCHE  
SURFACE



Nubukleder  
Nubuck leather

GERBUNG  
TANNING



Ökologiegerechte  
Mineralgerbung  
Ecologically safe  
mineral tannage

BRANDVERHALTEN  
INFLAMMABILITY



Möbel, Lederwaren,  
Objektbereich  
Furniture, leathergoods,  
contract business

Farben / colours	Laut Musterkarte (Sonderfarben auf Anfrage) According to colour card (special colours upon request)
Lieferung / shipment	Ab Lager / ex stock
Minimum	1 Haut / hide
Fettung / fatting	Hochwertige Fettstoffe für einen weichen, softigen Griff High-value fat stuffs for a comfortably soft feel
Färbung / dyeing	Im Fass durchgefärbt, mit hochwertigen Farbstoffen Dyed-through in the drum, with high-class dye stuffs
Oberfläche / surface	Narben angeschliffen Shaved grain
PCP	Entspricht der PCP-Verbotsverordnung vom 12.12.1989 According to the PCP-regulation dated 12/12/1989.
Umwelt, AZO-Farbstoffe / environment, AZO colours	Die Leder werden umweltfreundlich, ohne Einsatz von AZO-Farbstoffen, gemäß der Verbotsverordnung, hergestellt. / The leathers are being produced ecologically safe, according to laws and regulations, without AZO colours.
Brandverhalten / Inflammability	Bewertung der Entzündbarkeit nach DIN EN 1021-1 EUFAC-Richtlinie (europ. Polstermöbelverband) / According to DIN EN 1021-1 EUFAC (upholstery furniture union)
Lichtbeständigkeit / light constancy	≥ 3 (EN ISO 105 – B02)
Reibechtheit / rubbing fastness	≥ 3 trocken / dry: 50 EN ISO 11640 (schwarz / black ≥ 2) ≥ 3 nass / wet: 20 EN ISO 11640 (schwarz / black ≥ 2) ≥ 3 alkalisch / alcalic: 20 EN ISO 11640 (schwarz / black ≥ 2)
Pflege / care	Das Leder Verona zeigt nach einer gewissen Zeit eine Patina. Um an diesen Stellen wieder einen feinen Schliff zu erreichen, ist zu empfehlen, diese mit einer festen Bürste oder einem Nubuk-Reinigungstuch zu behandeln. Zur Pflege können wir Ihnen unseren LR-Edition Intensivreiniger empfehlen. After a certain period of time, the leather Verona shows a patina. In order to renew the surface we recommend to apply a solid brush or a nubuck cleaning cloth. For the care we can recommend you our product LR-Edition intensive cleaner.

Weitere Informationen erhalten Sie unter [www.leder-reinhardt.de](http://www.leder-reinhardt.de)