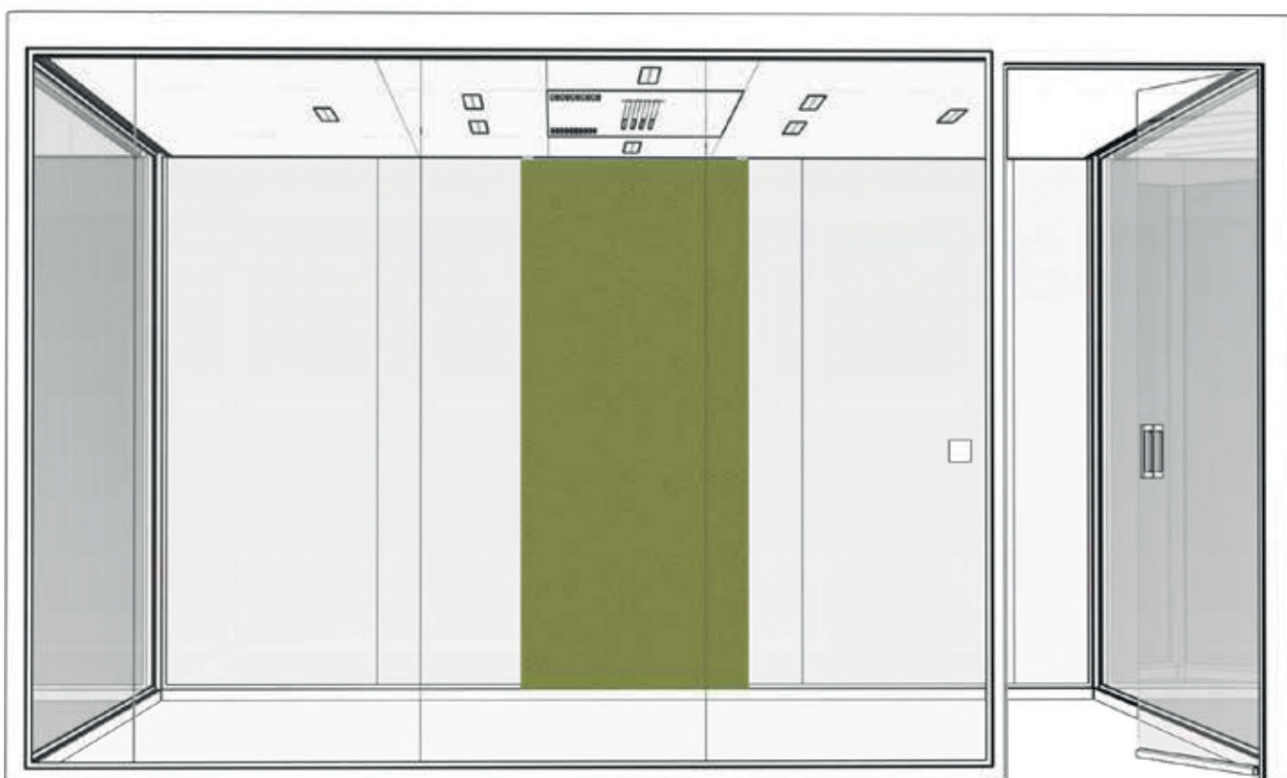


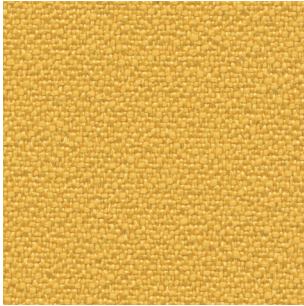
Bosse

made in Germany

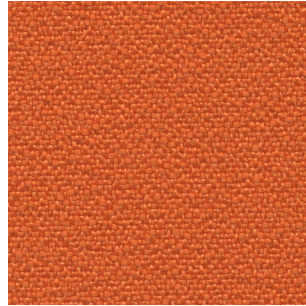


HUMAN SPACE POLO STOFF | POLO FABRIC | POLO MATIÈRE

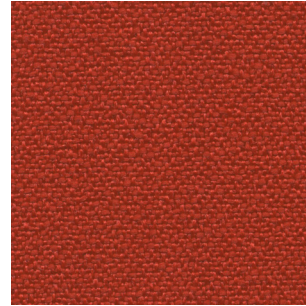
POLO STOFF | POLO FABRIC | POLO MATIÈRE



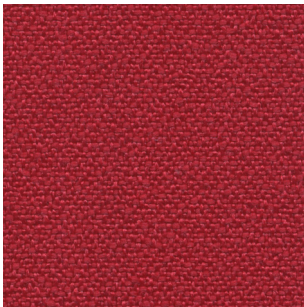
77.03 (4650) *
Honiggelb | Honey yellow



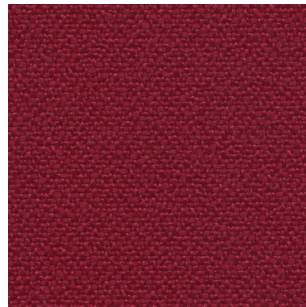
77.44 (4613)
Orange | Orange



77.45 (4612)
Kupferrot | Pure copper



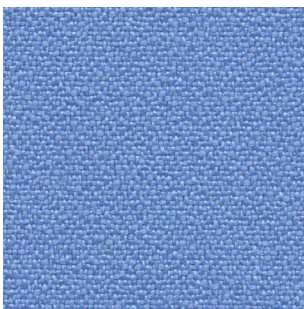
77.40 (4610) *
Chiliret | Chilired



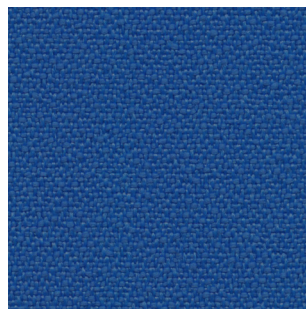
77.42 (4614)
Rubinrot | Rubin red



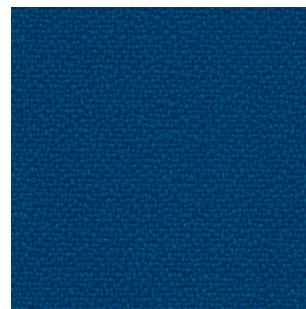
77.48 (4611)
Shirazrot | Shiraz red



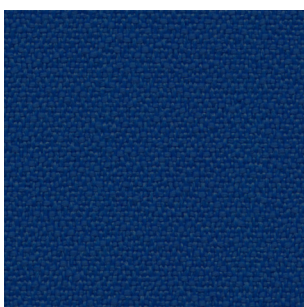
77.25 (4625)
Wasserblau | Lagoon blue



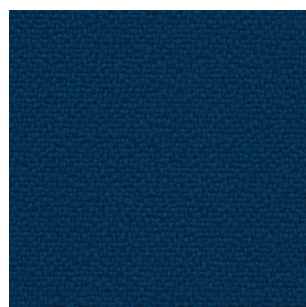
77.26 (4624)
Purpur | Purple



77.20 (4621)
Standardblau | Classic blue

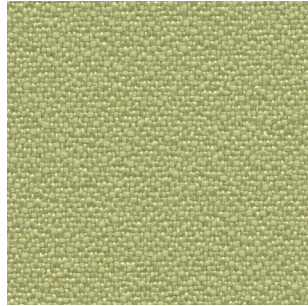


77.27 (4626)
Königsblau | Royal blue

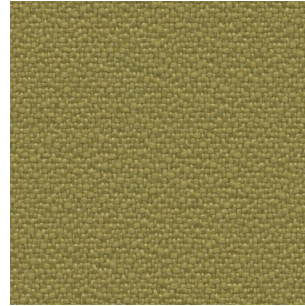


77.29 (4620)
Nachtblau | Midnight blue

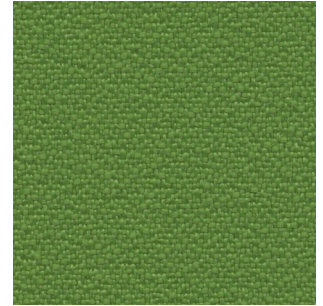
POLO STOFF | POLO FABRIC | POLO MATIÈRE



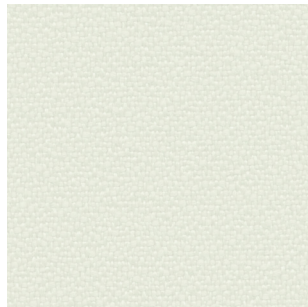
77.11 (4633)
Hellgrün | Vividgreen



77.12 (4632)
Irischgrün | Irish green



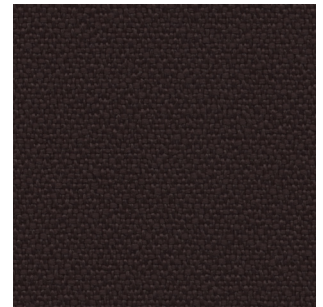
77.10 (4631)
Grün | Organic green



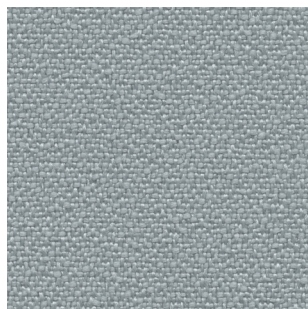
77.72 (4642)
Kaschmirweiß | Cashmere



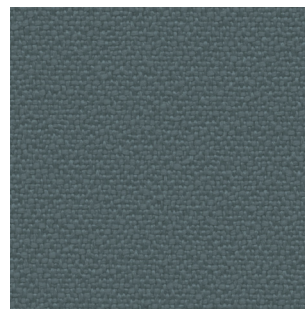
77.50 (4641)
Cappuccino | Cappuccino



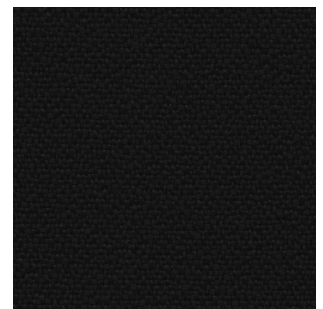
77.60 (4640)
Schokobraun | Chocolate



77.31 (4602)
Platingrau | Platin



77.30 (4601)
Grau | Metal grey



77.33 (4600)
Schwarz | Midnight black

POLO STOFF | POLO FABRIC | POLO MATIÈRES

Farbabweichungen, Irrtum sowie Änderungen vorbehalten. | Differences in colour, errors and modifications excepted. | Sous réserve de variations de couleurs, d'erreurs et de modifications

Zusammensetzung: 100 % Polyester
Gewicht: ca. 350 g/m
Breite: 140 cm
Lichtechtheit: Note 6 (DIN EN ISO 105-B02)
Reibechtheit: nass Note 4-5
trocken Note 4-5
Scheuerfestigkeit: 150.000 Touren (Martindale; DIN EN ISO 12947)
Brandverhalten: DIN EN 1021: Teil 1/2

Composition: 100 % Polyester
Weight: approx. 350 g/m
Width: 140 cm
Light fastness: value 6 (DIN EN ISO 105-B02)
Fastness to rubbing: wet value 4-5
dry value 4-5
Abrasion resistance: 150.000 rubs (Martindale; DIN EN ISO 12947)
Flammability: DIN EN 1021: Part 1/2

Composition: 100 % Polyester
Poids: env. 350 g/m
Largeur: 140 cm
Résistance à la lumière: note 6 (DIN EN ISO 105-B02)
Solidité au frottement: humide note 4-5
sec note 4-5
Résistance à l'abrasion: 150.000 frottements (Martindale; DIN EN ISO 12947)
Niveau d'inflammabilité: DIN EN 1021: partie 1/2

Bosse Design Gesellschaft für
Innovative Office Interiors
mbH & Co. KG
Stahler Ufer 7
37671 Höxter/Stahle, Germany
+49 5531 1297-0
info@bosse.de
www.bosse.de

Dauphin HumanDesign®
Group GmbH & Co. KG
Espanstraße 36
91238 Offenhausen, Germany
+49 9158 17-700
info@dauphin-group.com
www.dauphin-group.com

Bosse