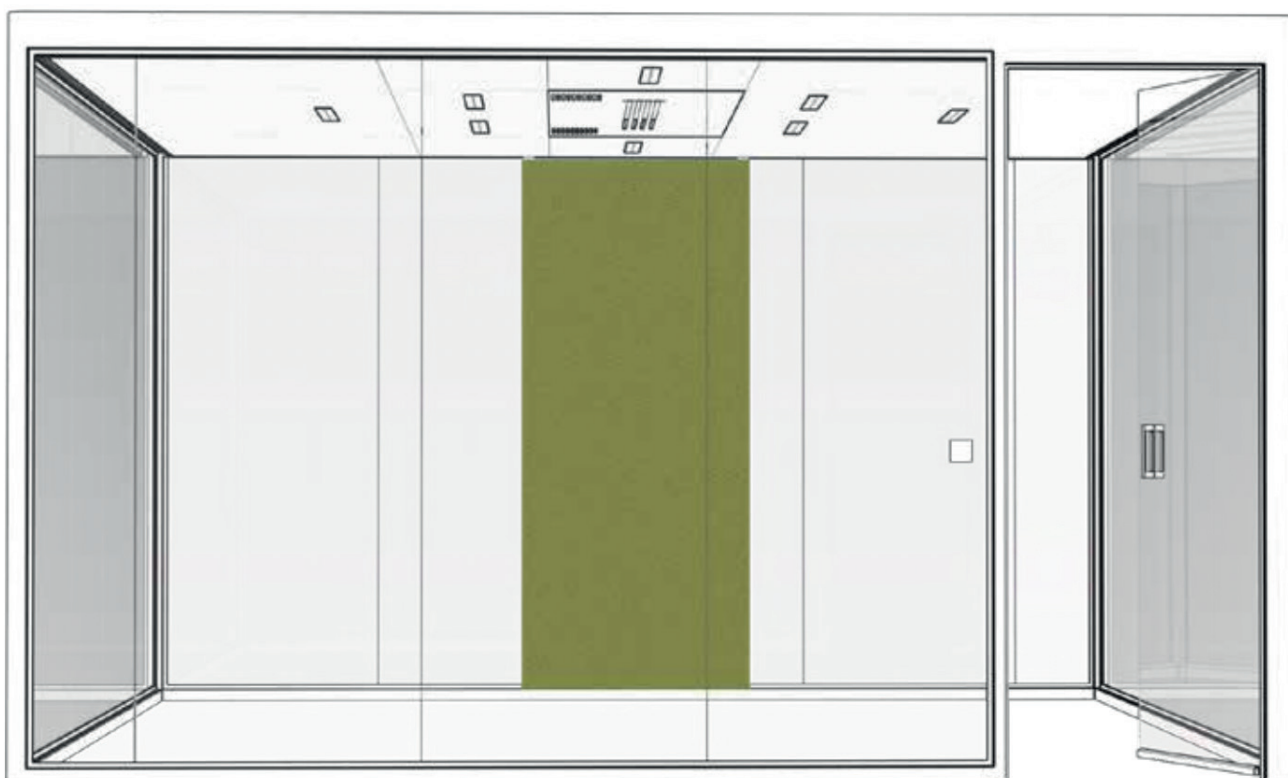


Bosse

made in Germany



HUMAN SPACE DIVINA STOFF | DIVINA FABRIC | DIVINA MATIÈRE

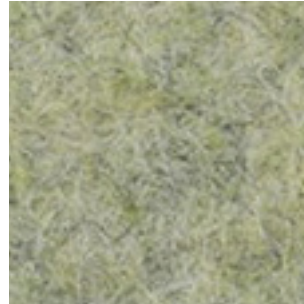
DIVINA STOFF | DIVINA FABRIC | DIVINA MATIÈRE



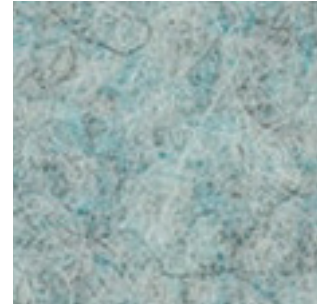
3231
Platingrau | Platin



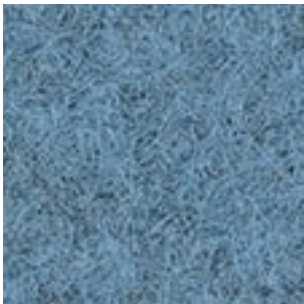
3250
Cappuccino | Cappuccino



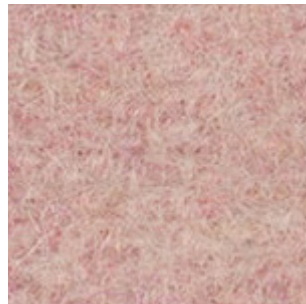
3210
Grün | Organic green



3223
Türkis | Caribbean blue



3219
Indigo Blau | Indigo blue



3246
Pink | Pink orchid



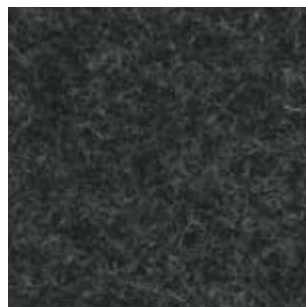
3204
Currygelb | Curry yellow



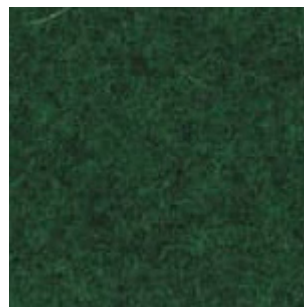
3262
Pfefferbraun | Brown pepper



3236
Anthrazitgrau | Asphalt grey



3233
Schwarz | Midnight black



3212
Irischgrün | Irish green



3225
Wasserblau | Lagoon blue

DIVINA STOFF | DIVINA FABRIC | DIVINA MATIÈRE

Farbabweichungen, Irrtum sowie Änderungen vorbehalten. | Differences in colour, errors and modifications excepted. | Sous réserve de variations de couleurs, d'erreurs et de modifications

Zusammensetzung: 100 % Schurwolle, Kammgarn
Gewicht: ca. 820 g/m
Breite: 150 cm
Lichtechtheit: Note 6-7 (DIN EN ISO 105-B02)
Reibechtheit: nass Note 3-5
trocken Note 4-5
Scheuerfestigkeit: 45.000 Touren (Martindale; DIN EN ISO 12947)
Brandverhalten: DIN EN 1021: Teil 1/2

Composition: 100 % Wool, worsted
Weight: approx. 820 g/m
Width: 150 cm
Light fastness: value 6-7 (DIN EN ISO 105-B02)
Fastness to rubbing: wet value 3-5
dry value 4-5
Abrasion resistance: 45.000 rubs (Martindale; DIN EN ISO 12947)
Flammability: DIN EN 1021: Part 1/2

Composition: 100 % Laine Vierge, Laine Peignée
Poids: env. 820 g/m
Largeur: 150 cm
Résistance à la lumière: note 6-7 (DIN EN ISO 105-B02)
Solidité au frottement: humide note 3-5
sec note 4-5
Résistance à l'abrasion: 45.000 frottements (Martindale; DIN EN ISO 12947)
Niveau d'inflammabilité: DIN EN 1021: partie 1/2

Bosse Design Gesellschaft für
Innovative Office Interiors
mbH & Co. KG
Stahler Ufer 7
37671 Höxter/Stahle, Germany
+49 5531 1297-0
info@bosse.de
www.bosse.de

Dauphin HumanDesign®
Group GmbH & Co. KG
Espanstraße 36
91238 Offenhausen, Germany
+49 9158 17-700
info@dauphin-group.com
www.dauphin-group.com

Bosse